

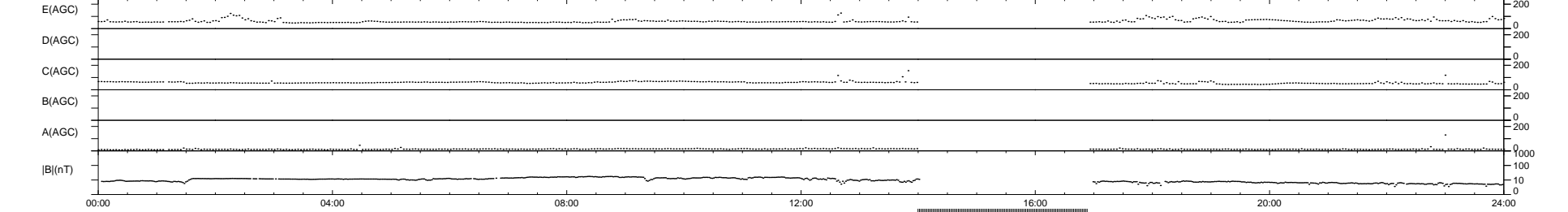
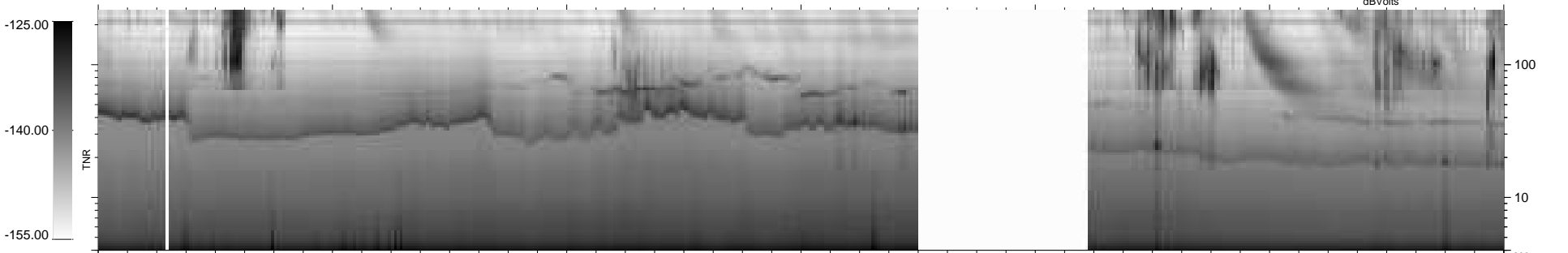
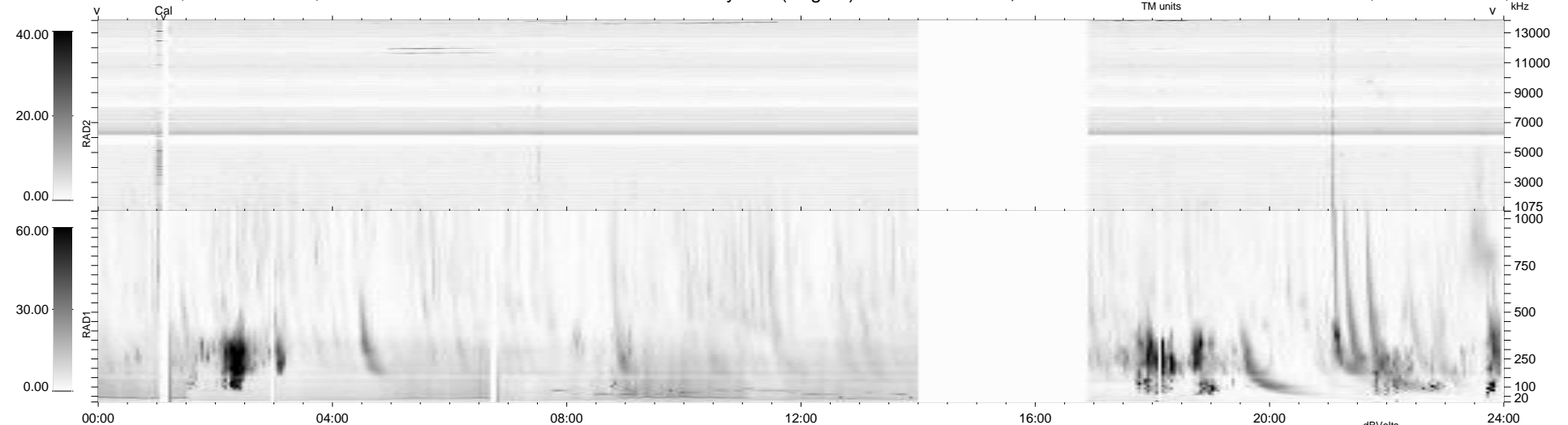
12 bad + 813 good MF/939MF projected (86%) - 114 missing MFs
 Avg interval = 180 secs
 Re = - 231.49 (210.85, 95.40, -5.45 GSE)

windlib 2.0b

LZ version = v01

WIND/WAVES Summary Plot (Page 1) for 01-MAR-2013, DOY = 60

DAILY 2013-03-02 23:46:07
 Re = 232.83 (212.01, 96.13, -4.77 GSE)



RAD2
 Antenna Ey
 Mode LIN(1)
 SUM/SEP SEP
 Toggle OFF

RAD1
 Antenna Ex
 Mode LIS(2,4)
 SUM/SEP SUM
 Toggle OFF

TNR
 Antenna ExEy
 Mode A-32
 Sweep ACE