

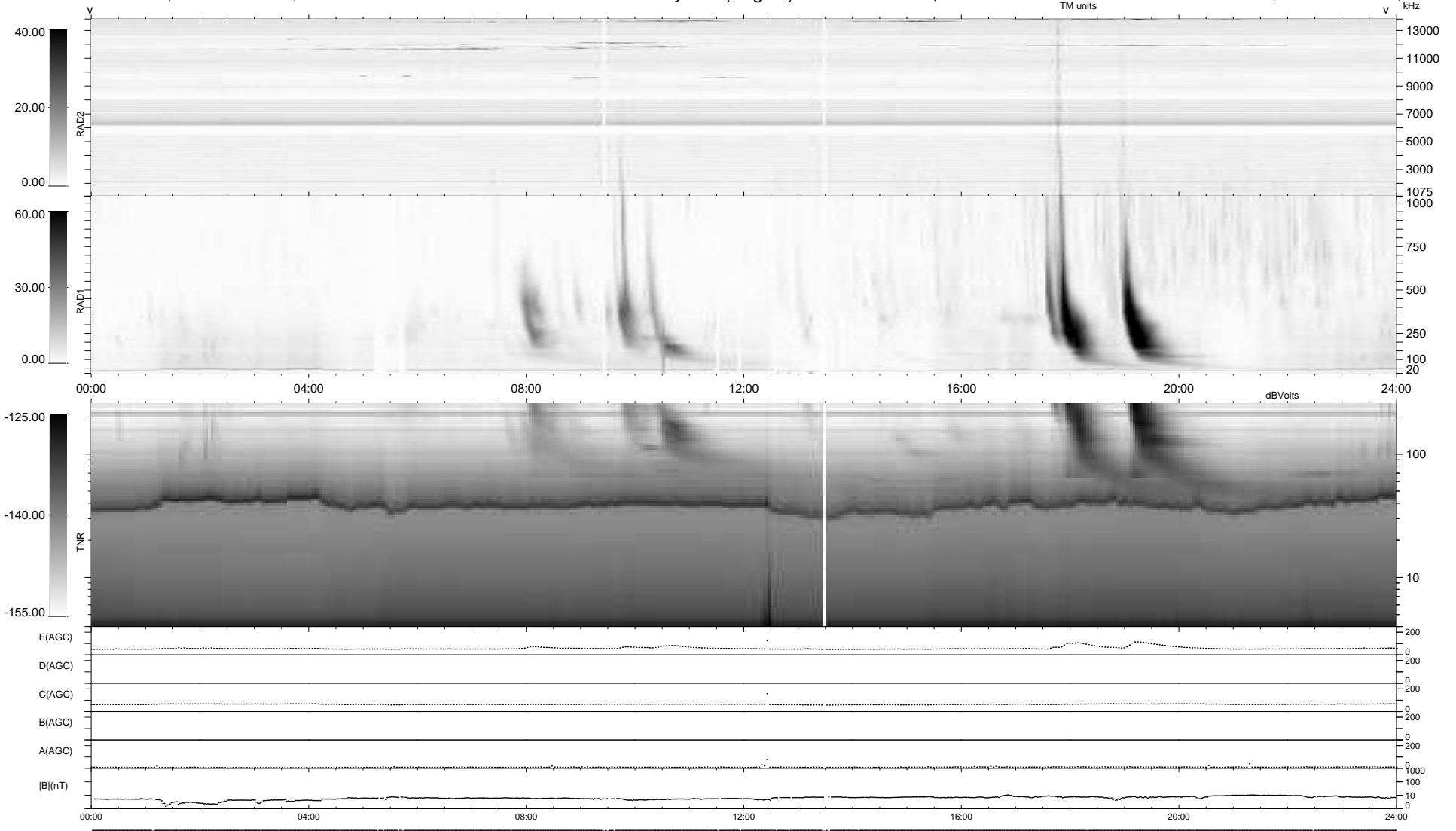
23 bad + 916 good MF/939MF projected (97%) - 0 missing MFs
 Avg interval = 180 secs
 Re = 230.15 (209.74, 94.56, -6.13 GSE)

windlib 2.0b

LZ version = v01

WIND/WAVES Summary Plot (Page 1) for 28-FEB-2013, DOY = 59

DAILY 2013-03-01 09:46:07
 Re = 231.48 (210.84, 95.39, -5.46 GSE)



```

RAD2
Antenna Ey .....
Mode LIN(1) .....
SUM/SEP SEP .....
Toggle OFF .....

RAD1
Antenna Ex .....
Mode LIS(2,4) .....
SUM/SEP SUM .....
Toggle OFF .....

TNR
Antenna ExEy .....
Mode A-32 .....
Sweep ACE .....
  
```