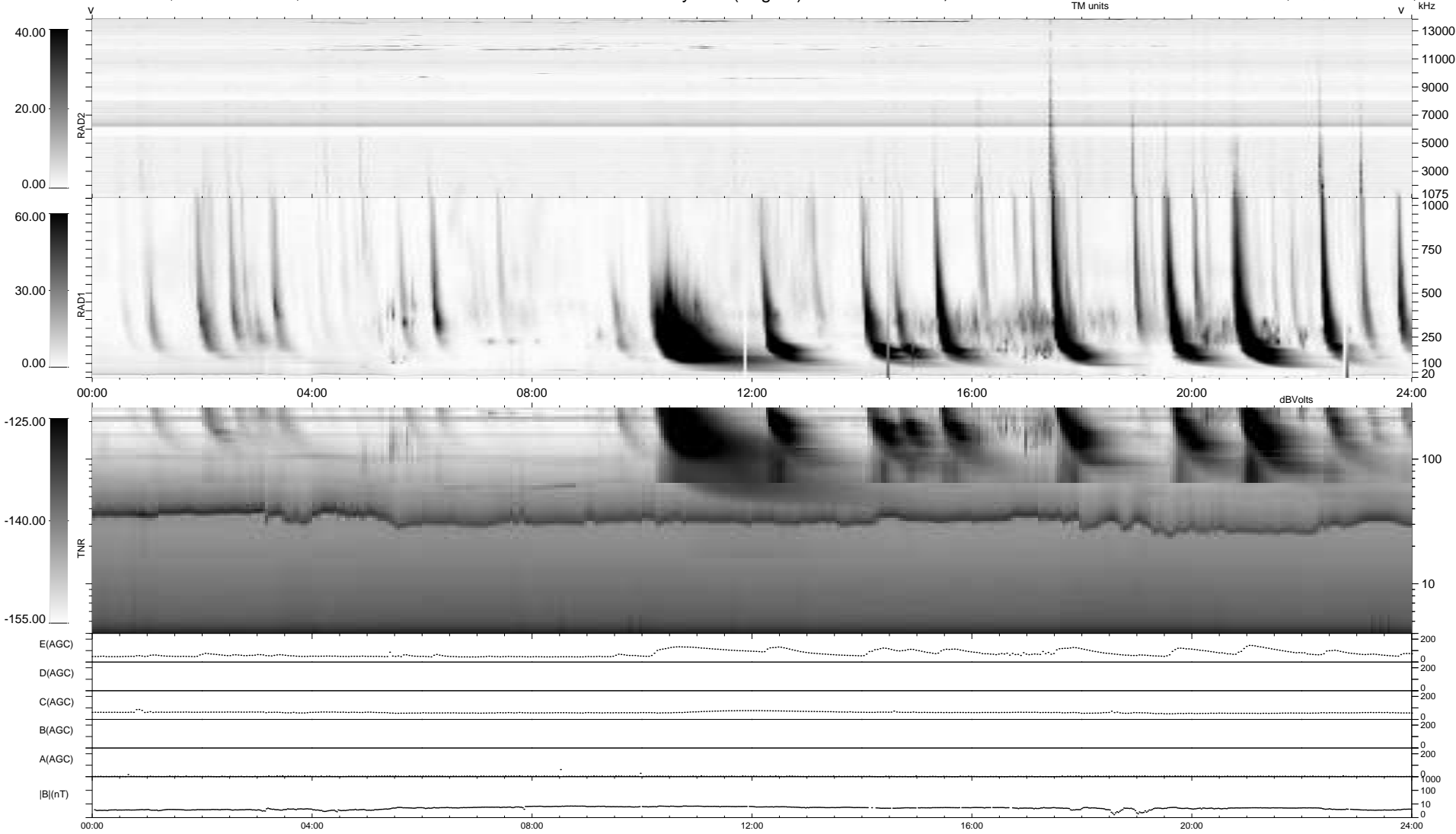


14 bad + 926 good MF/940MF projected (98%) - 0 missing MFs  
 Avg interval = 180 secs  
 Re = 227.52 (207.71, 92.55, -7.45 GSE)

windlib 2.0b LZ version = v01  
 DAILY 2013-02-27 22:46:09  
 Re = 228.82 (208.69, 93.60, -6.80 GSE)

### WIND/WAVES Summary Plot (Page 1) for 26-FEB-2013, DOY = 57



```

RAD2
Antenna Ey .....
Mode LIN(1) .....
SUM/SEP SEP .....
Toggle OFF .....

RAD1
Antenna Ex .....
Mode LIS(2,4) .....
SUM/SEP SUM .....
Toggle OFF .....

TNR
Antenna ExEy .....
Mode A-32 .....
Sweep ACE .....
  
```