

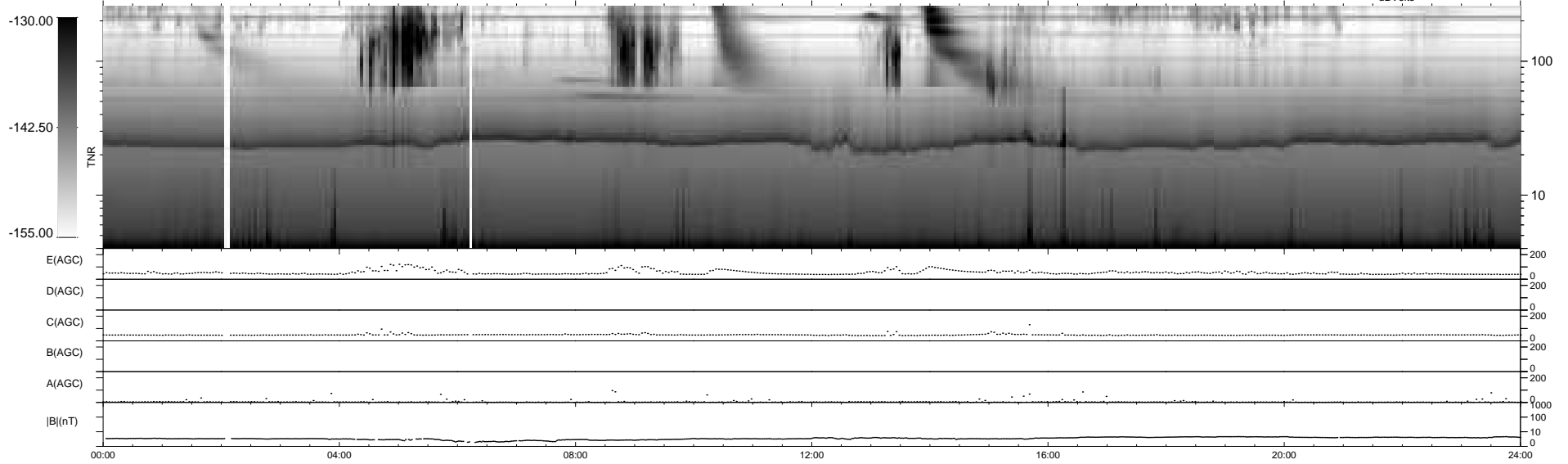
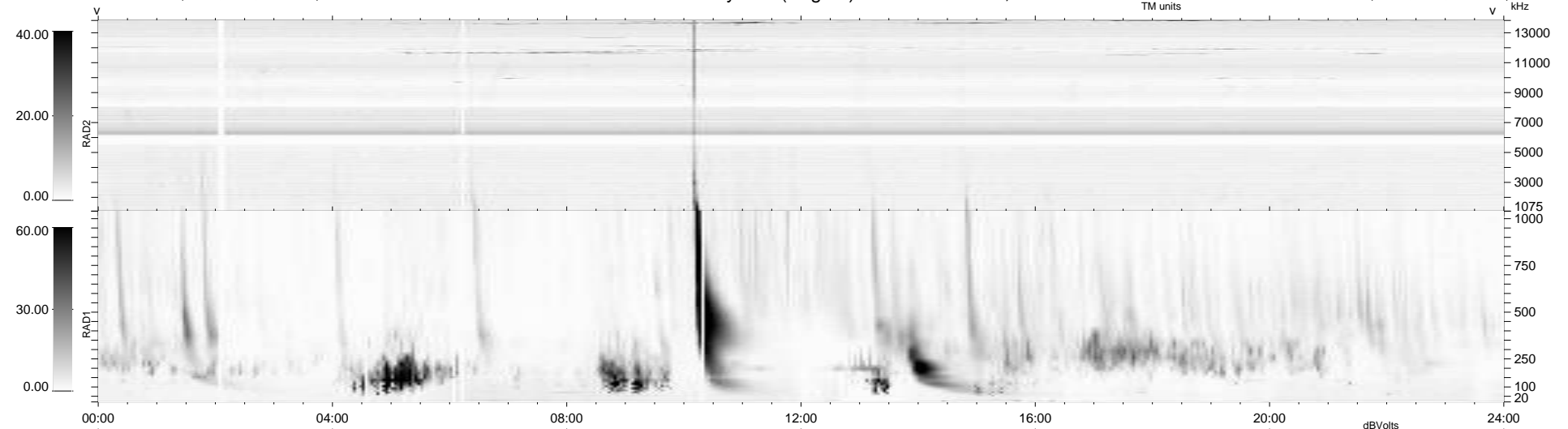
20 bad + 919 good MF/939MF projected (97%) - 0 missing MFs  
 Avg interval = 180 secs  
 Re = -224.94 (205.94, 90.05, -8.72 GSE)

windlib 2.0b

LZ version = v01

### WIND/WAVES Summary Plot (Page 1) for 24-FEB-2013, DOY = 55

DAILY 2013-02-25 10:46:07  
 Re = 226.22 (206.79, 91.35, -8.10 GSE)



RAD2  
 Antenna Ey  
 Mode LIN(1)  
 SUM/SEP SEP  
 Toggle OFF

RAD1  
 Antenna Ex  
 Mode LIS(2,4)  
 SUM/SEP SUM  
 Toggle OFF

TNR  
 Antenna ExEy  
 Mode A-32  
 Sweep ACE