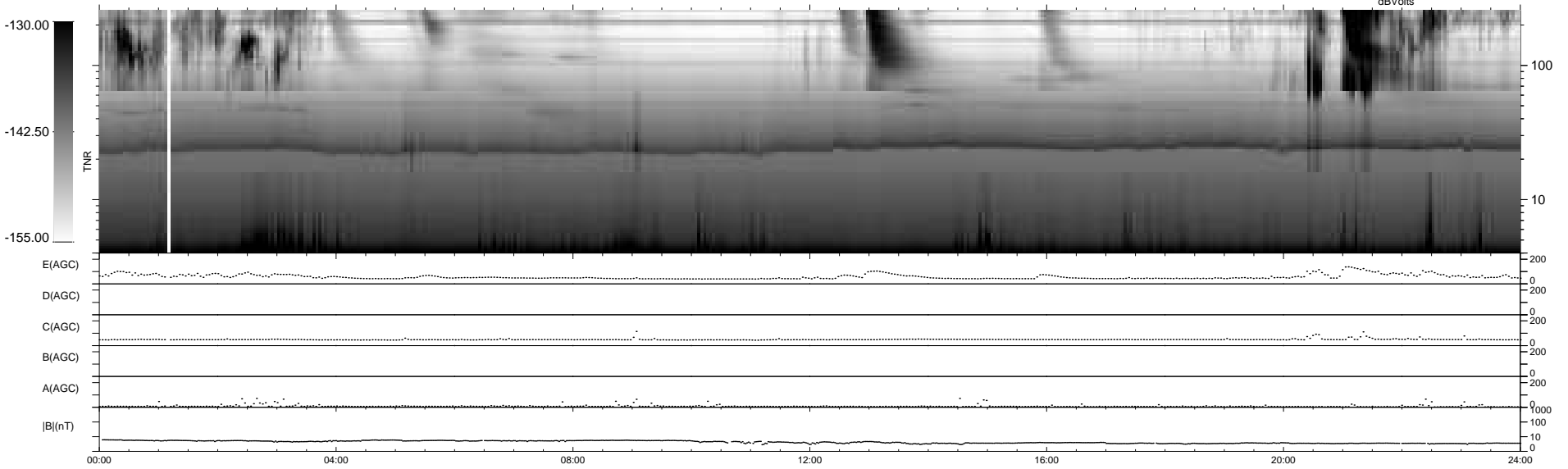
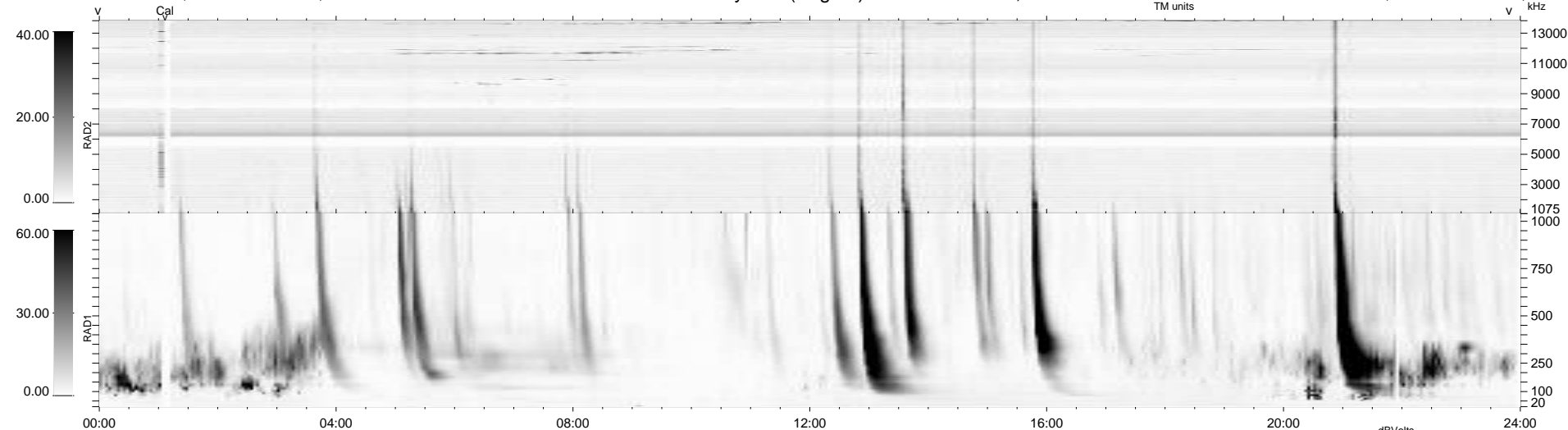


7 bad + 932 good MF/939MF projected (99%) - 0 missing MFs
 Avg interval = 180 secs
 Re = 223.67 (205.15, 88.61, -9.34 GSE)

windlib 2.0b LZ version = v01
 DAILY 2013-02-24 18:46:07
 Re = 224.93 (205.94, 90.04, -8.73 GSE)

WIND/WAVES Summary Plot (Page 1) for 23-FEB-2013, DOY = 54



RAD2
 Antenna Ey
 Mode LIN(1)
 SUM/SEP SEP
 Toggle OFF
 RAD1
 Antenna Ex
 Mode LIS(2,4)
 SUM/SEP SUM
 Toggle OFF
 TNR
 Antenna ExEy
 Mode A-32
 Sweep ACE