

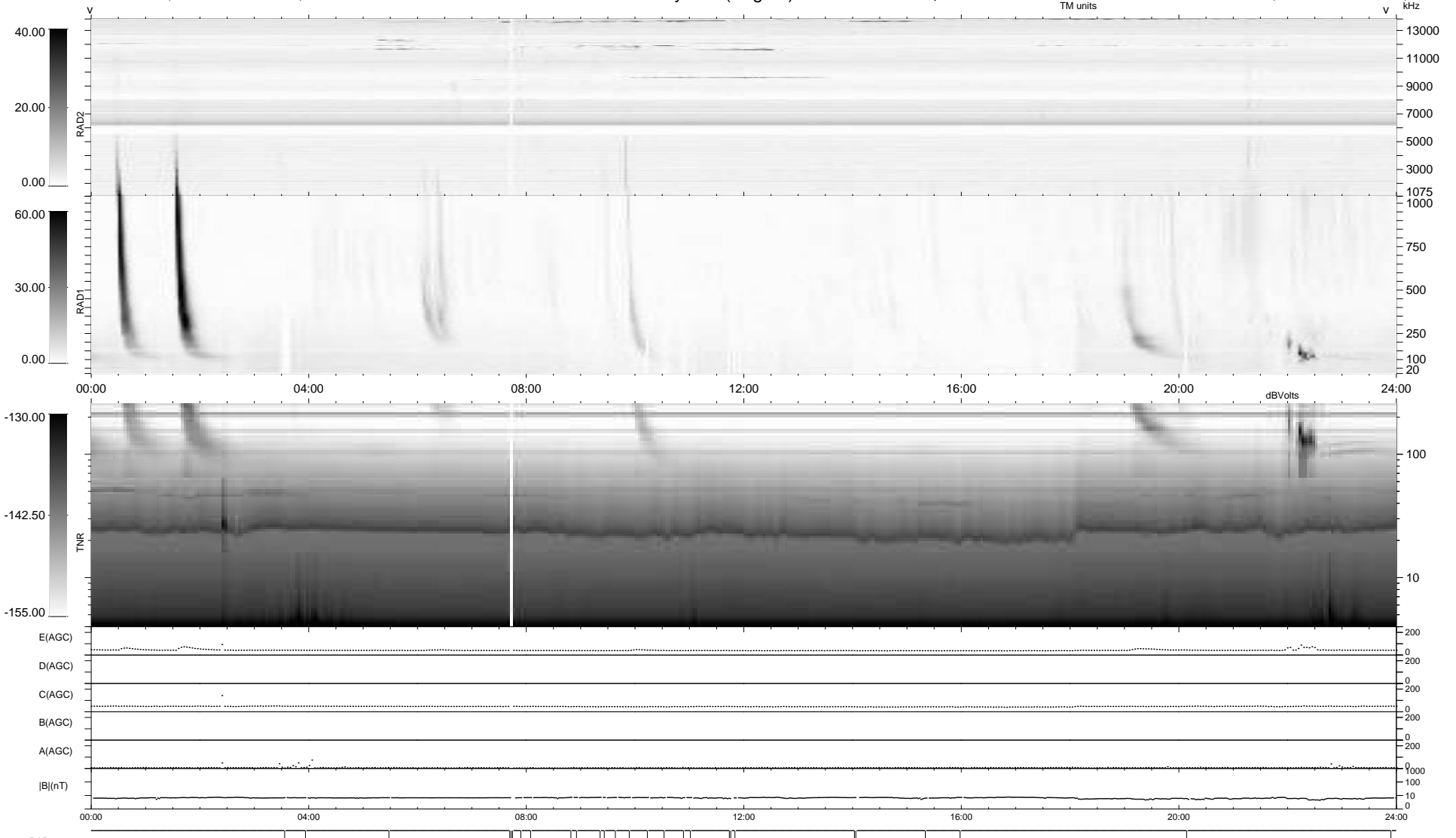
27 bad + 912 good MF/939MF projected (97%) - 0 missing MFs  
 Avg interval = 180 secs  
 Re = 217.37 (202.03, 79.30, -12.16 GSE)

windlib 2.0b

LZ version = v01

### WIND/WAVES Summary Plot (Page 1) for 18-FEB-2013, DOY = 49

DAILY 2013-02-19 19:46:06  
 Re = 218.62 (202.56, 81.43, -11.64 GSE)



```

RAD2
Antenna Ey .....
Mode LIN(1) .....
SUM/SEP SEP .....
Toggle OFF .....

RAD1
Antenna Ex .....
Mode LIS(2,4) .....
SUM/SEP SUM .....
Toggle OFF .....

TNR
Antenna ExEy .....
Mode A-32 .....
Sweep ACE .....
  
```