

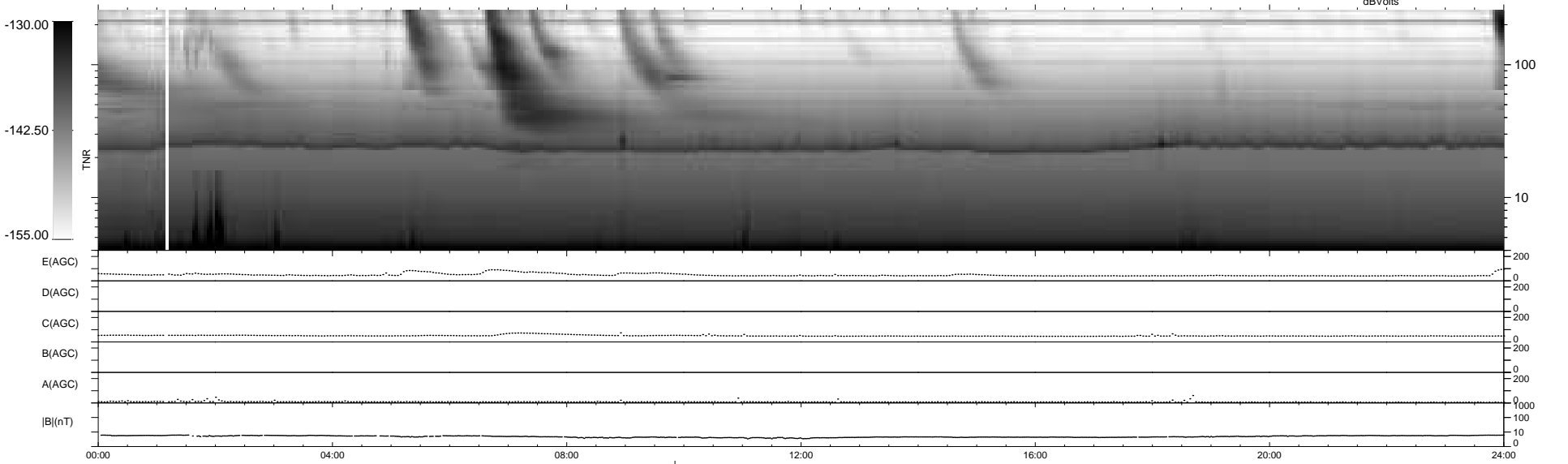
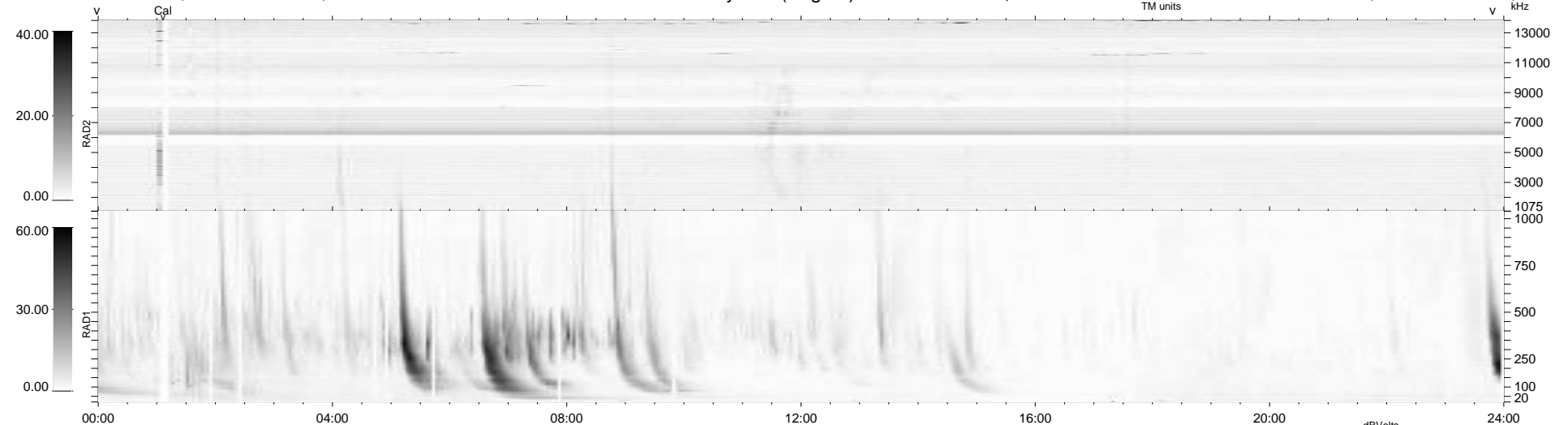
23 bad + 915 good MF/939MF projected (97%) - 1 missing MF
 Avg interval = 180 secs
 Re = 206.12 (198.22, 54.19, -16.07 GSE)

windlib 2.0b

LZ version = v01

WIND/WAVES Summary Plot (Page 1) for 09-FEB-2013, DOY = 40

DAILY 2013-02-10 23:46:07
 Re = 207.34 (198.62, 57.39, -15.72 GSE)



RAD2
 Antenna Ey
 Mode LIN(1)
 SUM/SEP SEP
 Toggle OFF

RAD1
 Antenna Ex
 Mode LIS(2,4)
 SUM/SEP SUM
 Toggle OFF

TNR
 Antenna ExEy
 Mode A-32
 Sweep ACE