

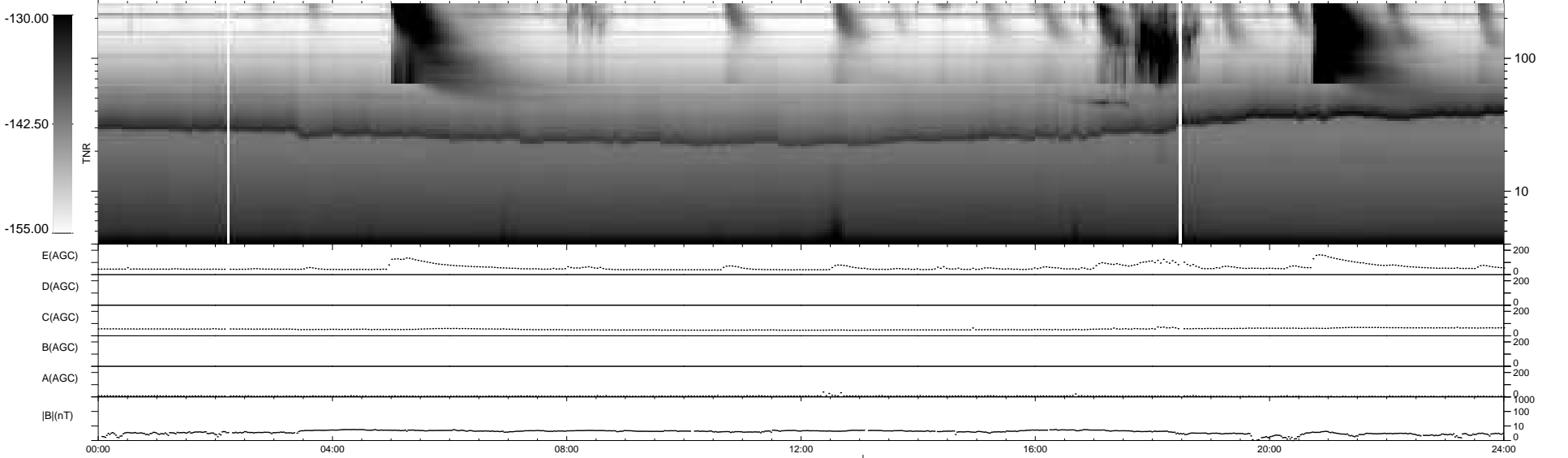
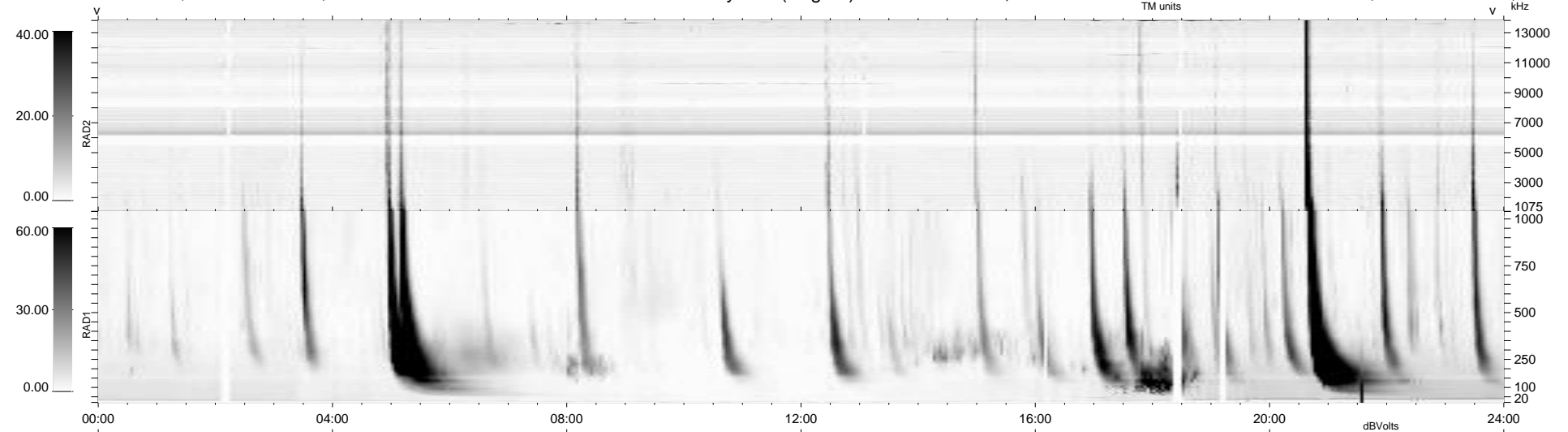
25 bad + 913 good MF/939MF projected (97%) - 1 missing MF
 Avg interval = 180 secs
 Re = 200.54 (196.28, 37.18, -17.45 GSE)

windlib 2.0b

LZ version = v02

WIND/WAVES Summary Plot (Page 1) for 04-FEB-2013, DOY = 35

DAILY 2013-02-06 10:46:09
 Re = 201.57 (196.67, 40.64, -17.23 GSE)



RAD2
 Antenna Ey
 Mode LIN(1)
 SUM/SEP SEP
 Toggle OFF

RAD1
 Antenna Ex
 Mode LIS(2,4)
 SUM/SEP SUM
 Toggle OFF

TNR
 Antenna ExEy
 Mode A-32
 Sweep ACE