

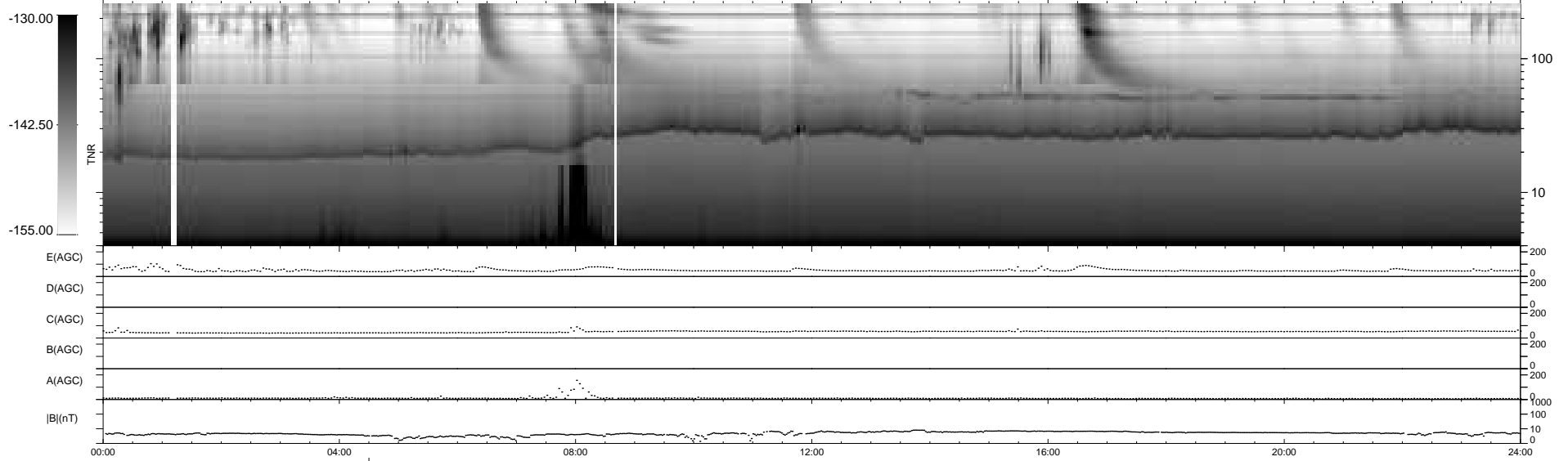
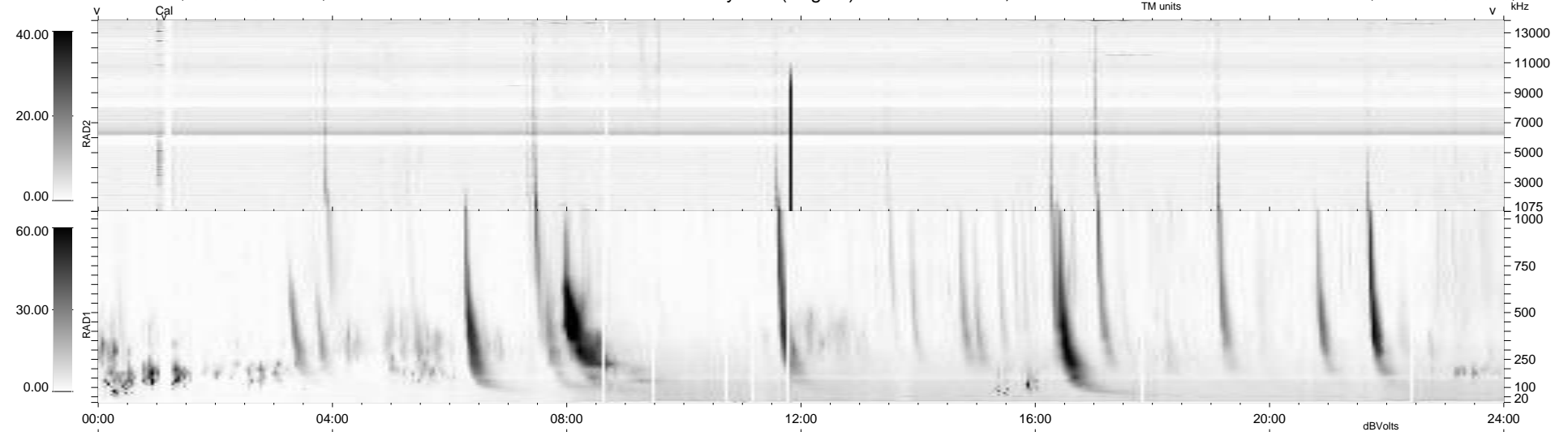
17 bad + 922 good MF/940MF projected (98%) - 1 missing MF
 Avg interval = 180 secs
 Re = 199.57 (195.91, 33.68, -17.64 GSE)

windlib 2.0b

LZ version = v01

WIND/WAVES Summary Plot (Page 1) for 03-FEB-2013, DOY = 34

DAILY 2013-02-04 06:46:08
 Re = 200.53 (196.28, 37.16, -17.45 GSE)



```

RAD2
Antenna Ey .....
Mode LIN(1) .....
SUM/SEP SEP .....
Toggle OFF .....

RAD1
Antenna Ex .....
Mode LIS(2,4) .....
SUM/SEP SUM .....
Toggle OFF .....

TNR
Antenna ExEy .....
Mode A-32 .....
Sweep ACE .....
  
```