

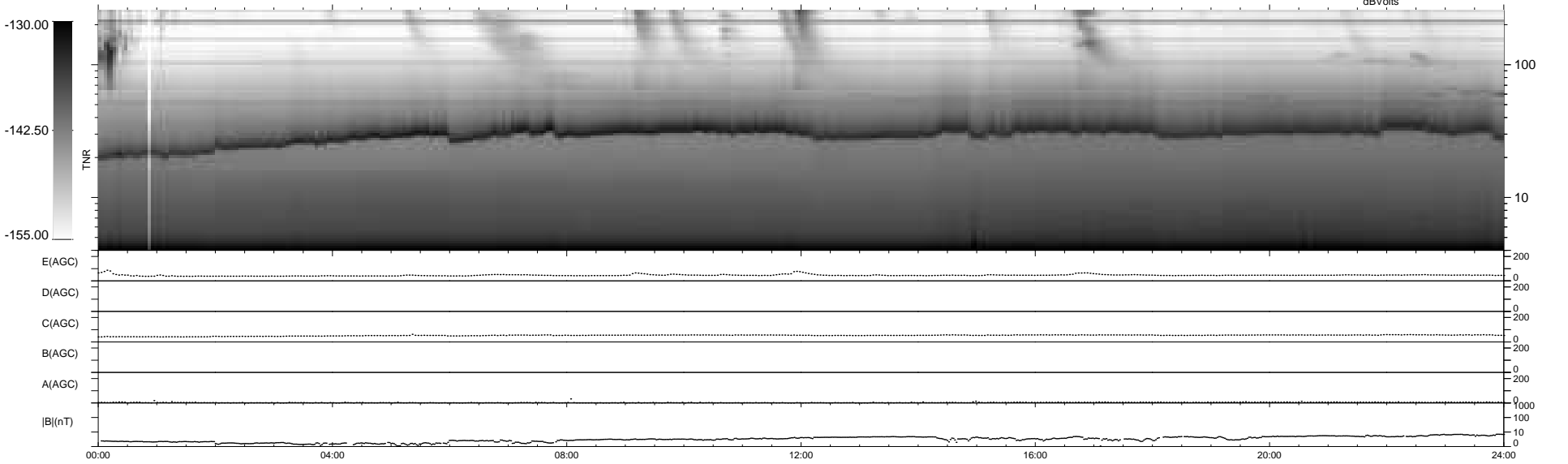
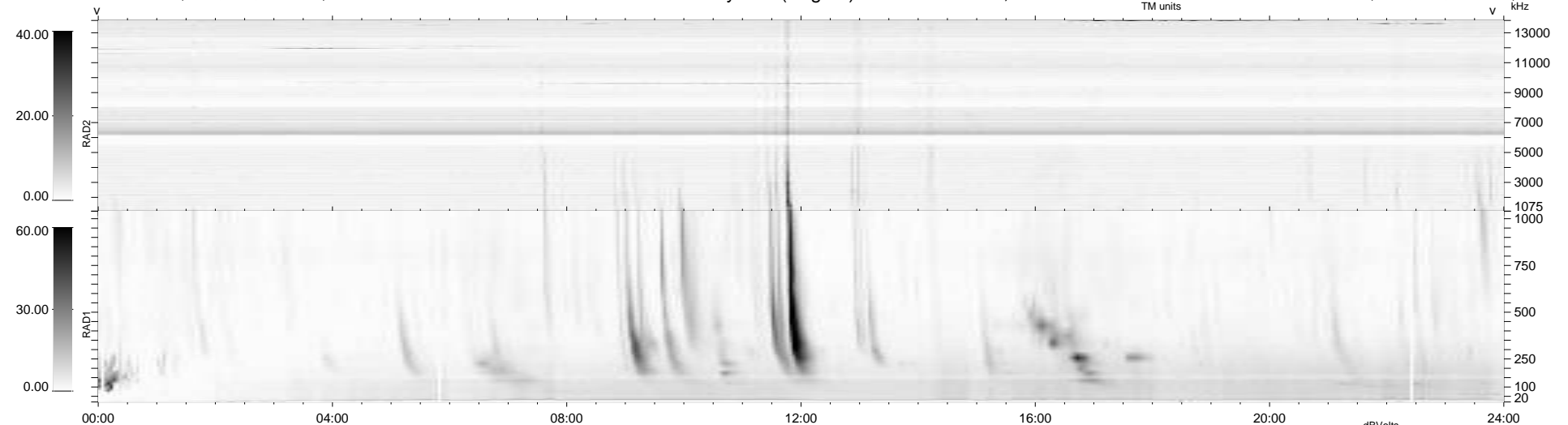
17 bad + 922 good MF/939MF projected (98%) - 0 missing MFs  
 Avg interval = 180 secs  
 Re = 197.17 (194.99, 23.04, -18.01 GSE)

windlib 2.0b

LZ version = v02

### WIND/WAVES Summary Plot (Page 1) for 31-JAN-2013, DOY = 31

DAILY 2013-02-04 13:46:07  
 Re = 197.87 (195.26, 26.58, -17.92 GSE)



RAD2  
 Antenna Ey .....  
 Mode LIN(1) .....  
 SUM/SEP SEP .....  
 Toggle OFF .....  
 RAD1  
 Antenna Ex .....  
 Mode LIS(2,4) .....  
 SUM/SEP SUM .....  
 Toggle OFF .....  
 TNR  
 Antenna ExEy .....  
 Mode A-32 .....  
 Sweep ACE .....