

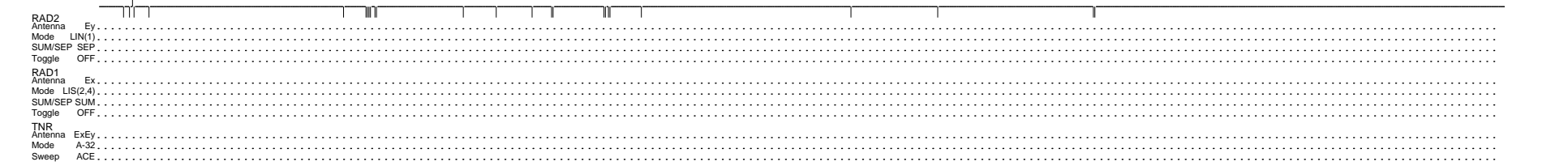
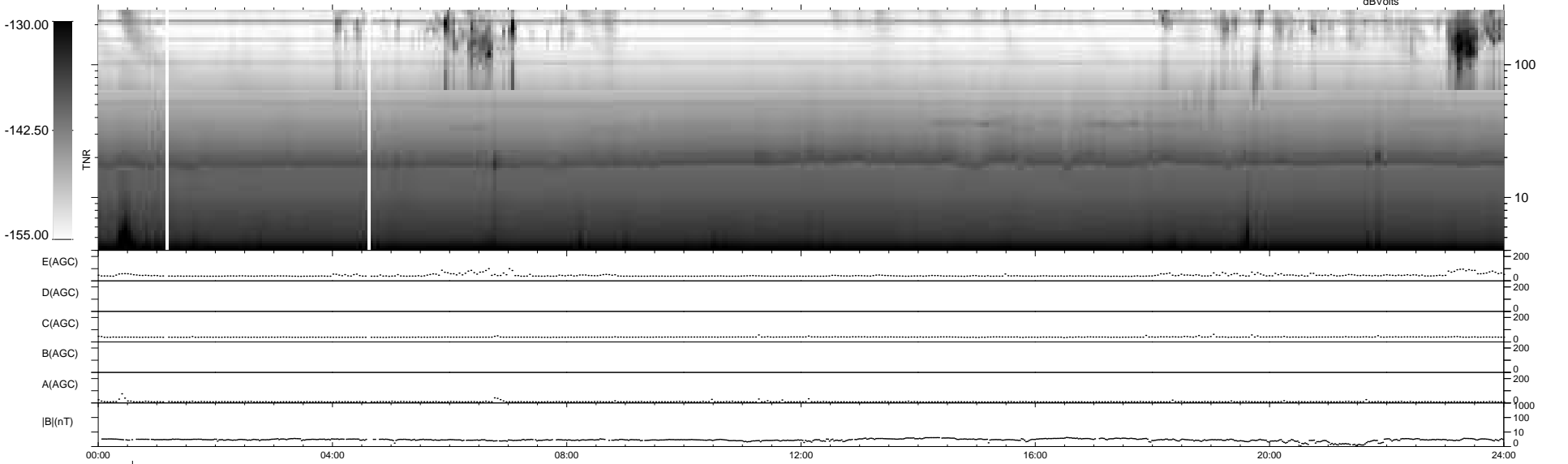
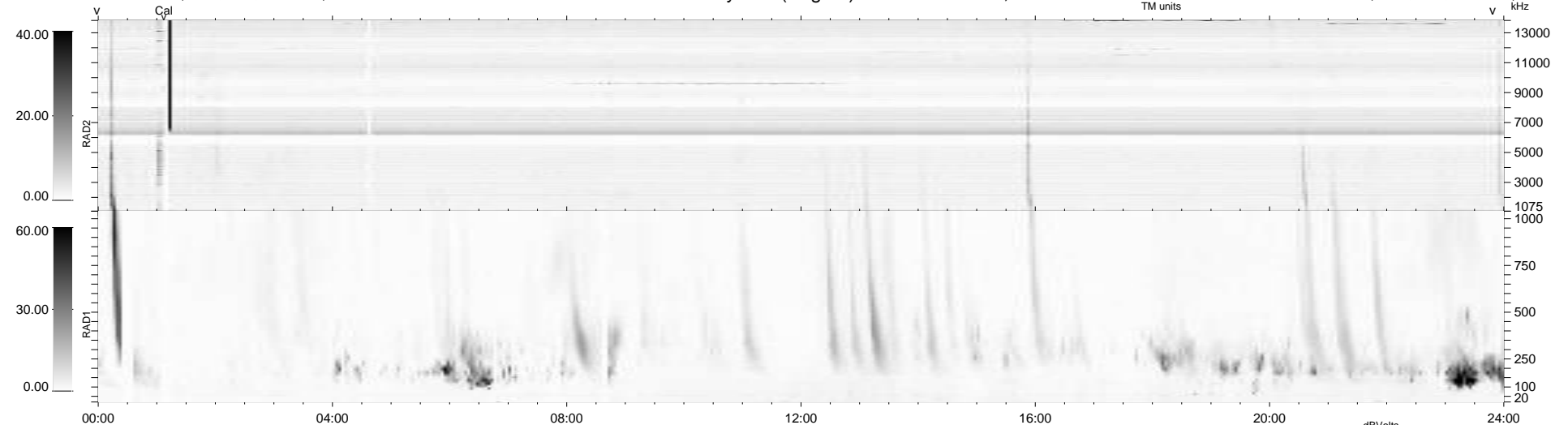
25 bad + 913 good MF/939MF projected (97%) - 1 missing MF
 Avg interval = 180 secs
 Re = 195.68 (194.45, 12.27, -18.06 GSE)

windlib 2.0b

LZ version = v02

WIND/WAVES Summary Plot (Page 1) for 28-JAN-2013, DOY = 28

DAILY 2013-01-30 10:47:07
 Re = 196.07 (194.59, 15.85, -18.08 GSE)



RAD2
 Antenna Ey
 Mode LIN(1)
 SUM/SEP SEP
 Toggle OFF

RAD1
 Antenna Ex
 Mode LIS(2,4)
 SUM/SEP SUM
 Toggle OFF

TNR
 Antenna ExEy
 Mode A-32
 Sweep ACE