

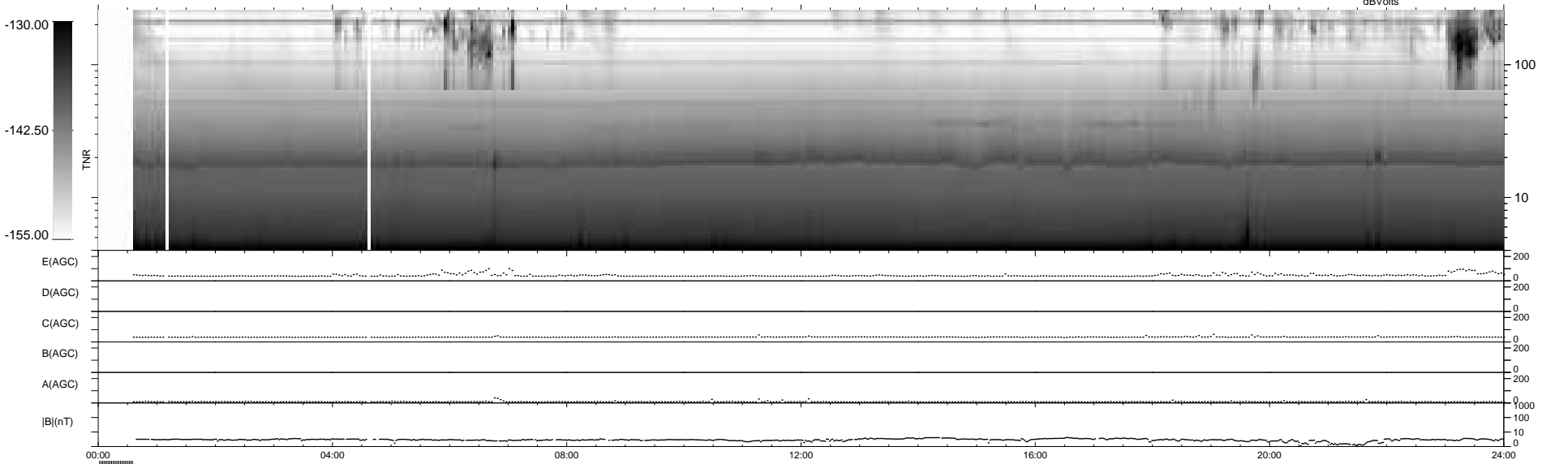
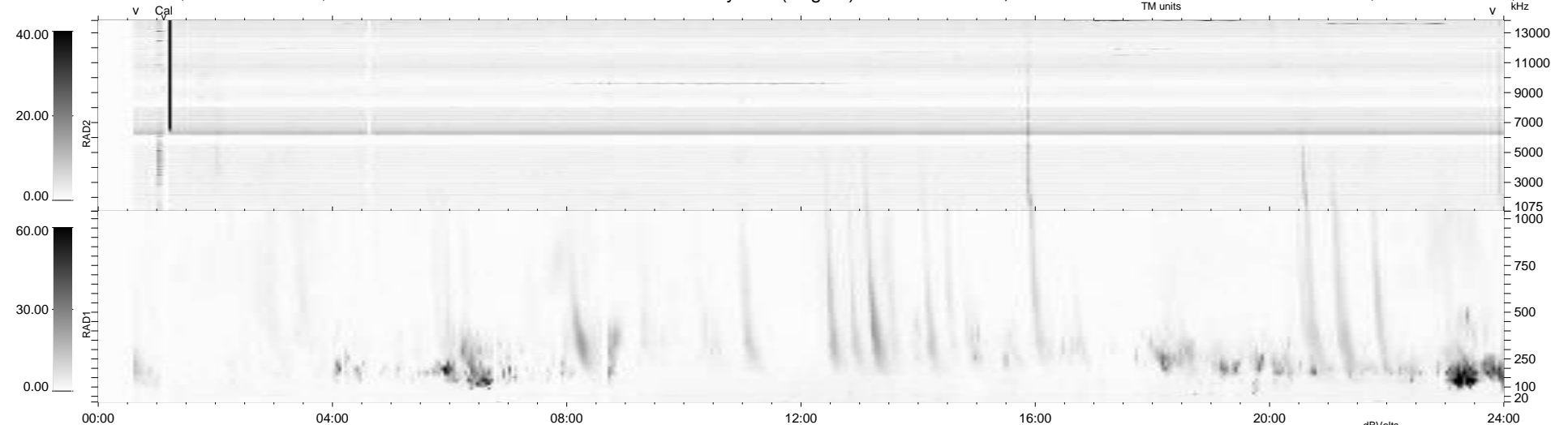
23 bad + 893 good MF/939MF projected (95%) - 23 missing MFs  
Avg interval = 180 secs  
Re = 195.68 (194.46, 12.37, -18.06 GSE)

windlib 2.0b

LZ version = v01

### WIND/WAVES Summary Plot (Page 1) for 28-JAN-2013, DOY = 28

DAILY 2013-01-30 03:46:08  
Re = 196.07 (194.59, 15.85, -18.08 GSE)



RAD2 Antenna Mode SUM/SEP Toggle  
RAD1 Antenna Mode SUM/SEP Toggle  
TNR Antenna Mode Sweep