

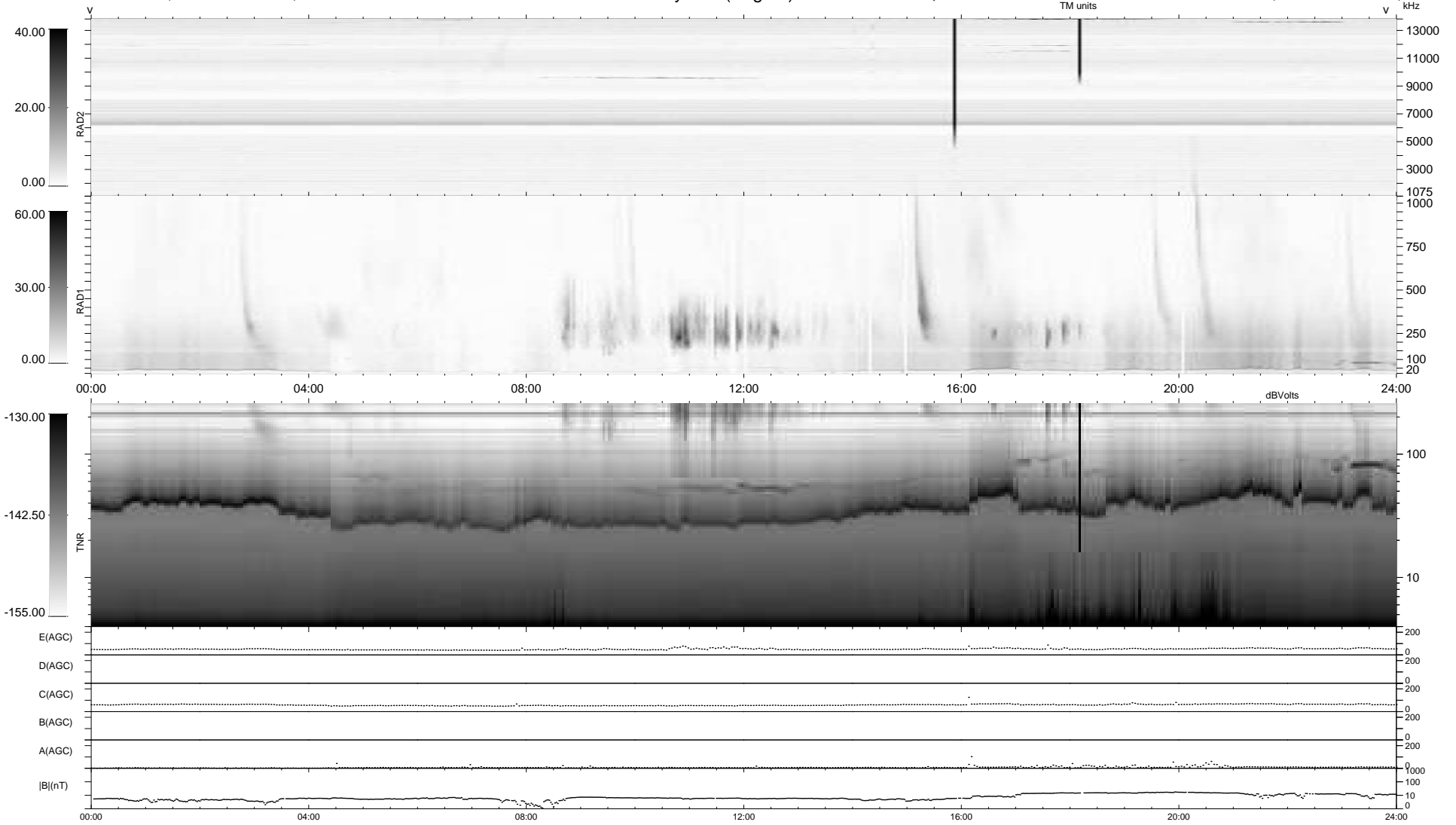
21 bad + 918 good MF/939MF projected (97%) - 0 missing MFs  
 Avg interval = 180 secs  
 Re = 195.15 (194.34, 1.34, -17.78 GSE)

windlib 2.0b

LZ version = v01

### WIND/WAVES Summary Plot (Page 1) for 25-JAN-2013, DOY = 25

DAILY 2013-01-26 16:46:08  
 Re = 195.22 (194.33, 4.97, -17.91 GSE)



```

RAD2
Antenna Ey .....
Mode LIN(1) .....
SUM/SEP SEP .....
Toggle OFF .....

RAD1
Antenna Ex .....
Mode LIS(2,4) .....
SUM/SEP SUM .....
Toggle OFF .....

TNR
Antenna ExEy .....
Mode A-32 .....
Sweep ACE .....
  
```