

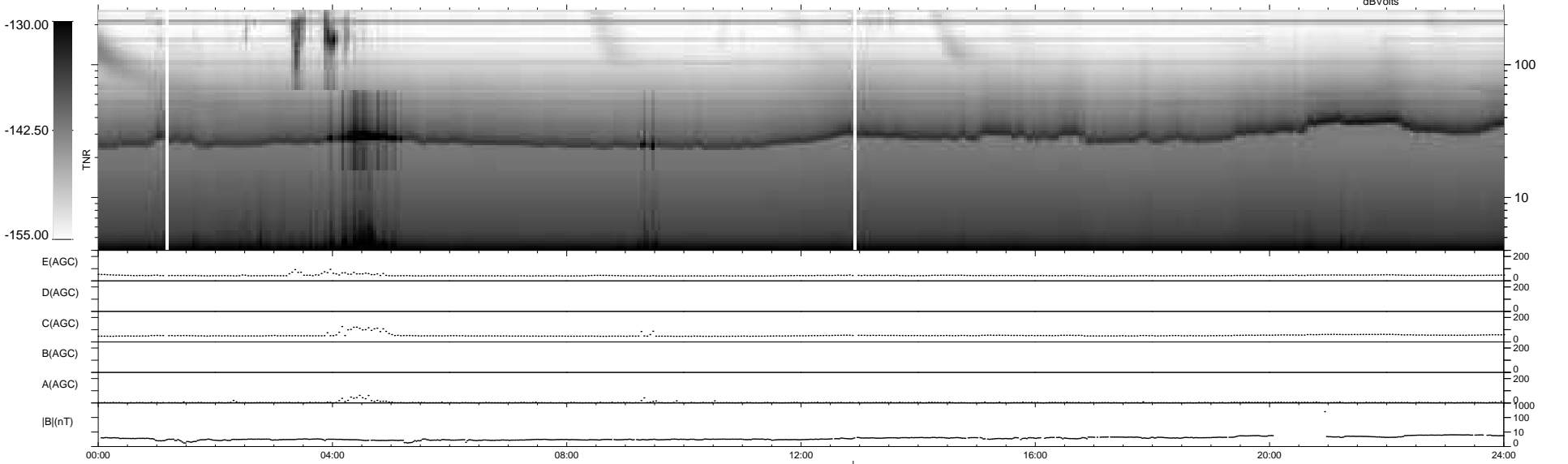
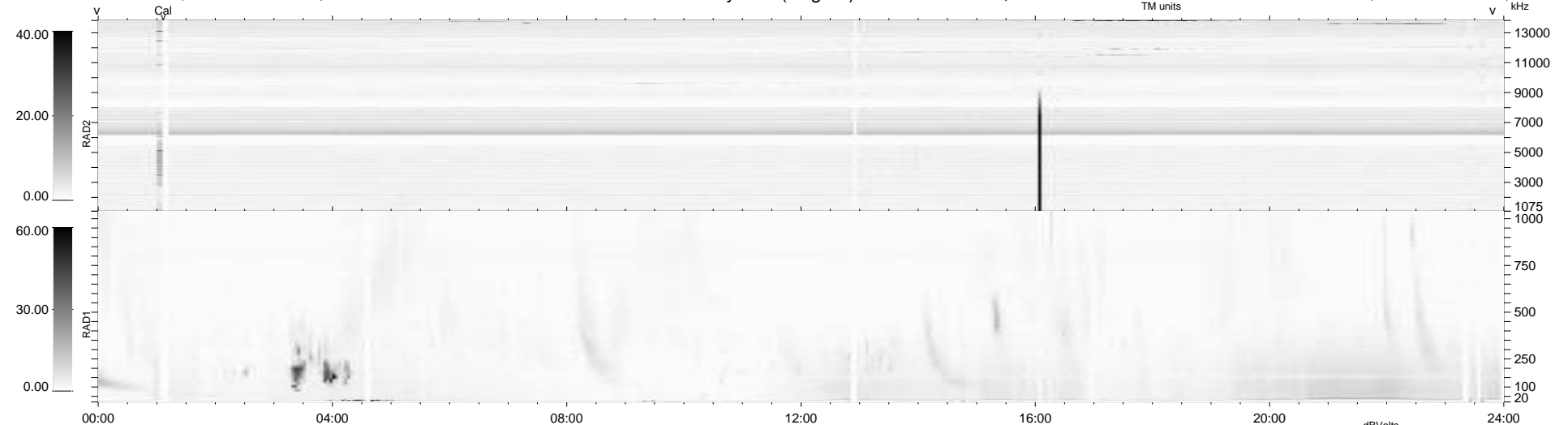
24 bad + 914 good MF/939MF projected (97%) - 1 missing MF  
 Avg interval = 180 secs  
 Re = 195.20 (194.39, -2.33, -17.62 GSE)

windlib 2.0b

LZ version = v01

### WIND/WAVES Summary Plot (Page 1) for 24-JAN-2013, DOY = 24

DAILY 2013-01-25 23:46:10  
 Re = 195.15 (194.34, 1.32, -17.78 GSE)



```

RAD2
Antenna Ey .....
Mode LIN(1) .....
SUM/SEP SEP .....
Toggle OFF .....

RAD1
Antenna Ex .....
Mode LIS(2,4) .....
SUM/SEP SUM .....
Toggle OFF .....

TNR
Antenna ExEy .....
Mode A-32 .....
Sweep ACE .....
  
```