

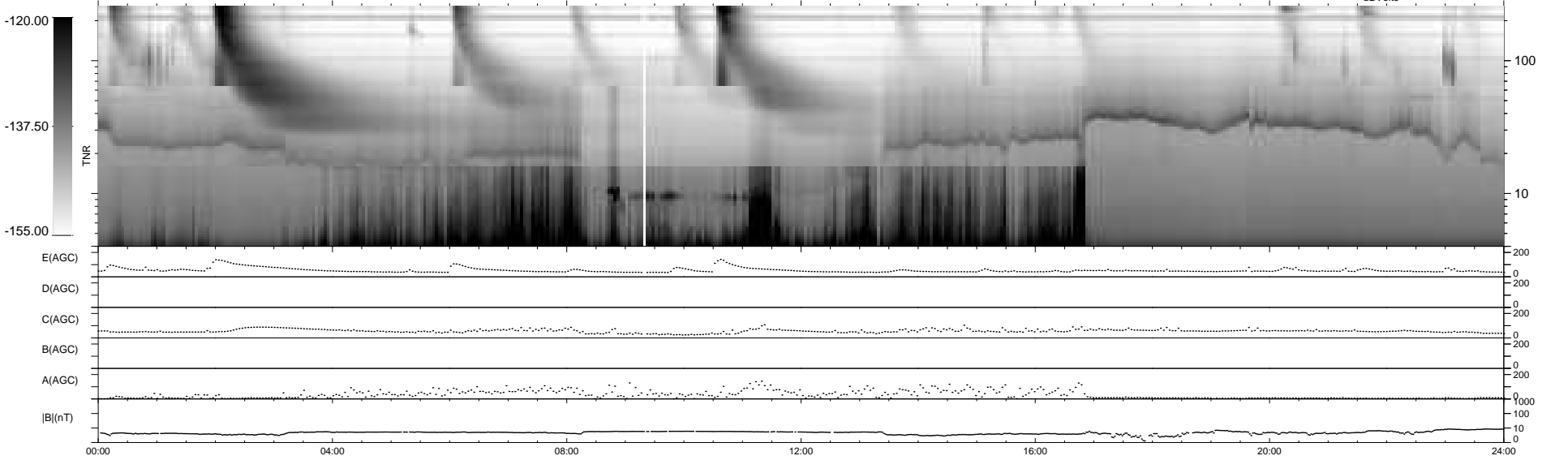
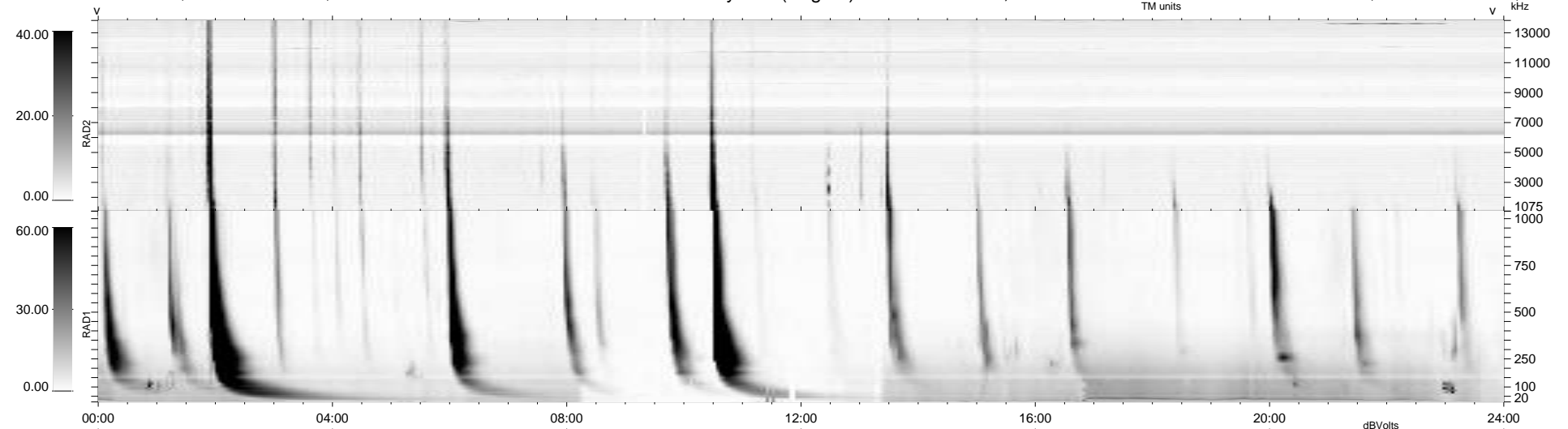
16 bad + 924 good MF/940MF projected (98%) - 0 missing MFs
 Avg interval = 180 secs
 Re = 196.96 (195.18, -20.82, -16.30 GSE)

windlib 2.0b

LZ version = v01

WIND/WAVES Summary Plot (Page 1) for 19-JAN-2013, DOY = 19

DAILY 2013-01-22 15:02:17
 Re = 196.42 (194.96, -17.14, -16.62 GSE)



RAD2
 Antenna Ey
 Mode LIN(1)
 SUM/SEP SEP
 Toggle OFF
 RAD1
 Antenna Ex
 Mode LIS(2,4)
 SUM/SEP SUM
 Toggle OFF
 TNR
 Antenna ExEy
 Mode A-32
 Sweep ACE