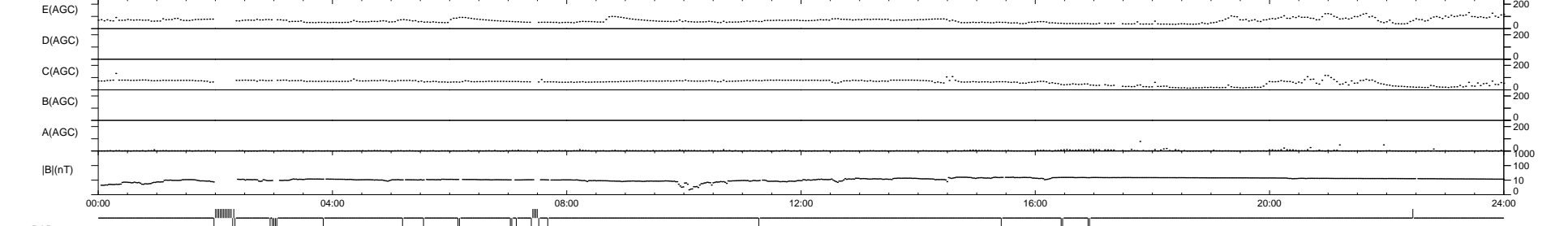
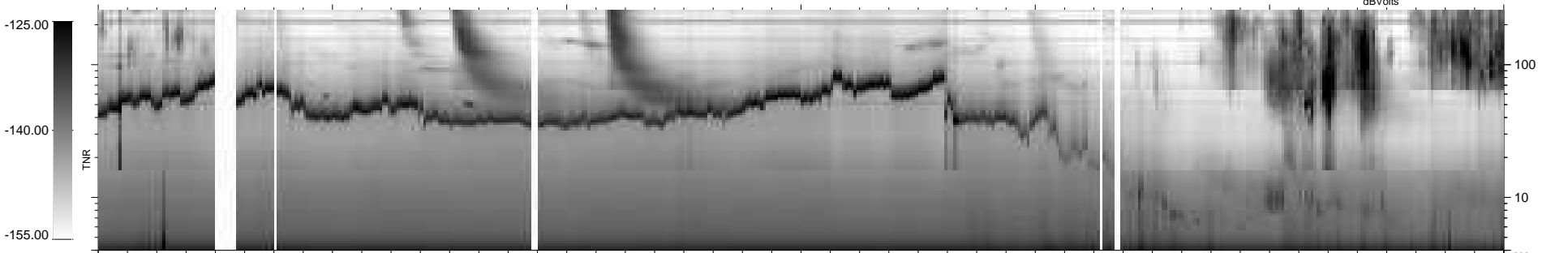
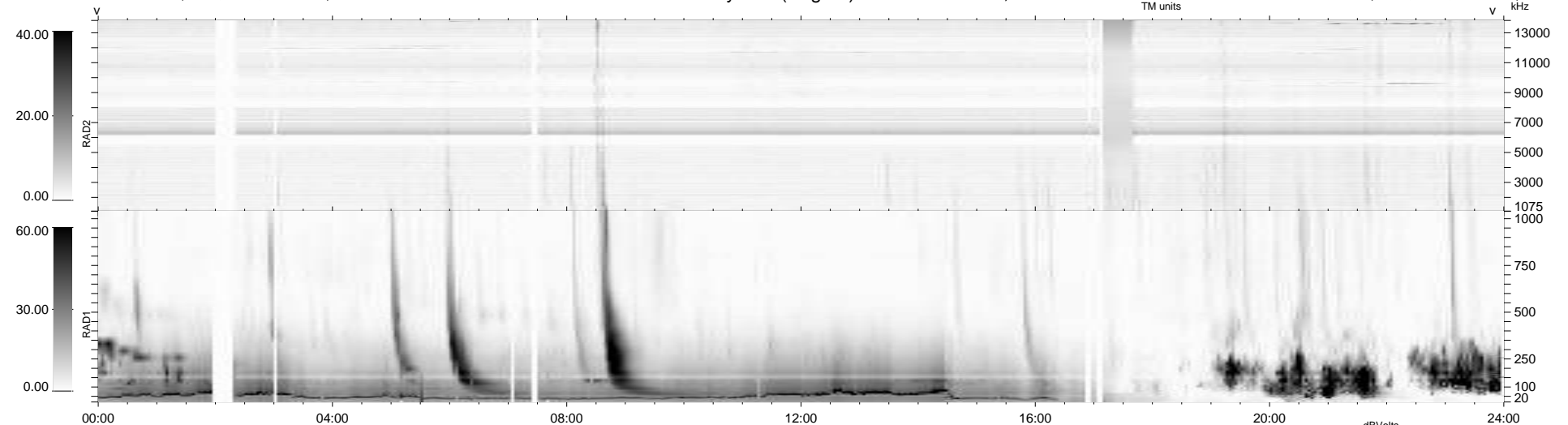


25 bad + 897 good MF/939MF projected (95%) - 17 missing MFs
 Avg interval = 180 secs
 Re = 198.30 (195.66, -28.21, -15.56 GSE)

windlib 2.0b LZ version = v02
 DAILY 2013-01-22 15:00:26
 Re = 197.59 (195.41, -24.55, -15.94 GSE)

WIND/WAVES Summary Plot (Page 1) for 17-JAN-2013, DOY = 17



```

RAD2
Antenna Ey .....
Mode LIN(1) .....
SUM/SEP SEP .....
Toggle OFF .....
RAD1
Antenna Ex .....
Mode LIS(2,4) .....
SUM/SEP SUM .....
Toggle OFF .....
TNR
Antenna ExEy .....
Mode A-32 .....
Sweep ACE .....
  
```