

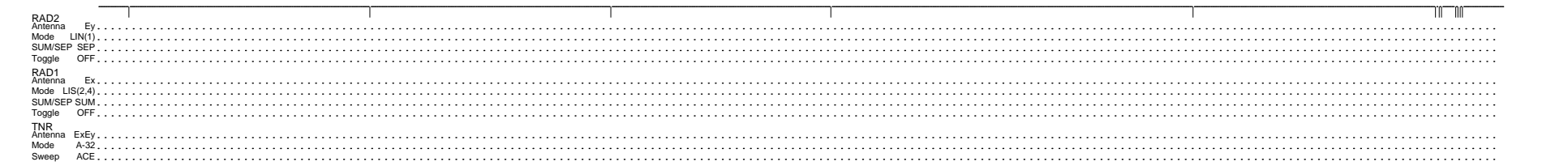
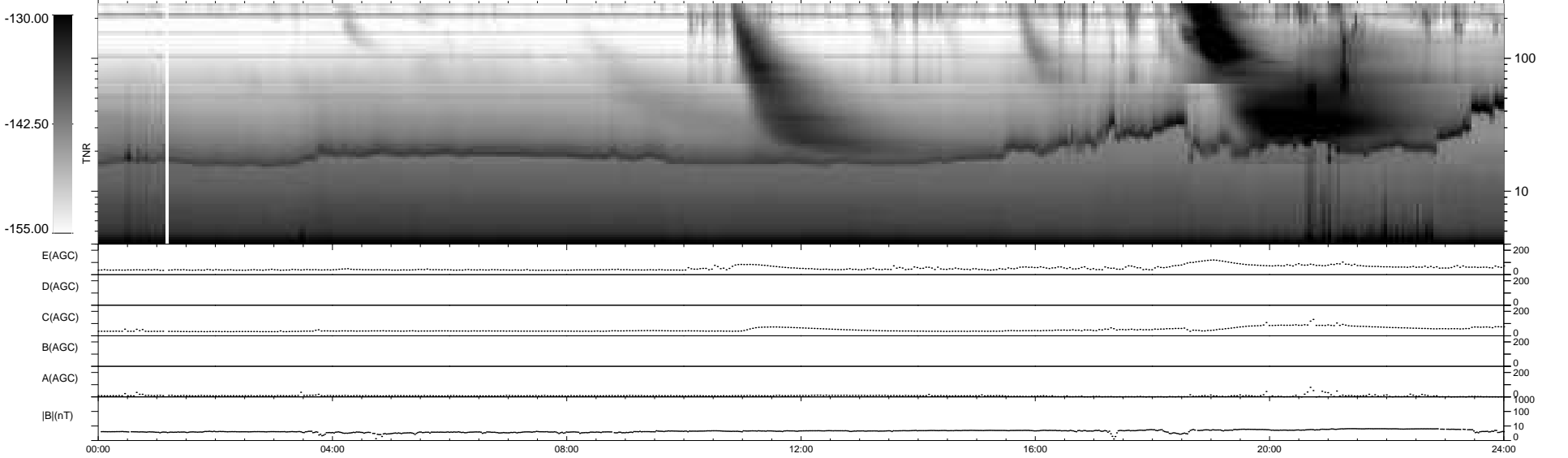
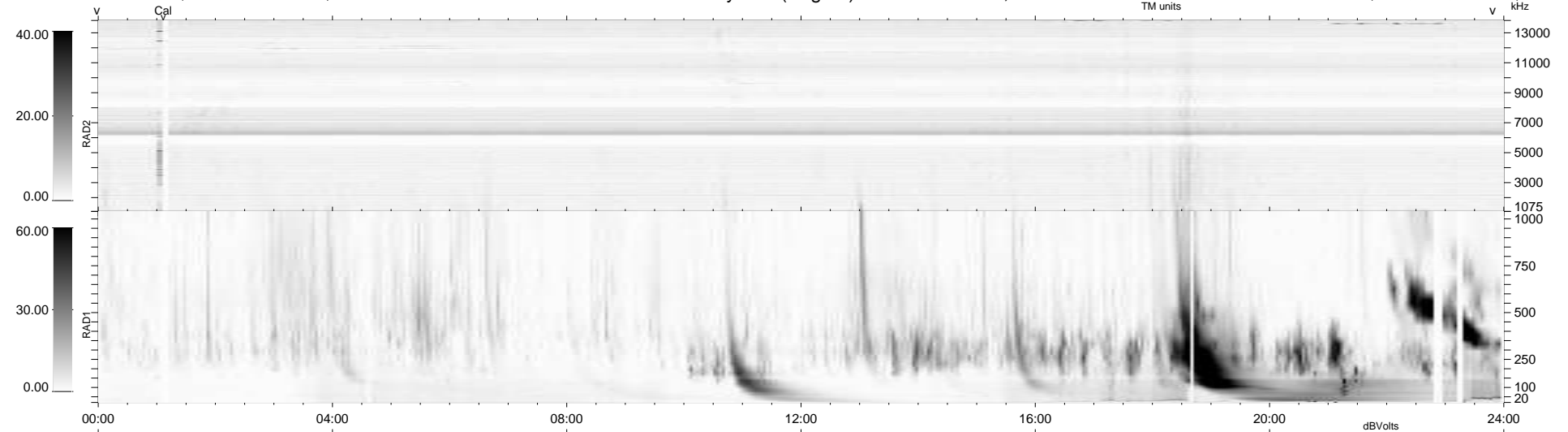
12 bad + 927 good MF/939MF projected (98%) - 0 missing MFs  
 Avg interval = 180 secs  
 Re = 199.08 (195.92, -31.89, -15.15 GSE)

windlib 2.0b

LZ version = v01

### WIND/WAVES Summary Plot (Page 1) for 16-JAN-2013, DOY = 16

DAILY 2013-01-22 14:59:30  
 Re = 198.30 (195.66, -28.24, -15.56 GSE)



RAD2  
 Antenna Ey .....  
 Mode LIN(1) .....  
 SUM/SEP SEP .....  
 Toggle OFF .....  
 RAD1  
 Antenna Ex .....  
 Mode LIS(2,4) .....  
 SUM/SEP SUM .....  
 Toggle OFF .....  
 TNR  
 Antenna ExEy .....  
 Mode A-32 .....  
 Sweep ACE .....