

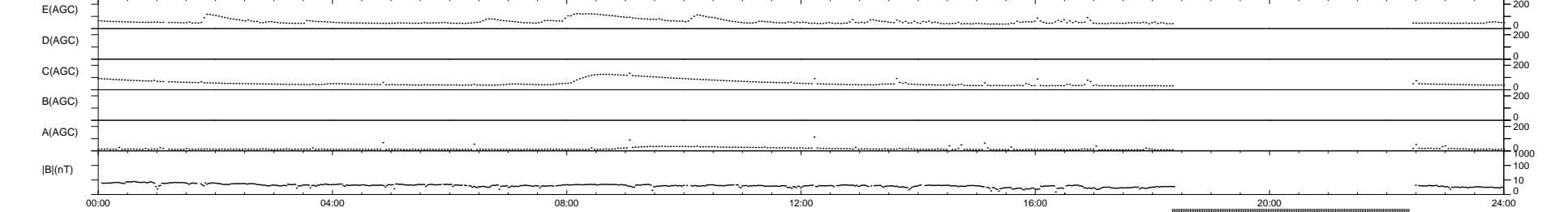
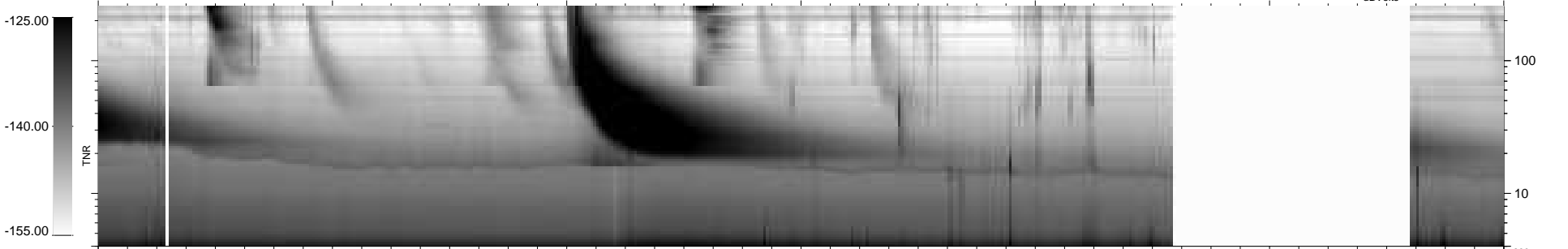
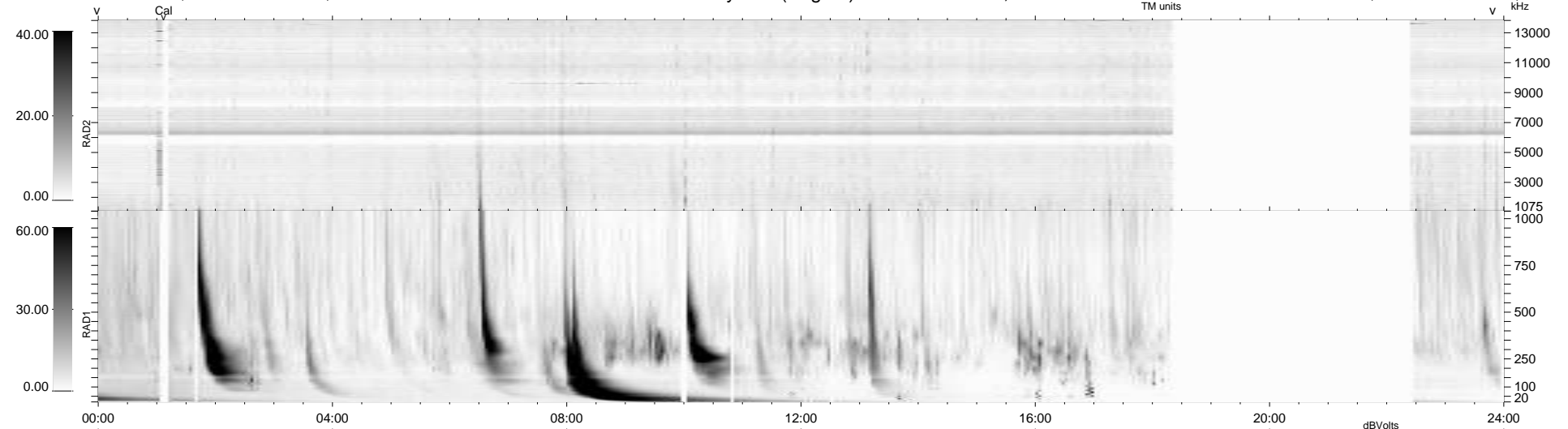
21 bad + 759 good MF/939MF projected (80%) - 159 missing MFs  
 Avg interval = 180 secs  
 Re = -200.82 (196.46, -39.14, -14.27 GSE)

windlib 2.0b

LZ version = v01

### WIND/WAVES Summary Plot (Page 1) for 14-JAN-2013, DOY = 14

DAILY 2013-01-15 21:46:08  
 Re = 199.93 (196.19, -35.56, -14.72 GSE)



```

RAD2
Antenna Ey .....
Mode LIN(1) .....
SUM/SEP SEP .....
Toggle OFF .....

RAD1
Antenna Ex .....
Mode LIS(2,4) .....
SUM/SEP SUM .....
Toggle OFF .....

TNR
Antenna ExEy .....
Mode A-32 .....
Sweep ACE .....
  
```