

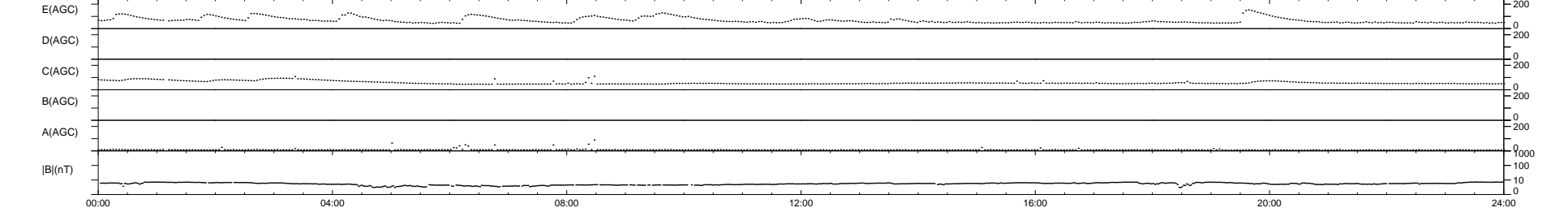
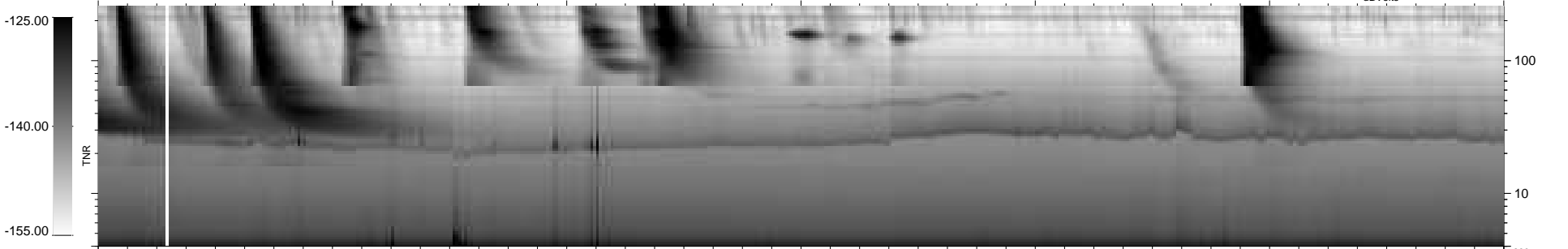
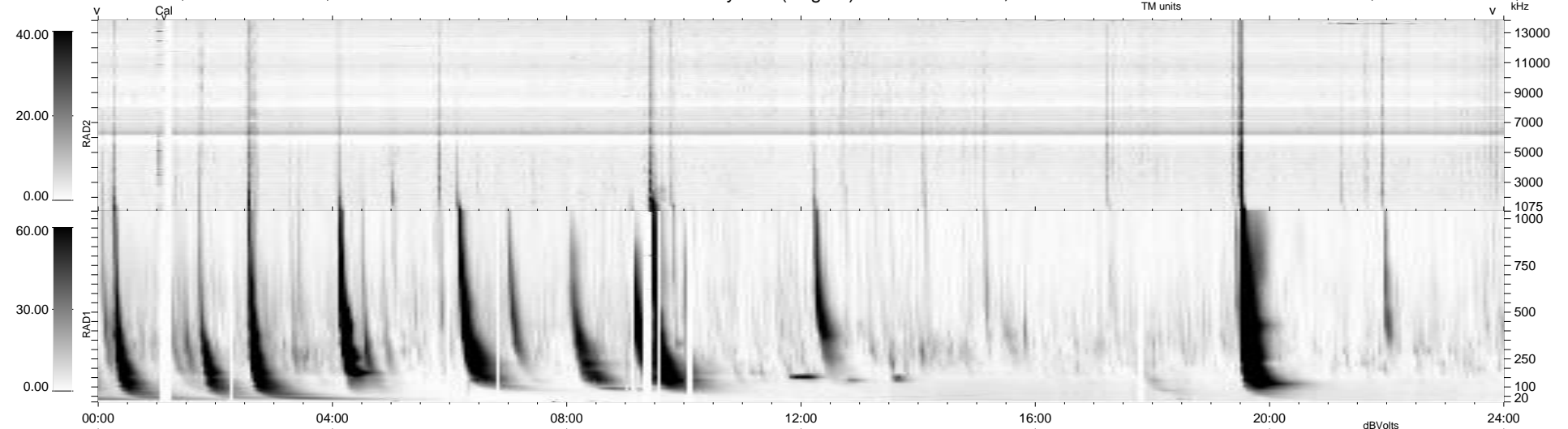
21 bad + 919 good MF/940MF projected (97%) - 0 missing MFs
 Avg interval = 180 secs
 Re = 202.75 (196.97, -46.20, -13.29 GSE)

windlib 2.0b

LZ version = v01

WIND/WAVES Summary Plot (Page 1) for 12-JAN-2013, DOY = 12

DAILY 2013-01-22 14:55:46
 Re = 201.78 (196.72, -42.73, -13.79 GSE)



```

RAD2
Antenna Ey .....
Mode LIN(1) .....
SUM/SEP SEP .....
Toggle OFF .....

RAD1
Antenna Ex .....
Mode LIS(2,4) .....
SUM/SEP SUM .....
Toggle OFF .....

TNR
Antenna ExEy .....
Mode A-32 .....
Sweep ACE .....
  
```