

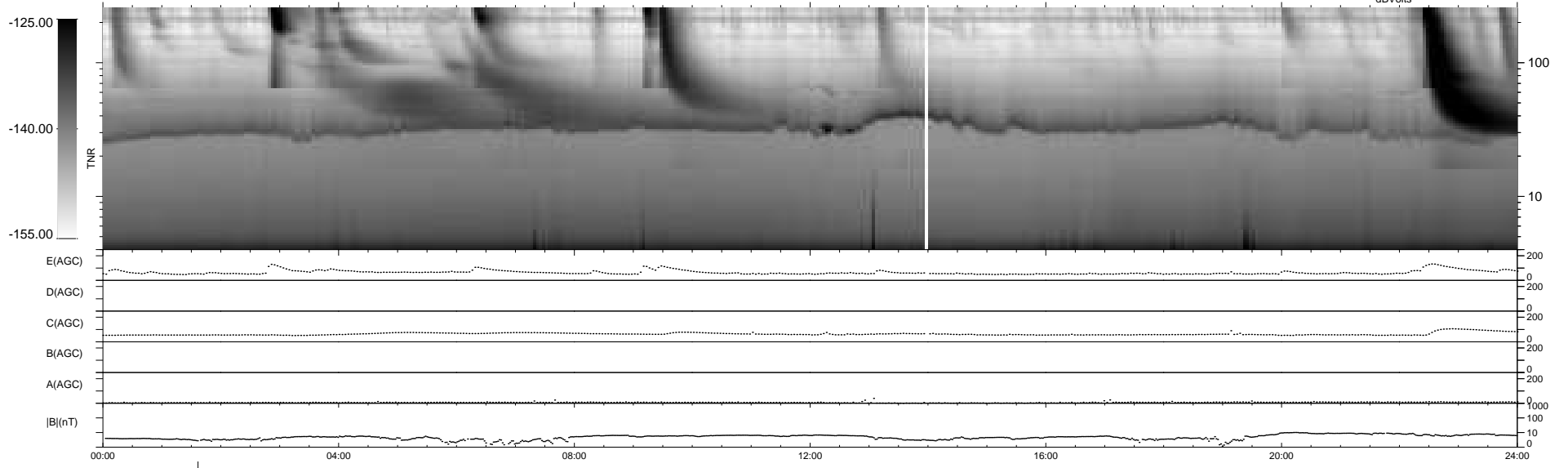
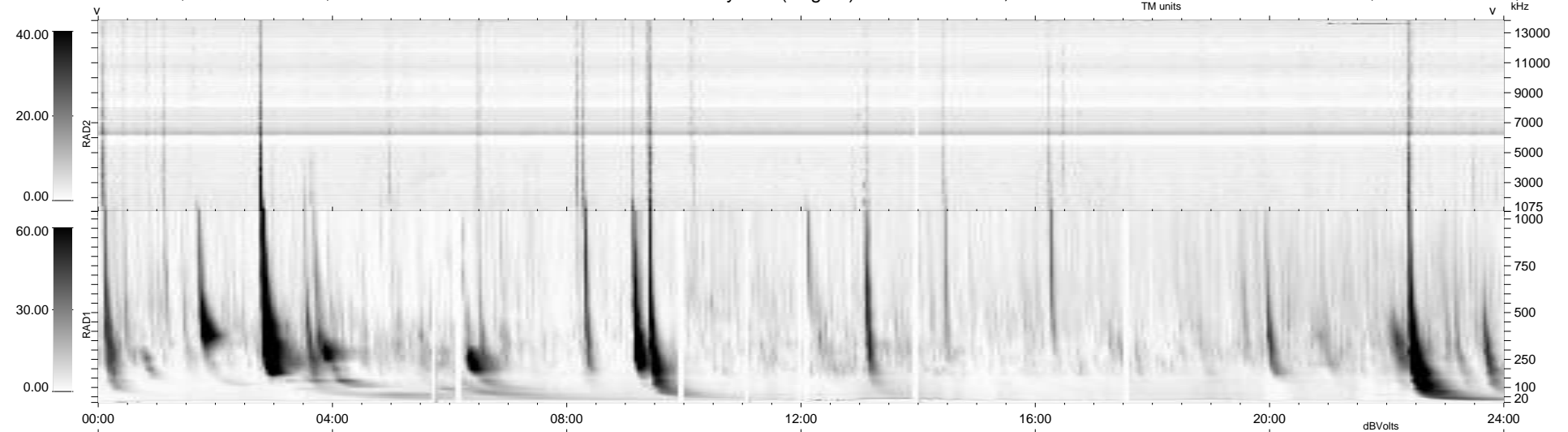
21 bad + 917 good MF/939MF projected (97%) - 1 missing MF
 Avg interval = 180 secs
 Re = 203.76 (197.21, -49.63, -12.78 GSE)

windlib 2.0b

LZ version = v01

WIND/WAVES Summary Plot (Page 1) for 11-JAN-2013, DOY = 11

DAILY 2013-01-22 14:54:49
 Re = 202.76 (196.97, -46.23, -13.29 GSE)



```

RAD2
Antenna Ey .....
Mode LIN(1) .....
SUM/SEP SEP .....
Toggle OFF .....

RAD1
Antenna Ex .....
Mode LIS(2,4) .....
SUM/SEP SUM .....
Toggle OFF .....

TNR
Antenna ExEy .....
Mode A-32 .....
Sweep ACE .....
  
```