

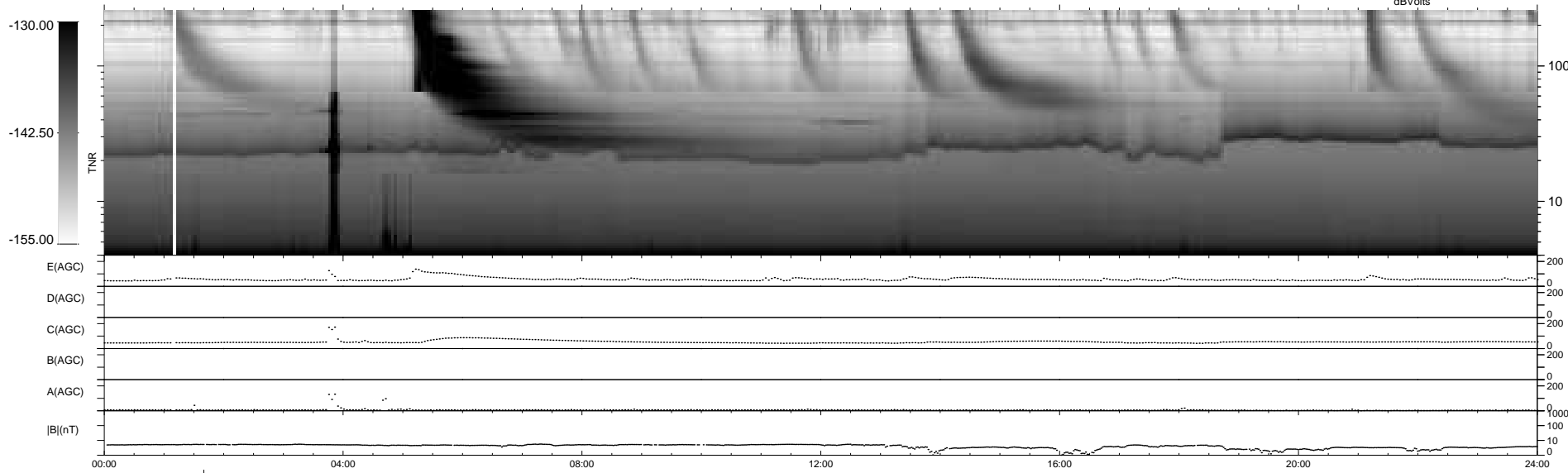
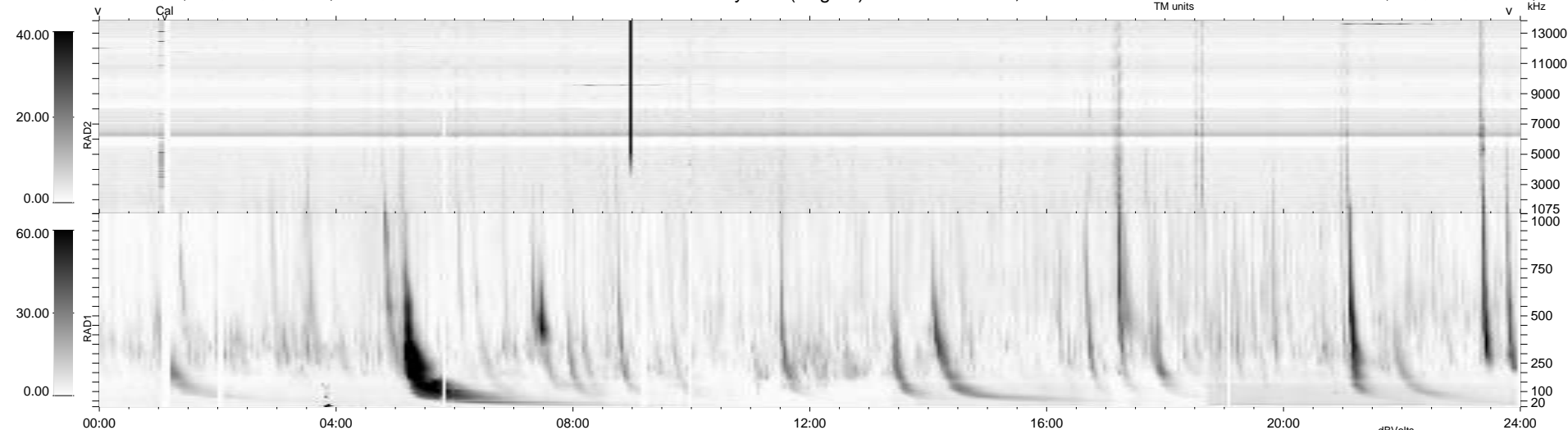
18 bad + 920 good MF/939MF projected (97%) - 1 missing MF
 Avg interval = 180 secs
 Re = 204.79 (197.44, -52.98, -12.24 GSE)

windlib 2.0b

LZ version = v01

WIND/WAVES Summary Plot (Page 1) for 10-JAN-2013, DOY = 10

DAILY 2013-01-22 14:53:52
 Re = 203.76 (197.21, -49.66, -12.77 GSE)



RAD2
 Antenna Ey
 Mode LIN(1)
 SUM/SEP SEP
 Toggle OFF

RAD1
 Antenna Ex
 Mode LIS(2,4)
 SUM/SEP SUM
 Toggle OFF

TNR
 Antenna ExEy
 Mode A-32
 Sweep ACE