

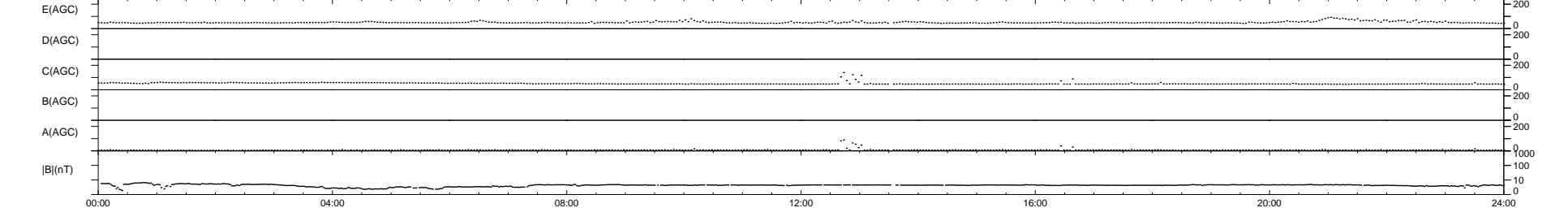
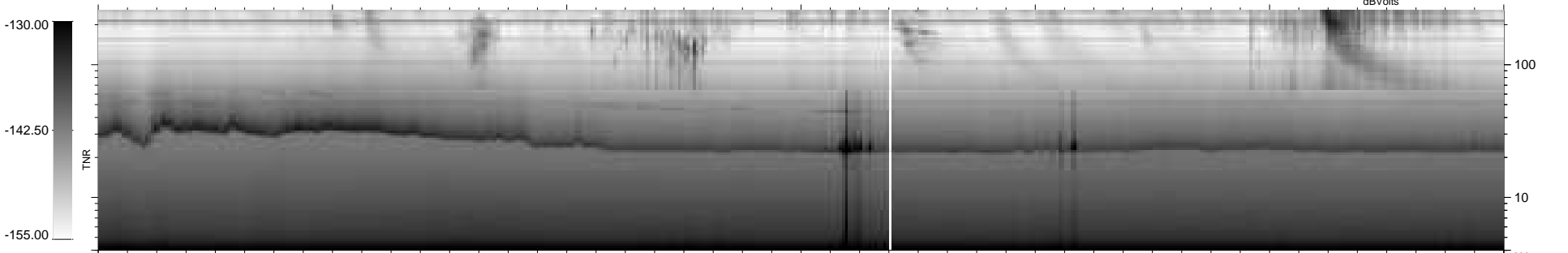
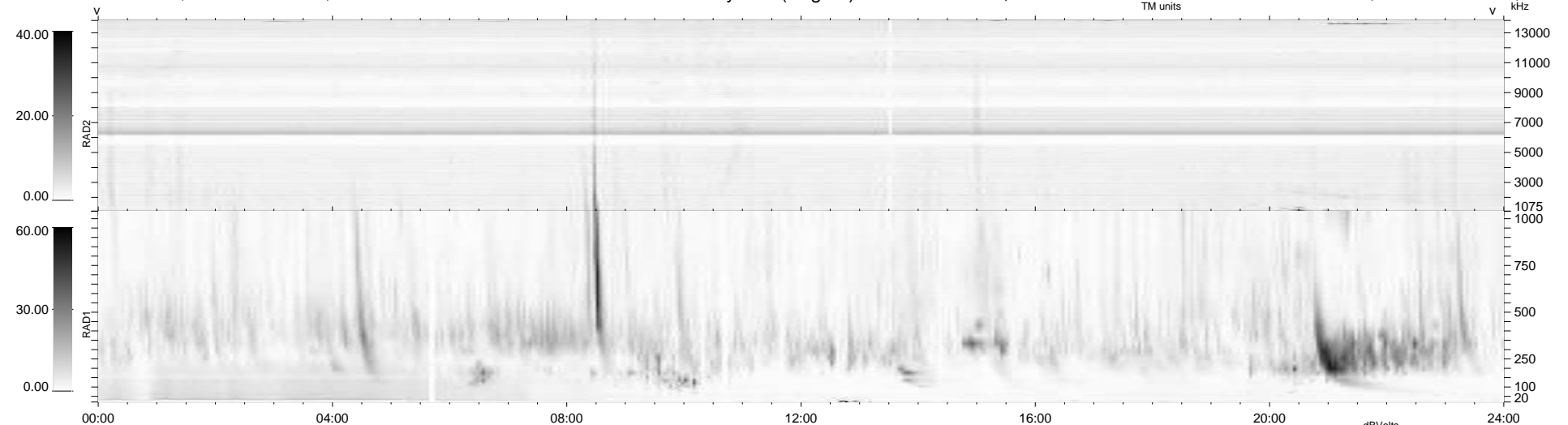
19 bad + 920 good MF/939MF projected (97%) - 0 missing MFs
 Avg interval = 180 secs
 Re = 205.83 (197.66, -56.22, -11.68 GSE)

windlib 2.0b

LZ version = v01

WIND/WAVES Summary Plot (Page 1) for 09-JAN-2013, DOY = 9

DAILY 2013-01-22 14:52:56
 Re = 204.79 (197.44, -53.00, -12.24 GSE)



RAD2
 Antenna Ey
 Mode LIN(1)
 SUM/SEP SEP
 Toggle OFF
 RAD1
 Antenna Ex
 Mode LIS(2,4)
 SUM/SEP SUM
 Toggle OFF
 TNR
 Antenna ExEy
 Mode A-32
 Sweep ACE