

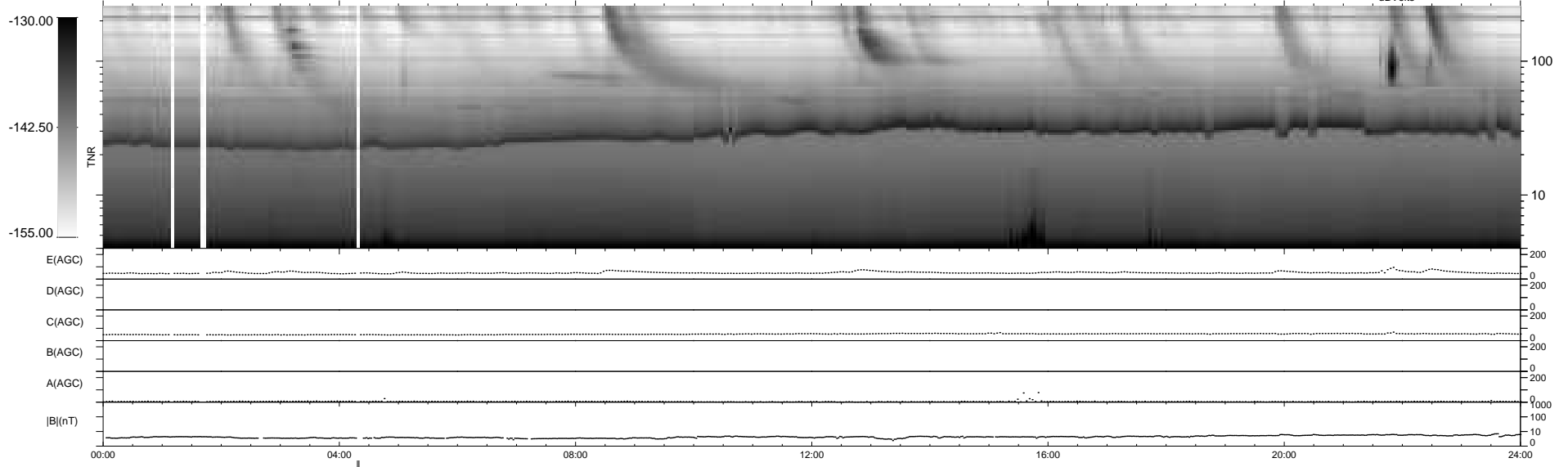
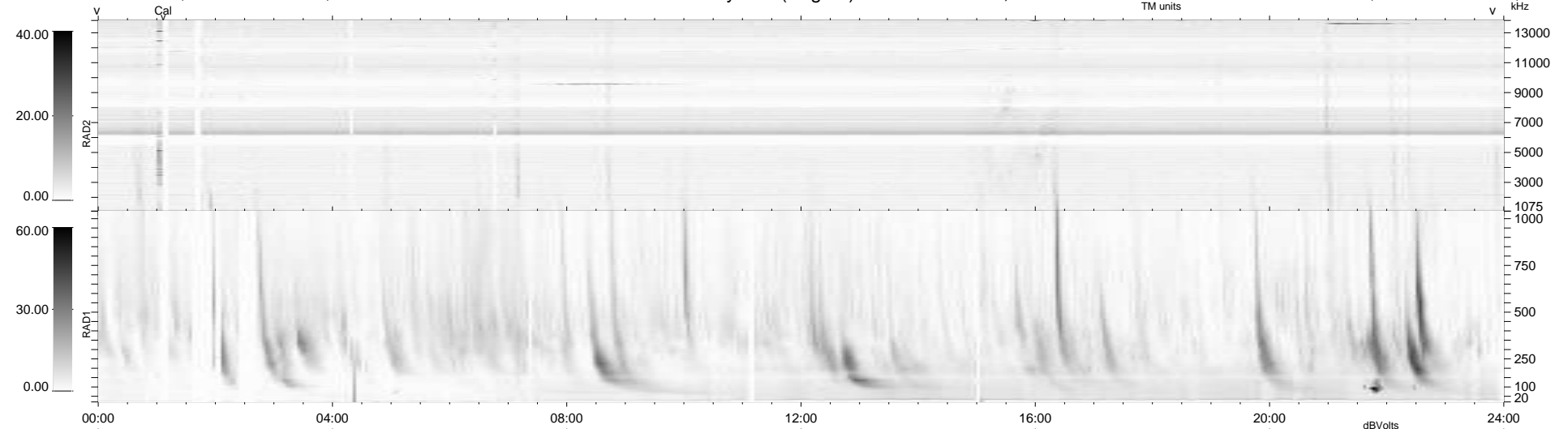
34 bad + 903 good MF/939MF projected (96%) - 2 missing MFs
 Avg interval = 180 secs
 Re = 206.90 (197.89, -59.35, -11.11 GSE)

windlib 2.0b

LZ version = v01

WIND/WAVES Summary Plot (Page 1) for 08-JAN-2013, DOY = 8

DAILY 2013-01-22 14:51:59
 Re = 205.84 (197.66, -56.24, -11.68 GSE)



RAD2
 Antenna Ey
 Mode LIN(1)
 SUM/SEP SEP
 Toggle OFF

RAD1
 Antenna Ex
 Mode LIS(2,4)
 SUM/SEP SUM
 Toggle OFF

TNR
 Antenna ExEy
 Mode A-32
 Sweep ACE