

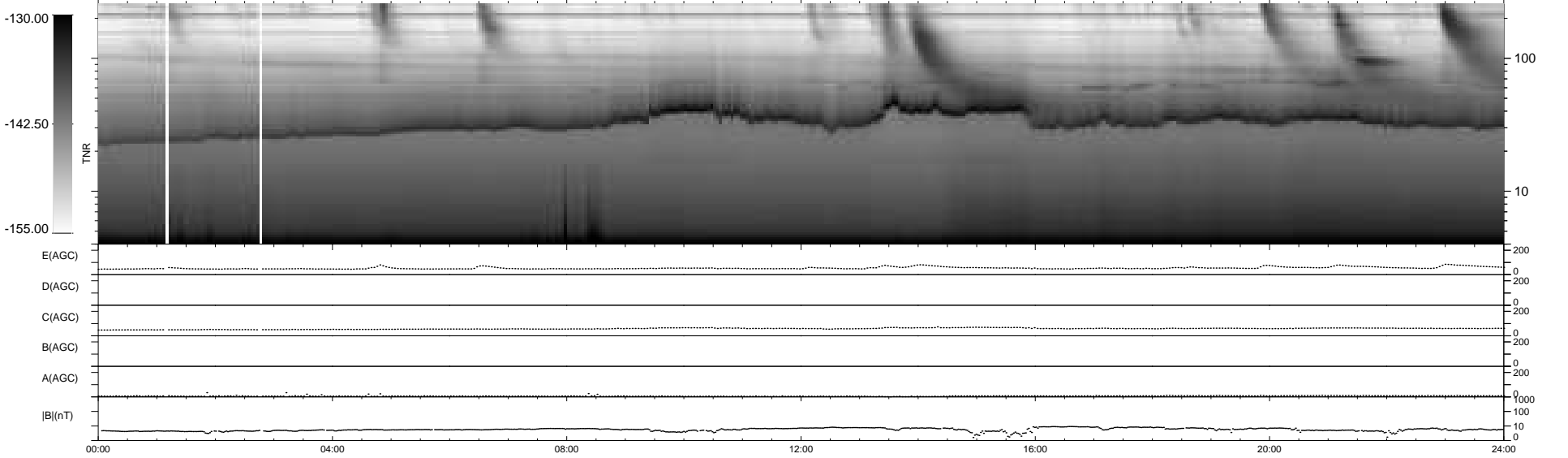
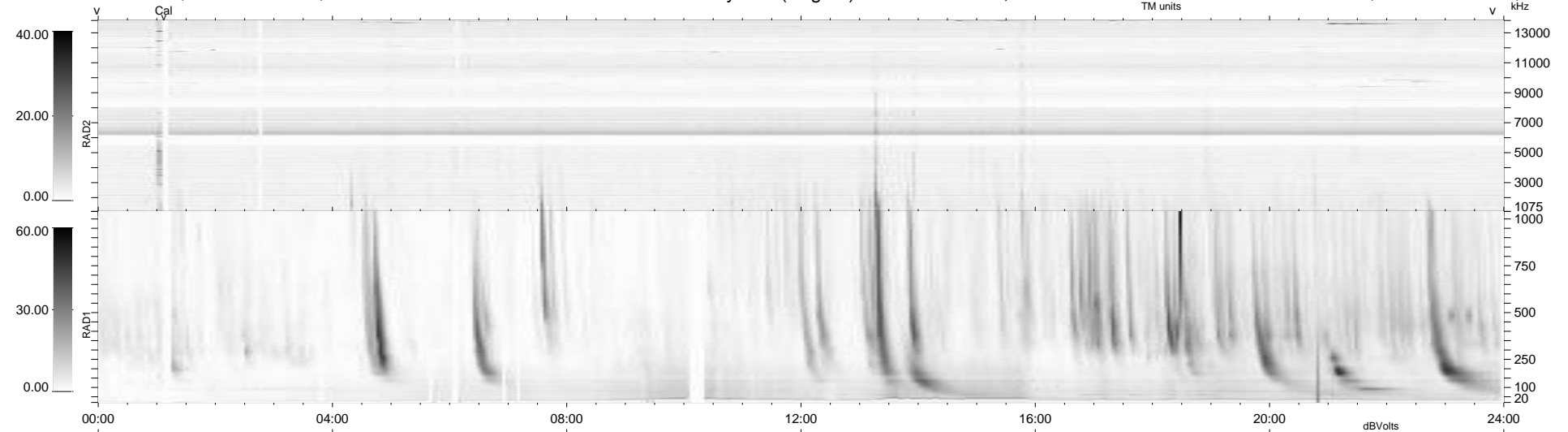
26 bad + 913 good MF/939MF projected (97%) - 0 missing MFs  
 Avg interval = 180 secs  
 Re = 209.07 (198.38, -65.25, -9.91 GSE)

windlib 2.0b

LZ version = v01

### WIND/WAVES Summary Plot (Page 1) for 06-JAN-2013, DOY = 6

DAILY 2013-01-22 14:50:05  
 Re = 207.98 (198.13, -62.39, -10.51 GSE)



RAD2  
 Antenna Ey .....  
 Mode LIN(1) .....  
 SUM/SEP SEP .....  
 Toggle OFF .....  
 RAD1  
 Antenna Ex .....  
 Mode LIS(2,4) .....  
 SUM/SEP SUM .....  
 Toggle OFF .....  
 TNR  
 Antenna ExEy .....  
 Mode A-32 .....  
 Sweep ACE .....