

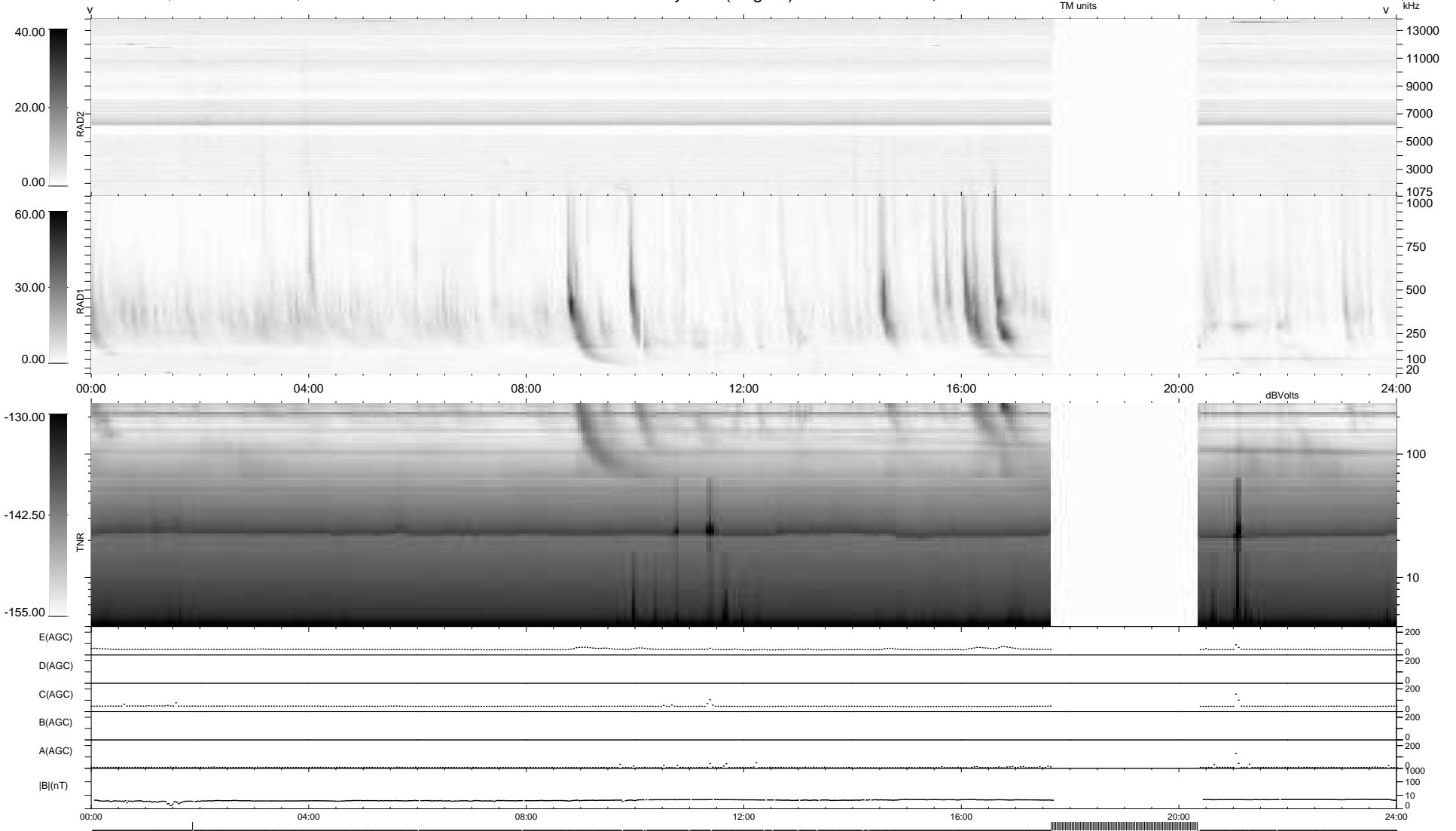
15 bad + 817 good MF/939MF projected (87%) - 107 missing MFs
 Avg interval = 180 secs
 Re = 210.18 (198.66, -68.01, -9.28 GSE)

windlib 2.0b

LZ version = v01

WIND/WAVES Summary Plot (Page 1) for 05-JAN-2013, DOY = 5

DAILY 2013-01-22 14:49:12
 Re = 209.08 (198.38, -65.27, -9.90 GSE)



```

RAD2
Antenna  Ey .....
Mode     LIN(1) .....
SUM/SEP  SEP .....
Toggle   OFF .....

RAD1
Antenna  Ex .....
Mode     LIS(2,4) .....
SUM/SEP  SUM .....
Toggle   OFF .....

TNR
Antenna  ExEy .....
Mode     A-32 .....
Sweep    ACE .....
  
```