

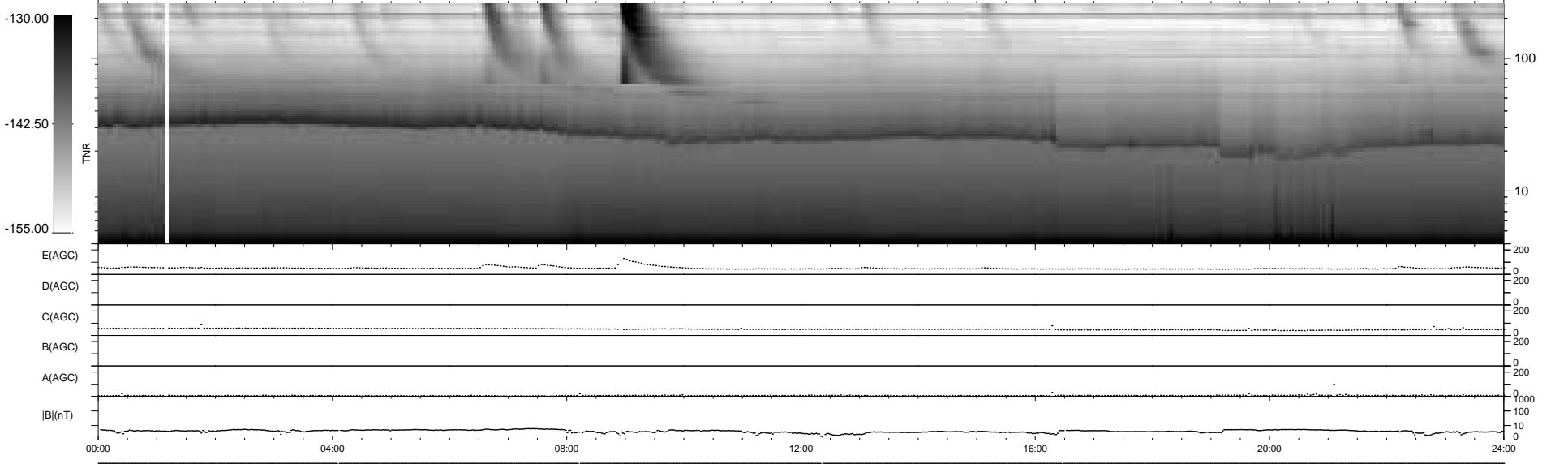
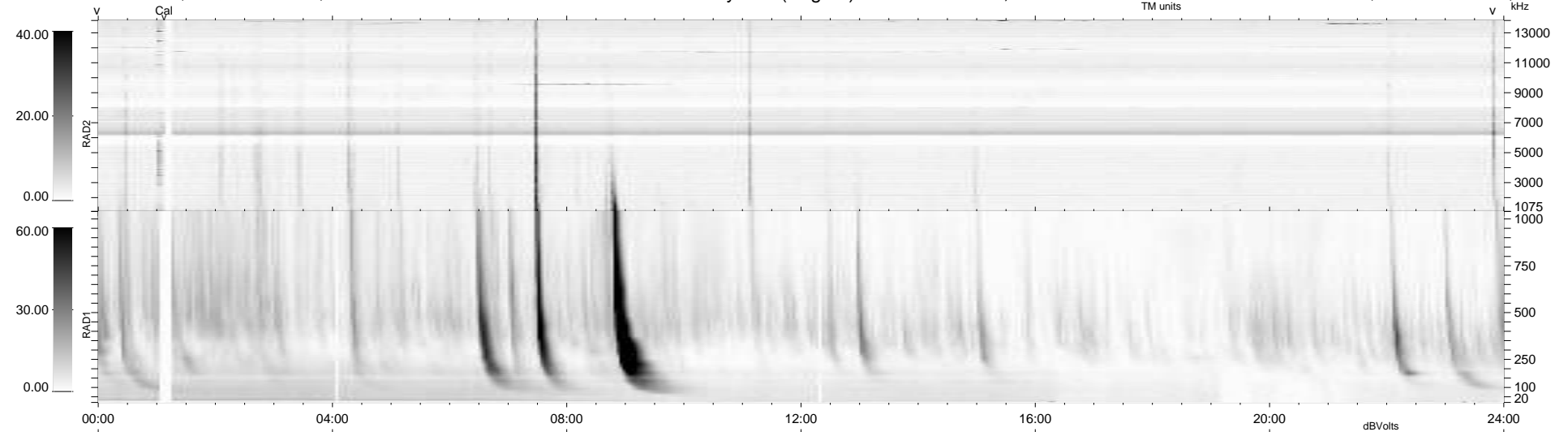
4 bad + 936 good MF/940MF projected (99%) - 0 missing MFs
 Avg interval = 180 secs
 Re = 211.32 (198.98, -70.63, -8.63 GSE)

windlib 2.0b

LZ version = v01

WIND/WAVES Summary Plot (Page 1) for 04-JAN-2013, DOY = 4

DAILY 2013-01-22 14:48:15
 Re = 210.19 (198.66, -68.03, -9.27 GSE)



```

RAD2
Antenna Ey .....
Mode LIN(1) .....
SUM/SEP SEP .....
Toggle OFF .....

RAD1
Antenna Ex .....
Mode LIS(2,4) .....
SUM/SEP SUM .....
Toggle OFF .....

TNR
Antenna ExEy .....
Mode A-32 .....
Sweep ACE .....
  
```