

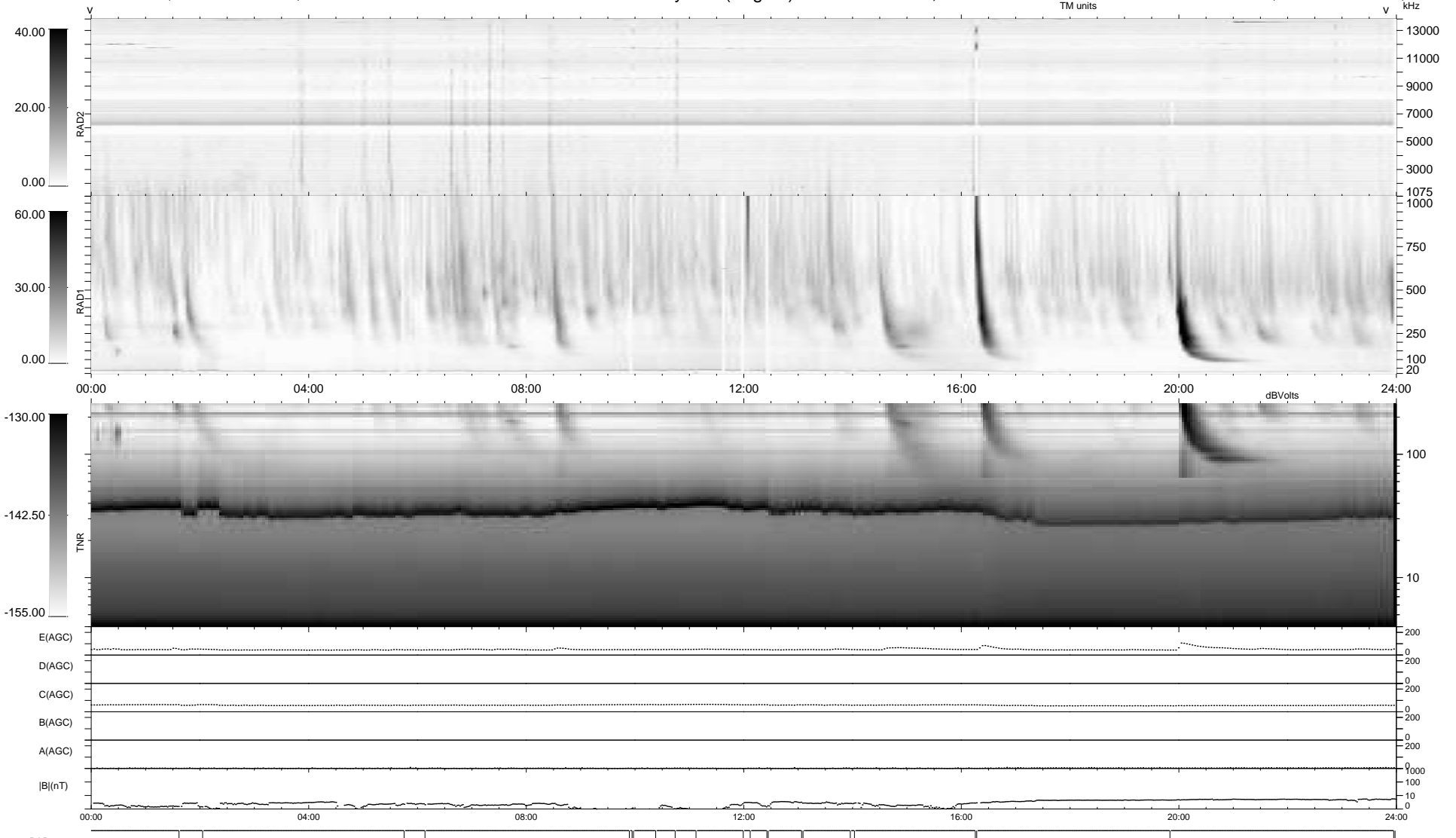
23 bad + 916 good MF/939MF projected (97%) - 0 missing MFs  
 Avg interval = 180 secs  
 Re = 212.48 (199.34, -73.11, -7.97 GSE)

windlib 2.0b

LZ version = v01

### WIND/WAVES Summary Plot (Page 1) for 03-JAN-2013, DOY = 3

DAILY 2013-01-22 14:47:18  
 Re = 211.33 (198.98, -70.65, -8.63 GSE)



```

RAD2
Antenna Ey .....
Mode LIN(1) .....
SUM/SEP SEP .....
Toggle OFF .....

RAD1
Antenna Ex .....
Mode LIS(2,4) .....
SUM/SEP SUM .....
Toggle OFF .....

TNR
Antenna ExEy .....
Mode A-32 .....
Sweep ACE .....
  
```