

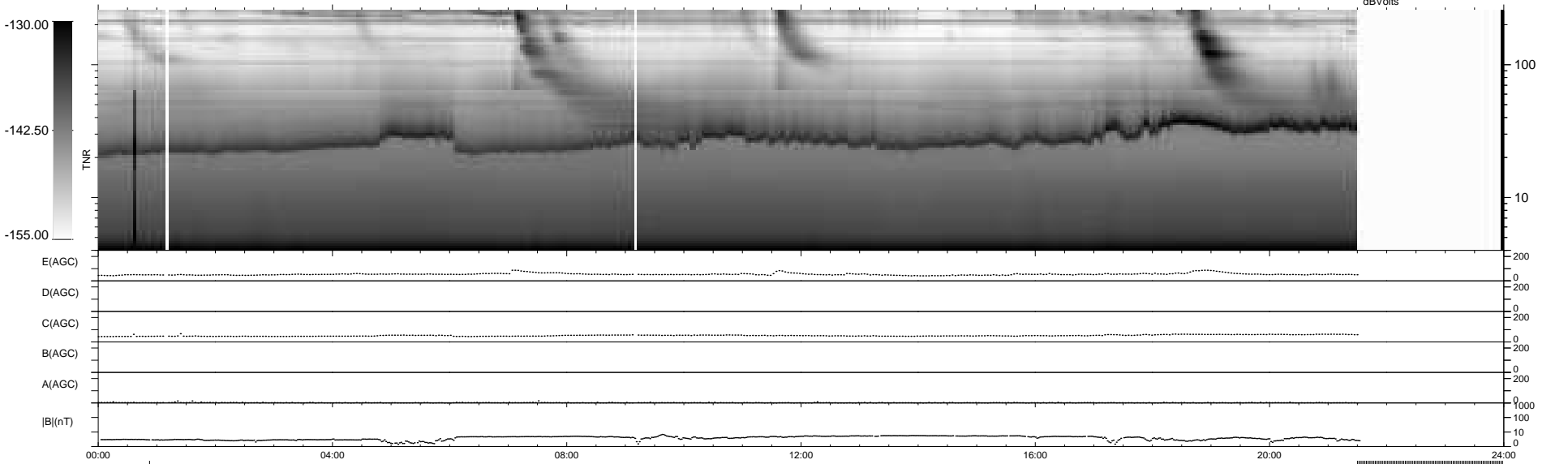
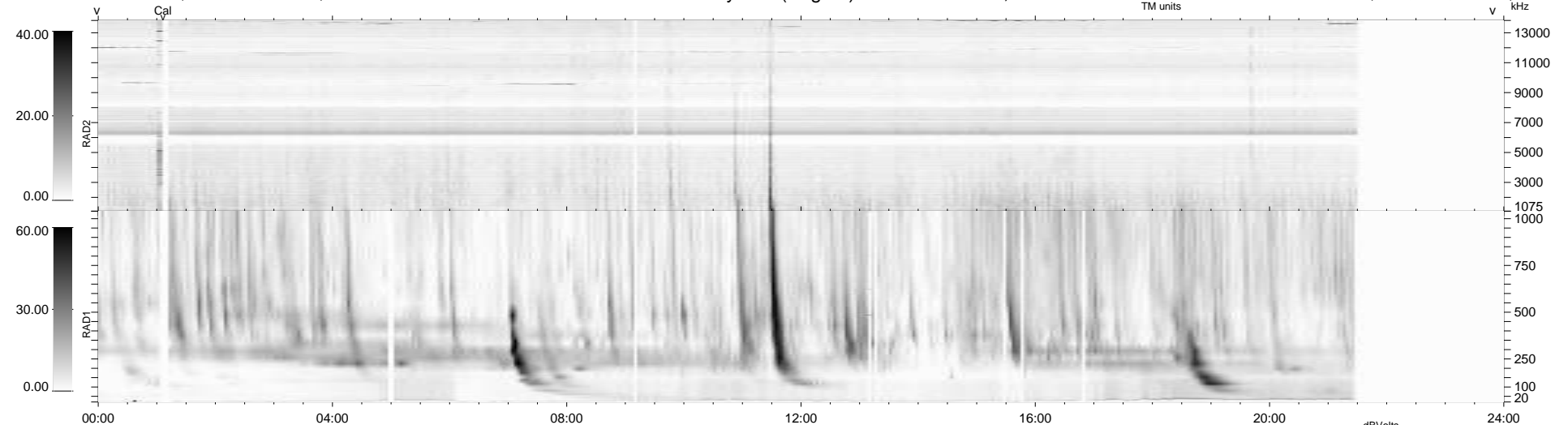
19 bad + 821 good MF/939MF projected (87%) - 99 missing MFs
 Avg interval = 180 secs
 Re = -213.66 (199.75, -75.46, -7.30 GSE)

windlib 2.0b

LZ version = v01

WIND/WAVES Summary Plot (Page 1) for 02-JAN-2013, DOY = 2

DAILY 2013-01-03 17:46:07
 Re = 212.48 (199.34, -73.13, -7.97 GSE)



```

RAD2
Antenna Ey .....
Mode LIN(1) .....
SUM/SEP SEP .....
Toggle OFF .....

RAD1
Antenna Ex .....
Mode LIS(2,4) .....
SUM/SEP SUM .....
Toggle OFF .....

TNR
Antenna ExEy .....
Mode A-32 .....
Sweep ACE .....
  
```