

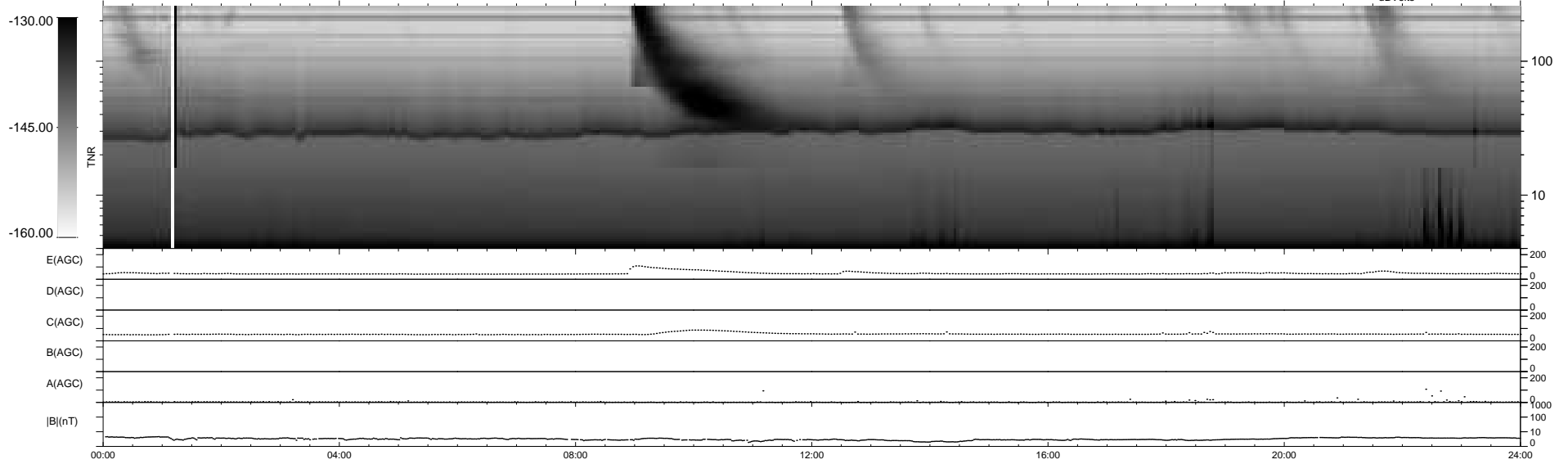
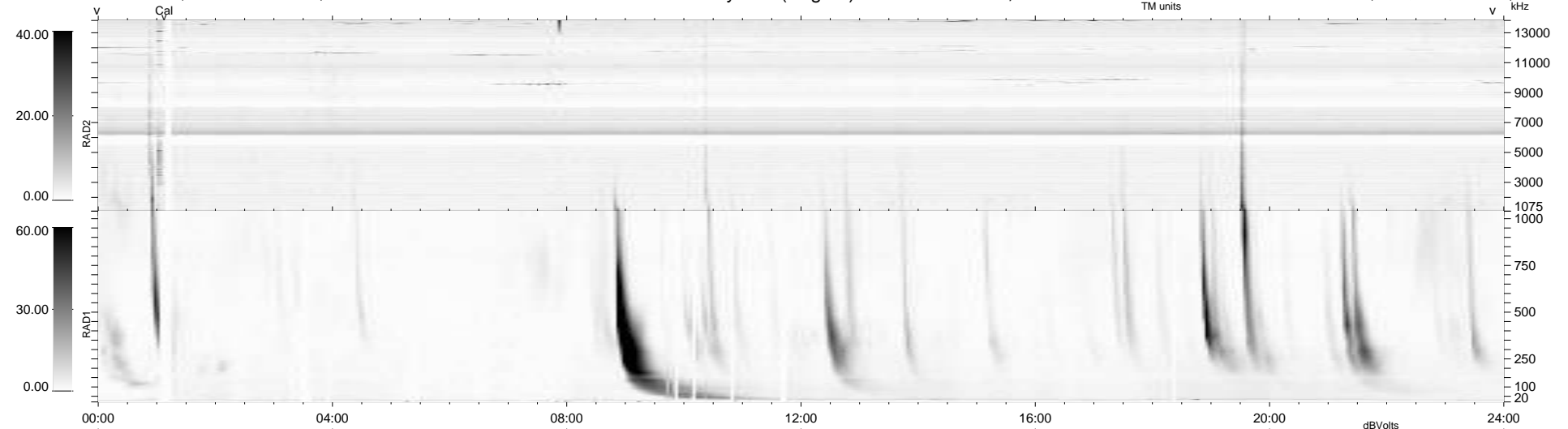
21 bad + 919 good MF/940MF projected (97%) - 0 missing MFs
 Avg interval = 180 secs
 Re = 221.28 (203.50, -86.85, -2.99 GSE)

windlib 2.0b

LZ version = v02

WIND/WAVES Summary Plot (Page 1) for 27-DEC-2012, DOY = 362

DAILY 2012-12-30 11:47:59
 Re = 219.96 (202.72, -85.27, -3.72 GSE)



```

RAD2
Antenna Ey .....
Mode LIN(1) .....
SUM/SEP SEP .....
Toggle OFF .....

RAD1
Antenna Ex .....
Mode LIS(2,4) .....
SUM/SEP SUM .....
Toggle OFF .....

TNR
Antenna ExEy .....
Mode A-32 .....
Sweep ACE .....
  
```