

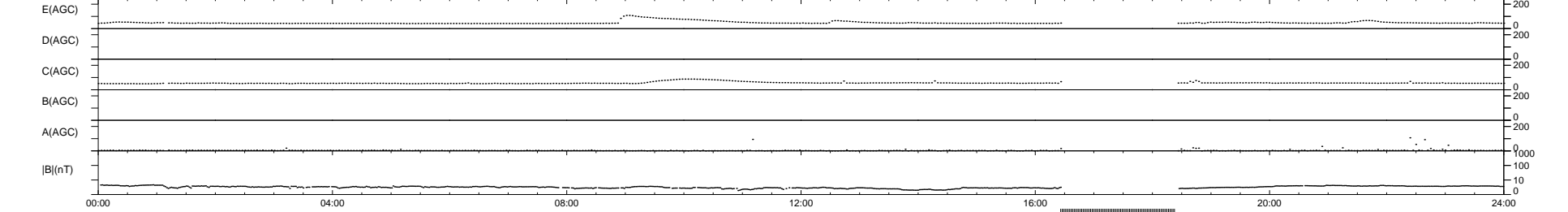
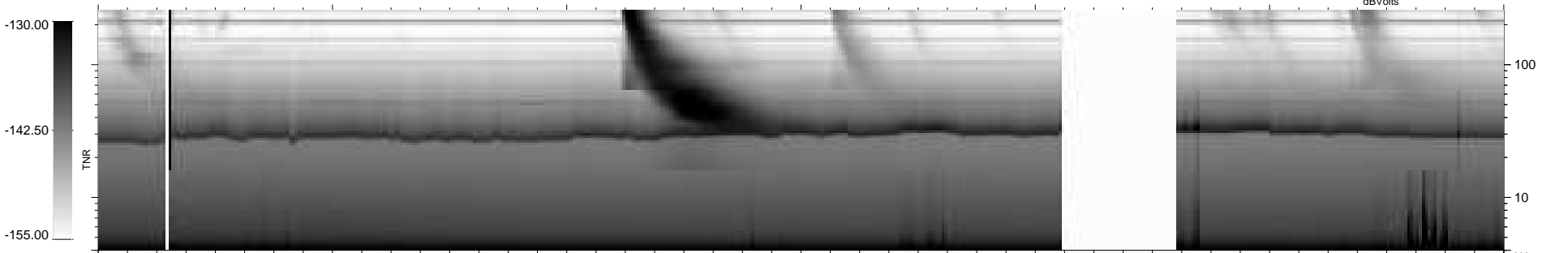
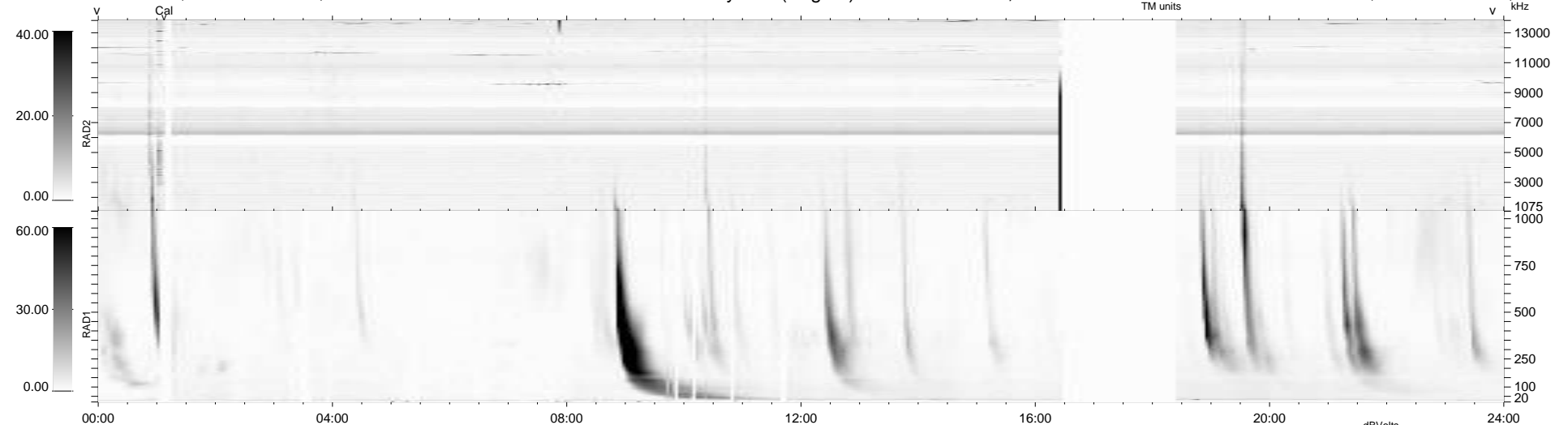
21 bad + 842 good MF/940MF projected (89%) - 77 missing MFs
 Avg interval = 180 secs
 Re = 221.28 (203.50, -86.85, -2.99 GSE)

windlib 2.0b

LZ version = v01

WIND/WAVES Summary Plot (Page 1) for 27-DEC-2012, DOY = 362

DAILY 2012-12-28 17:46:07
 Re = 219.96 (202.72, -85.27, -3.72 GSE)



RAD2
 Antenna Ey
 Mode LIN(1)
 SUM/SEP SEP
 Toggle OFF
 RAD1
 Antenna Ex
 Mode LIS(2,4)
 SUM/SEP SUM
 Toggle OFF
 TNR
 Antenna ExEy
 Mode A-32
 Sweep ACE