

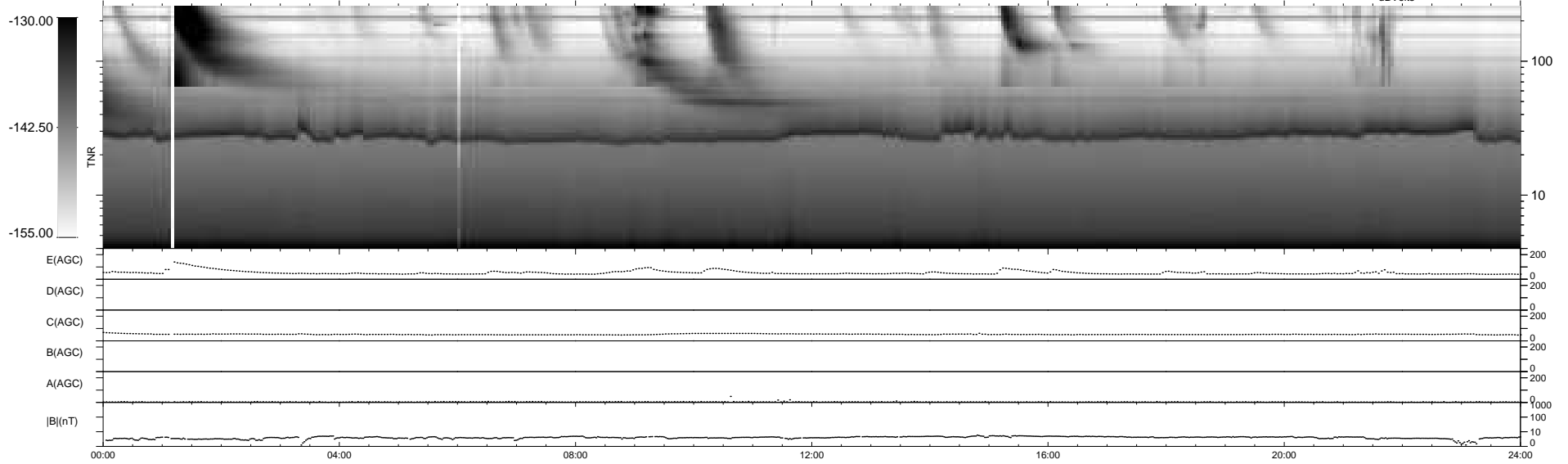
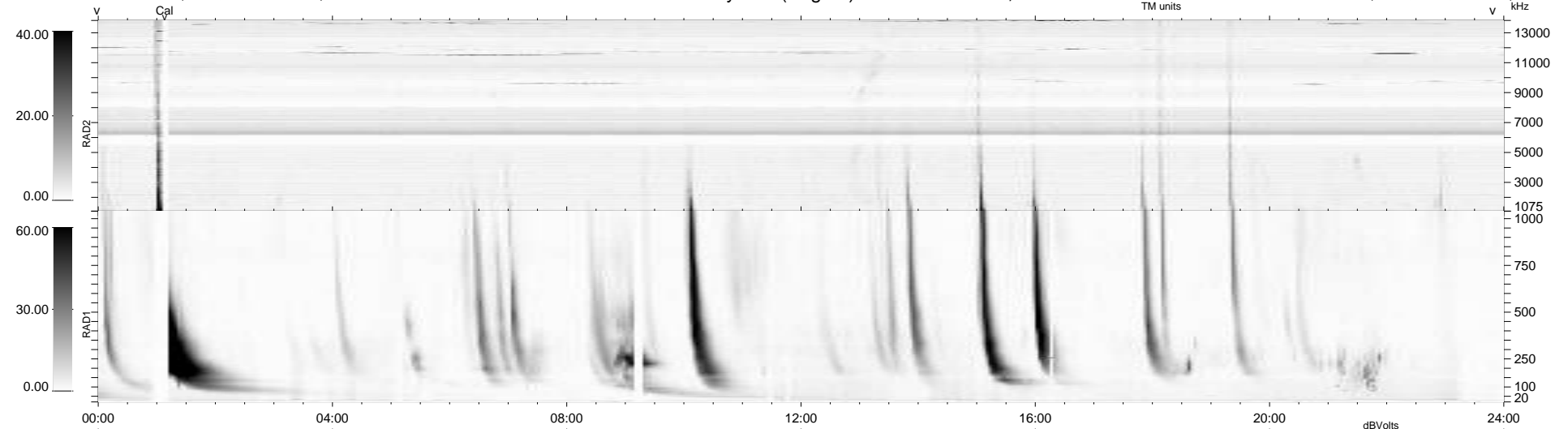
20 bad + 919 good MF/939MF projected (97%) - 0 missing MFs  
 Avg interval = 180 secs  
 Re = 224.02 (205.27, -89.71, -1.49 GSE)

windlib 2.0b

LZ version = v02

### WIND/WAVES Summary Plot (Page 1) for 25-DEC-2012, DOY = 360

DAILY 2012-12-30 11:47:03  
 Re = 222.65 (204.36, -88.34, -2.24 GSE)



RAD2  
 Antenna Ey .....  
 Mode LIN(1) .....  
 SUM/SEP SEP .....  
 Toggle OFF .....  
 RAD1  
 Antenna Ex .....  
 Mode LIS(2,4) .....  
 SUM/SEP SUM .....  
 Toggle OFF .....  
 TNR  
 Antenna ExEy .....  
 Mode A-32 .....  
 Sweep ACE .....