

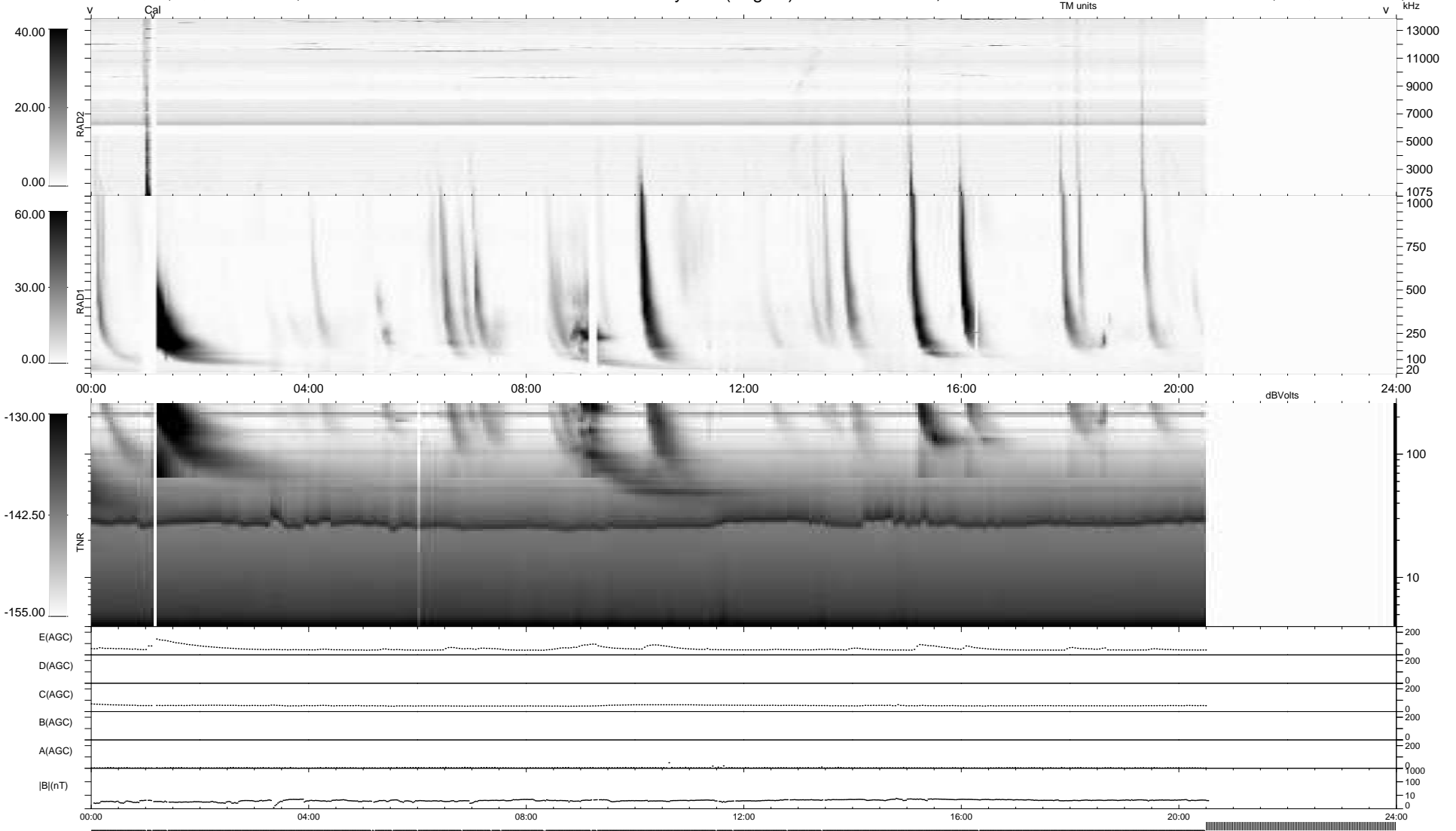
20 bad + 782 good MF/939MF projected (83%) - 137 missing MFs
 Avg interval = 180 secs
 Re = -224.02 (205.27, -89.71, -1.49 GSE)

windlib 2.0b

LZ version = v01

WIND/WAVES Summary Plot (Page 1) for 25-DEC-2012, DOY = 360

DAILY 2012-12-26 16:46:09
 Re = 222.65 (204.36, -88.34, -2.24 GSE)



RAD2 Antenna Ey
 Mode LIN(1)
 SUM/SEP SEP
 Toggle OFF
 RAD1 Antenna Ex
 Mode LIS(2,4)
 SUM/SEP SUM
 Toggle OFF
 TNR Antenna ExEy
 Mode A-32
 Sweep ACE