

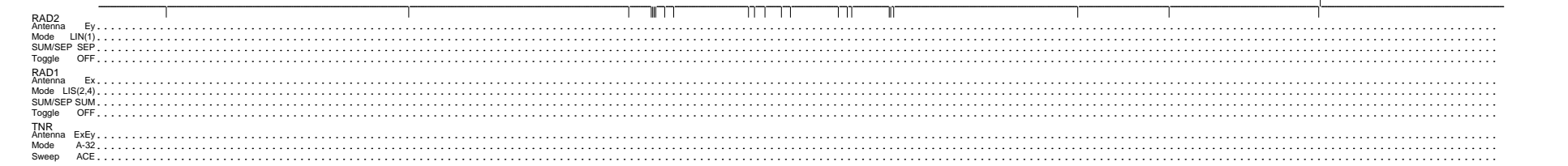
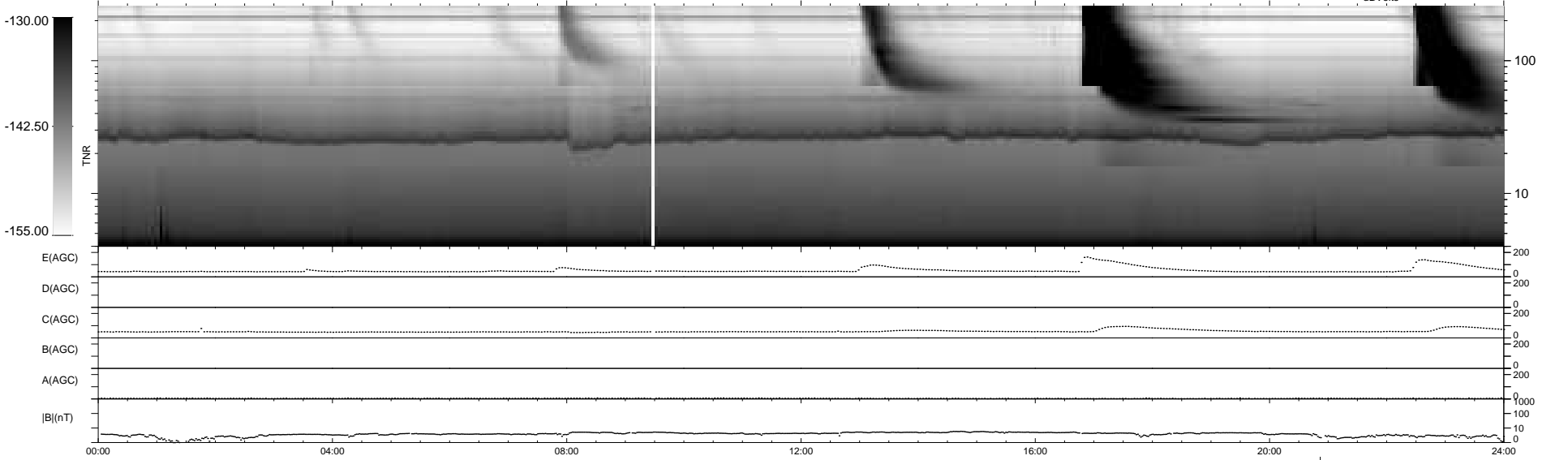
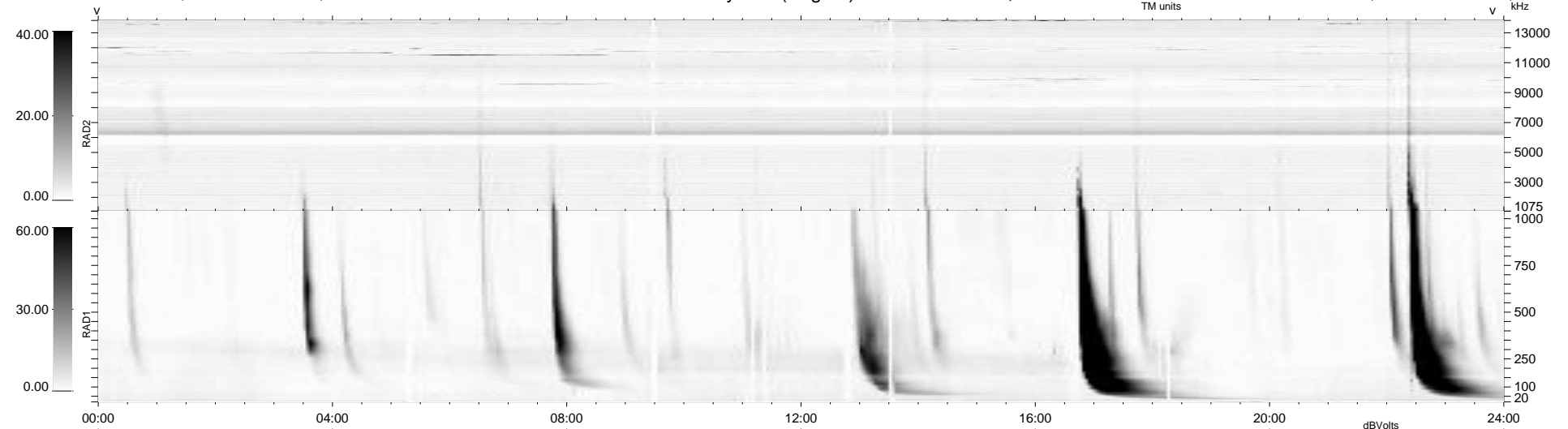
23 bad + 915 good MF/939MF projected (97%) - 1 missing MF
 Avg interval = 180 secs
 Re = 225.41 (206.23, -90.98, -0.74 GSE)

windlib 2.0b

LZ version = v02

WIND/WAVES Summary Plot (Page 1) for 24-DEC-2012, DOY = 359

DAILY 2012-12-30 11:46:08
 Re = 224.03 (205.27, -89.72, -1.48 GSE)



RAD2 Antenna Ey
 Mode LIN(1)
 SUM/SEP SEP
 Toggle OFF
 RAD1 Antenna Ex
 Mode LIS(2,4)
 SUM/SEP SUM
 Toggle OFF
 TNR Antenna ExEy
 Mode A-32
 Sweep ACE