

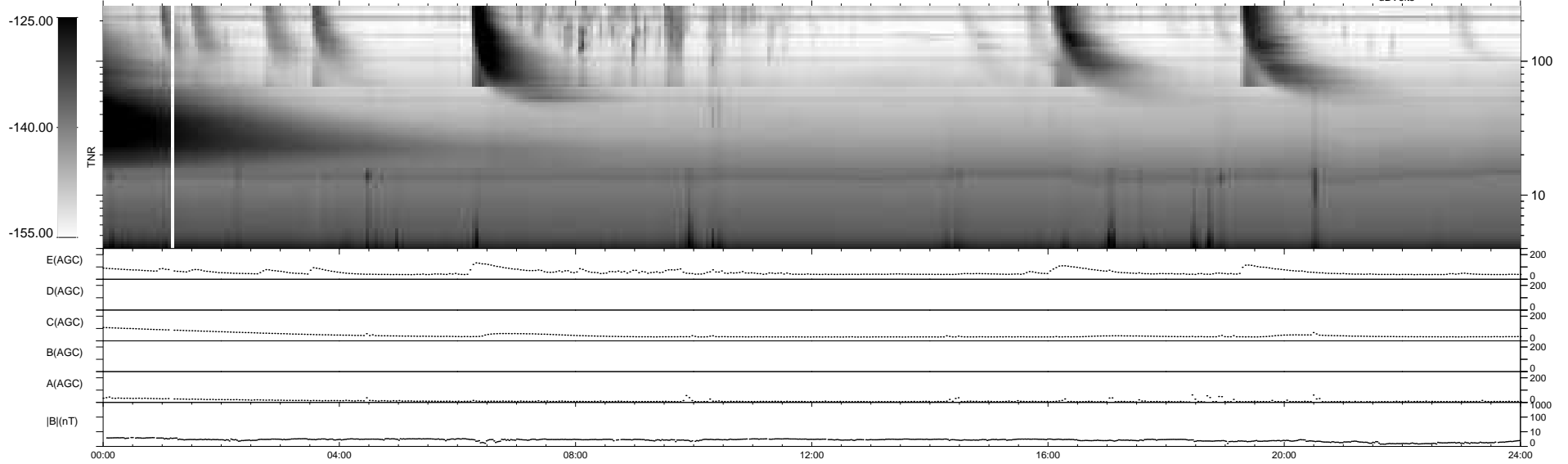
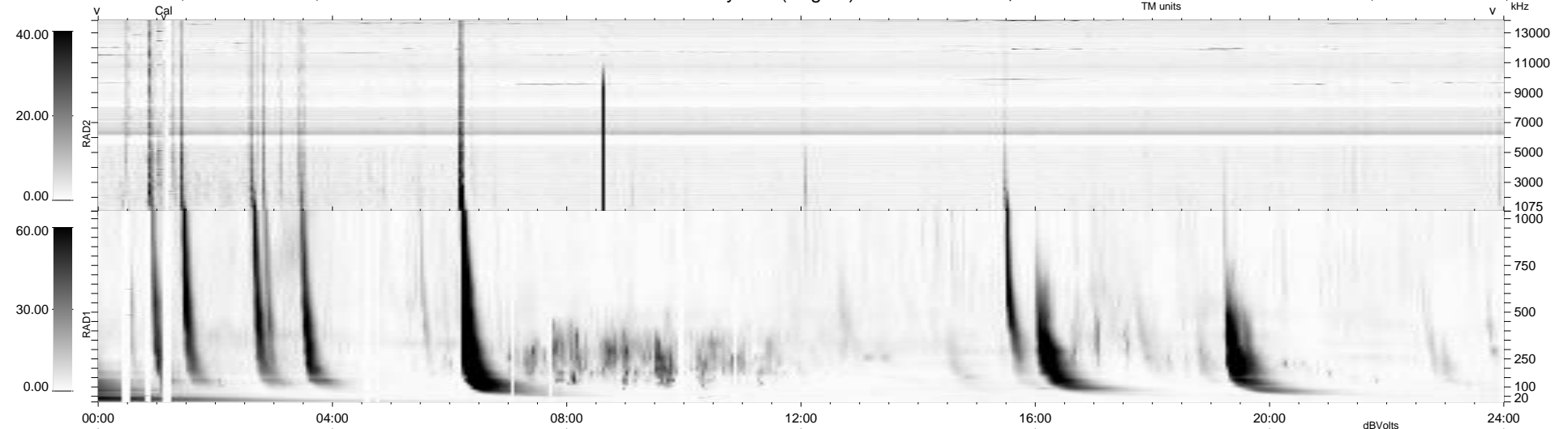
24 bad + 915 good MF/939MF projected (97%) - 0 missing MFs  
 Avg interval = 180 secs  
 Re = -229.65 (209.44, -94.18, 1.51 GSE)

windlib 2.0b

LZ version = v01

### WIND/WAVES Summary Plot (Page 1) for 21-DEC-2012, DOY = 356

DAILY 2012-12-22 19:46:07  
 Re = 228.24 (208.33, -93.22, 0.77 GSE)



RAD2  
 Antenna Ey  
 Mode LIN(1)  
 SUM/SEP SEP  
 Toggle OFF

RAD1  
 Antenna Ex  
 Mode LIS(2,4)  
 SUM/SEP SUM  
 Toggle OFF

TNR  
 Antenna ExEy  
 Mode A-32  
 Sweep ACE