

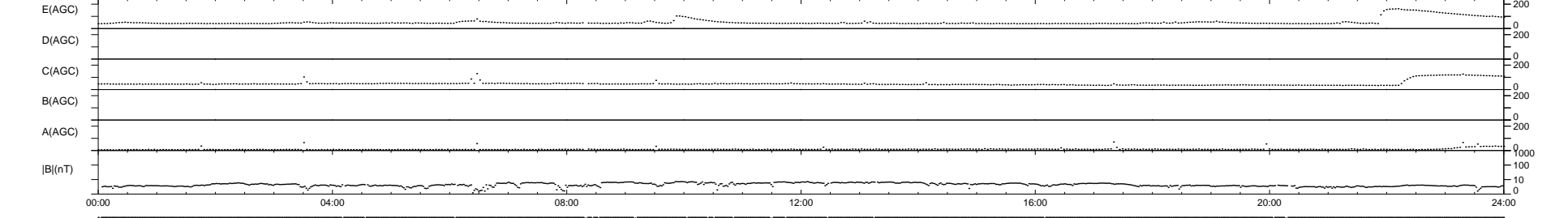
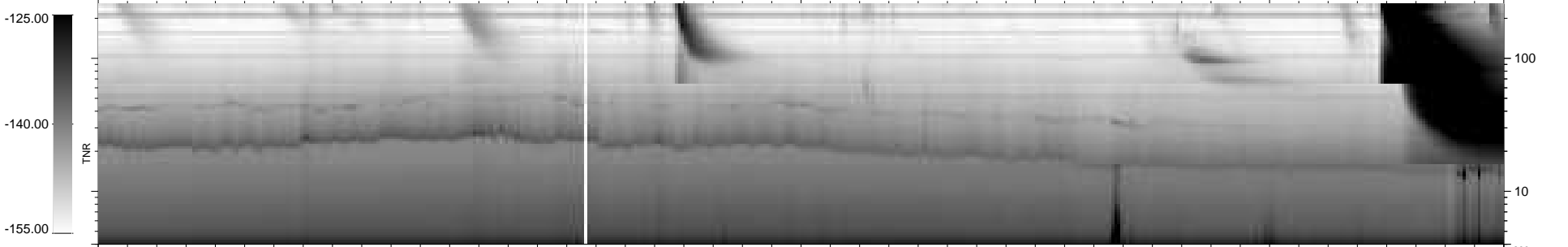
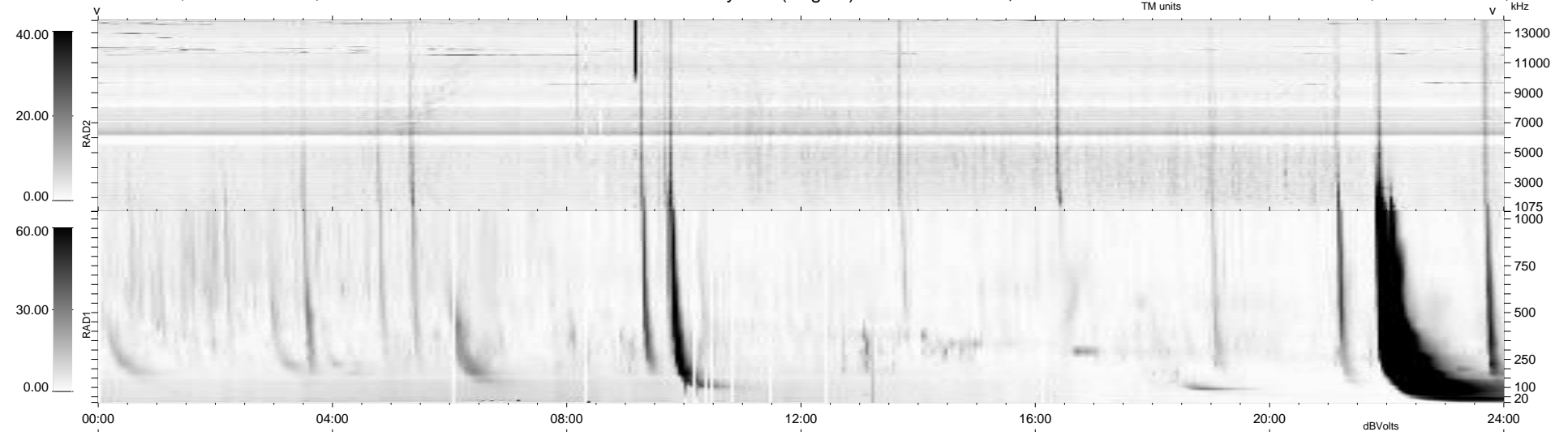
23 bad + 917 good MF/940MF projected (97%) - 0 missing MFs
 Avg interval = 180 secs
 Re = -231.06 (210.59, -95.06, 2.26 GSE)

windlib 2.0b

LZ version = v02

WIND/WAVES Summary Plot (Page 1) for 20-DEC-2012, DOY = 355

DAILY 2012-12-30 13:46:07
 Re = 229.66 (209.45, -94.19, 1.52 GSE)



RAD2
 Antenna Ey
 Mode LIN(1)
 SUM/SEP SEP
 Toggle OFF

RAD1
 Antenna
 Mode
 SUM/SEP
 Toggle

TNR
 Antenna ExEy
 Mode A-32
 Sweep ACE