

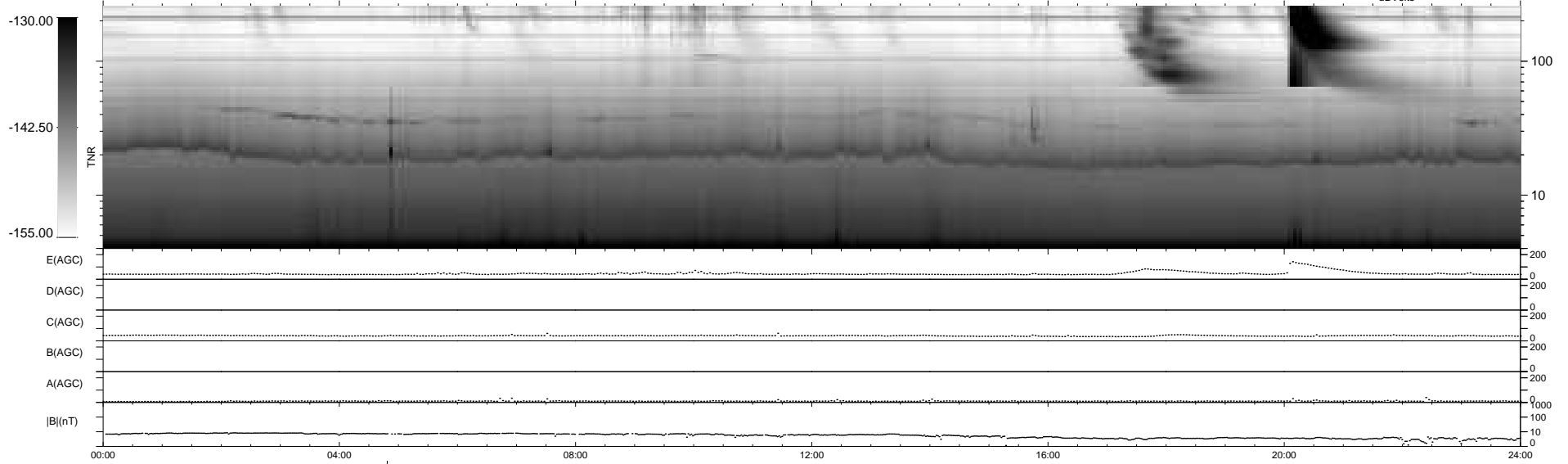
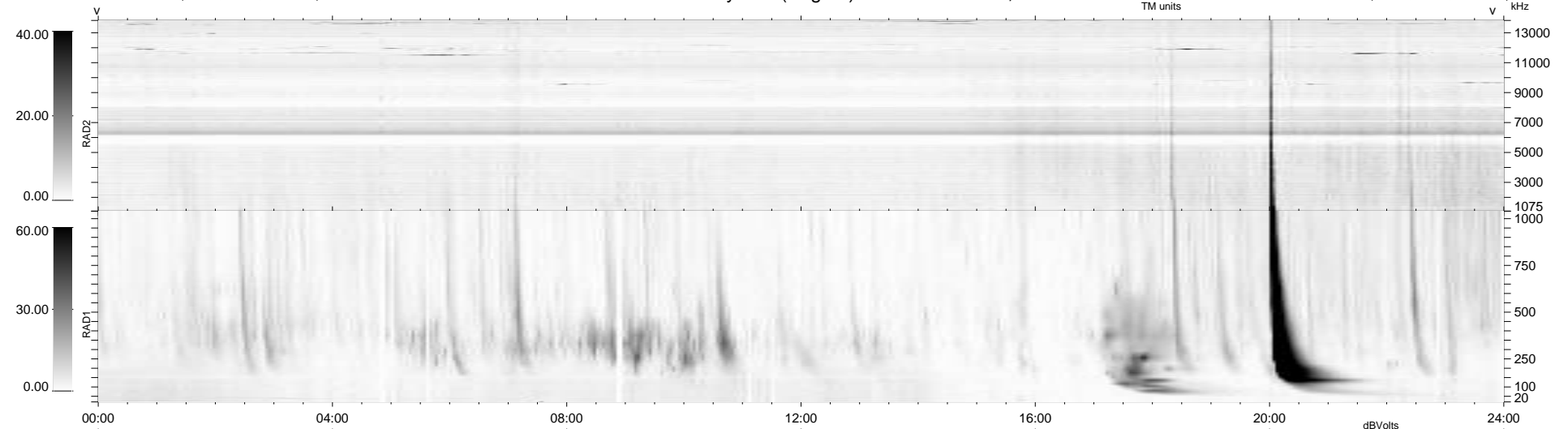
21 bad + 917 good MF/939MF projected (97%) - 1 missing MF  
 Avg interval = 180 secs  
 Re = 233.86 (212.97, -96.54, 3.73 GSE)

windlib 2.0b

LZ version = v02

### WIND/WAVES Summary Plot (Page 1) for 18-DEC-2012, DOY = 353

DAILY 2012-12-20 14:46:08  
 Re = 232.48 (211.78, -95.85, 3.00 GSE)



RAD2  
 Antenna Ey  
 Mode LIN(1)  
 SUM/SEP SEP  
 Toggle OFF

RAD1  
 Antenna Ex  
 Mode LIS(2,4)  
 SUM/SEP SUM  
 Toggle OFF

TNR  
 Antenna ExEy  
 Mode A-32  
 Sweep ACE