

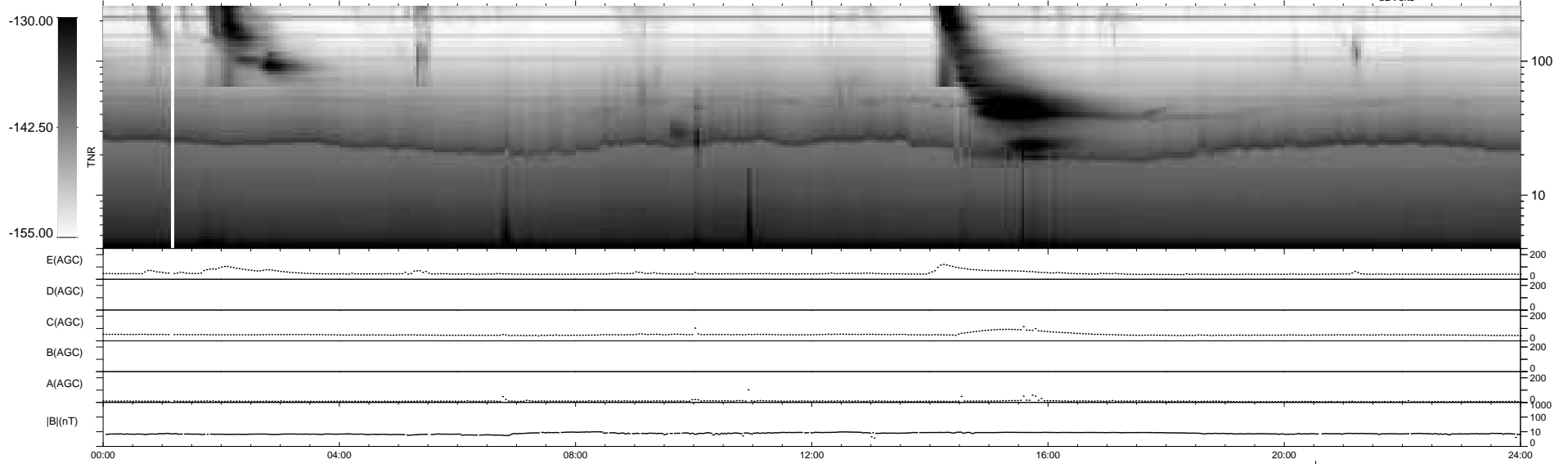
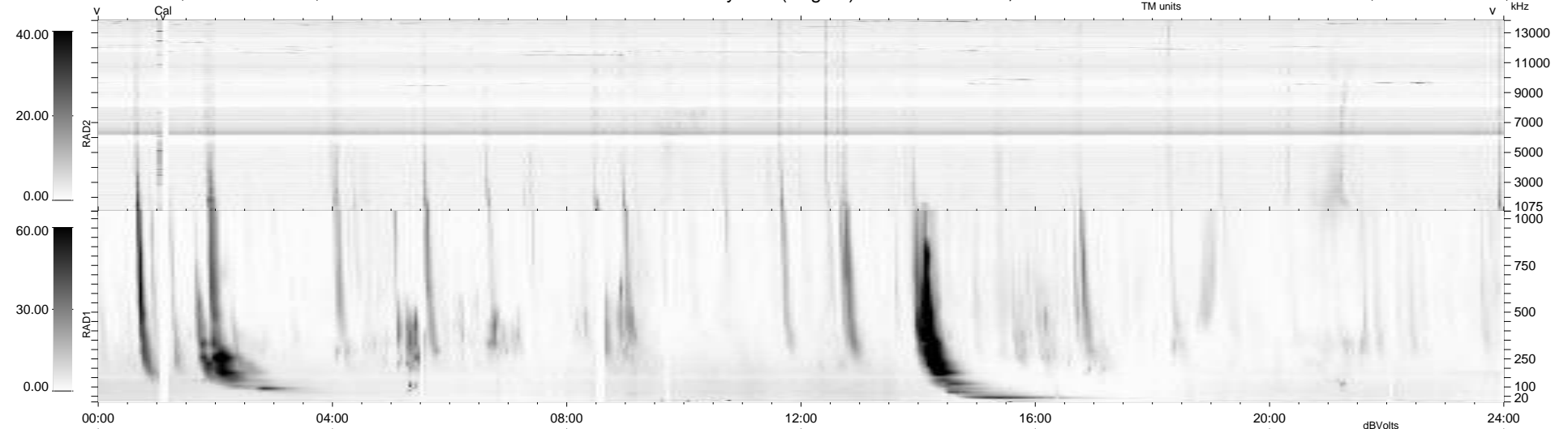
21 bad + 917 good MF/939MF projected (97%) - 1 missing MF  
 Avg interval = 180 secs  
 Re = 235.22 (214.18, -97.13, 4.45 GSE)

windlib 2.0b

LZ version = v01

### WIND/WAVES Summary Plot (Page 1) for 17-DEC-2012, DOY = 352

DAILY 2012-12-18 19:46:07  
 Re = 233.87 (212.98, -96.54, 3.73 GSE)



```

RAD2
Antenna Ey .....
Mode LIN(1) .....
SUM/SEP SEP .....
Toggle OFF .....

RAD1
Antenna Ex .....
Mode LIS(2,4) .....
SUM/SEP SUM .....
Toggle OFF .....

TNR
Antenna ExEy .....
Mode A-32 .....
Sweep ACE .....
  
```