

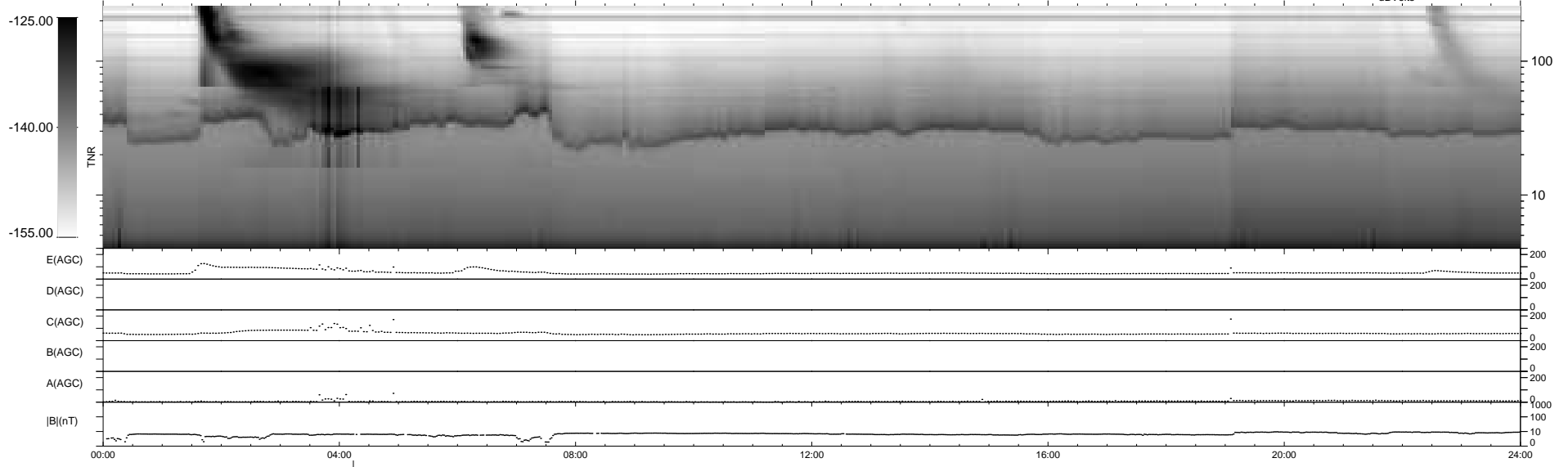
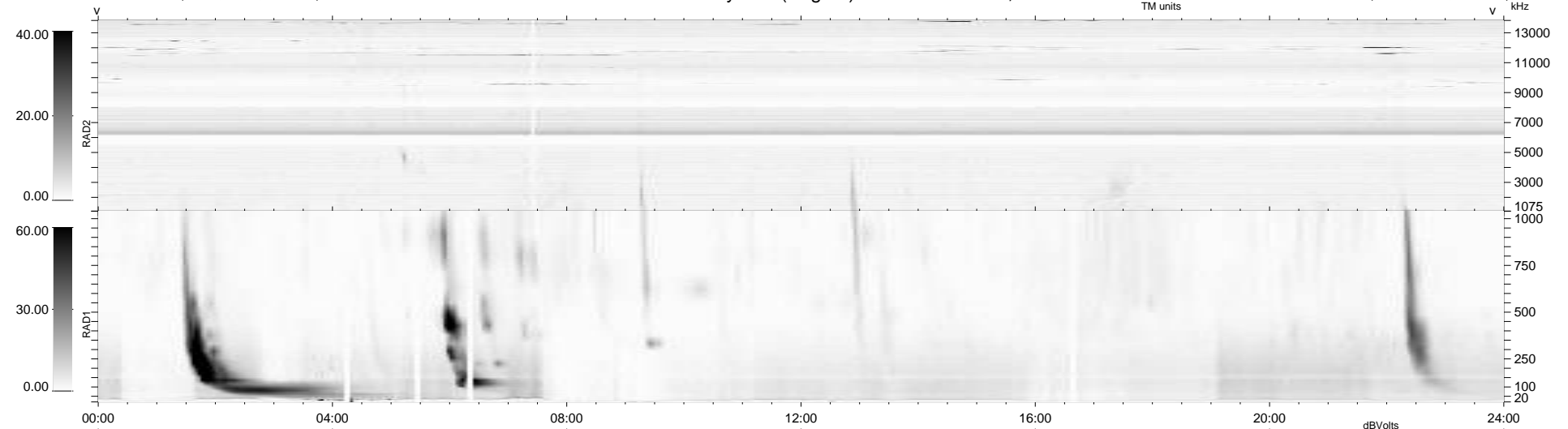
16 bad + 922 good MF/939MF projected (98%) - 1 missing MF  
Avg interval = 180 secs  
Re = 239.06 (217.82, -98.30, 6.57 GSE)

windlib 2.0b

LZ version = v01

### WIND/WAVES Summary Plot (Page 1) for 14-DEC-2012, DOY = 349

DAILY 2012-12-15 17:46:08  
Re = 237.84 (216.62, -98.02, 5.88 GSE)



RAD2  
Antenna Ey  
Mode LIN(1)  
SUM/SEP SEP  
Toggle OFF

RAD1  
Antenna Ex  
Mode LIS(2,4)  
SUM/SEP SUM  
Toggle OFF

TNR  
Antenna ExEy  
Mode A-32  
Sweep ACE