

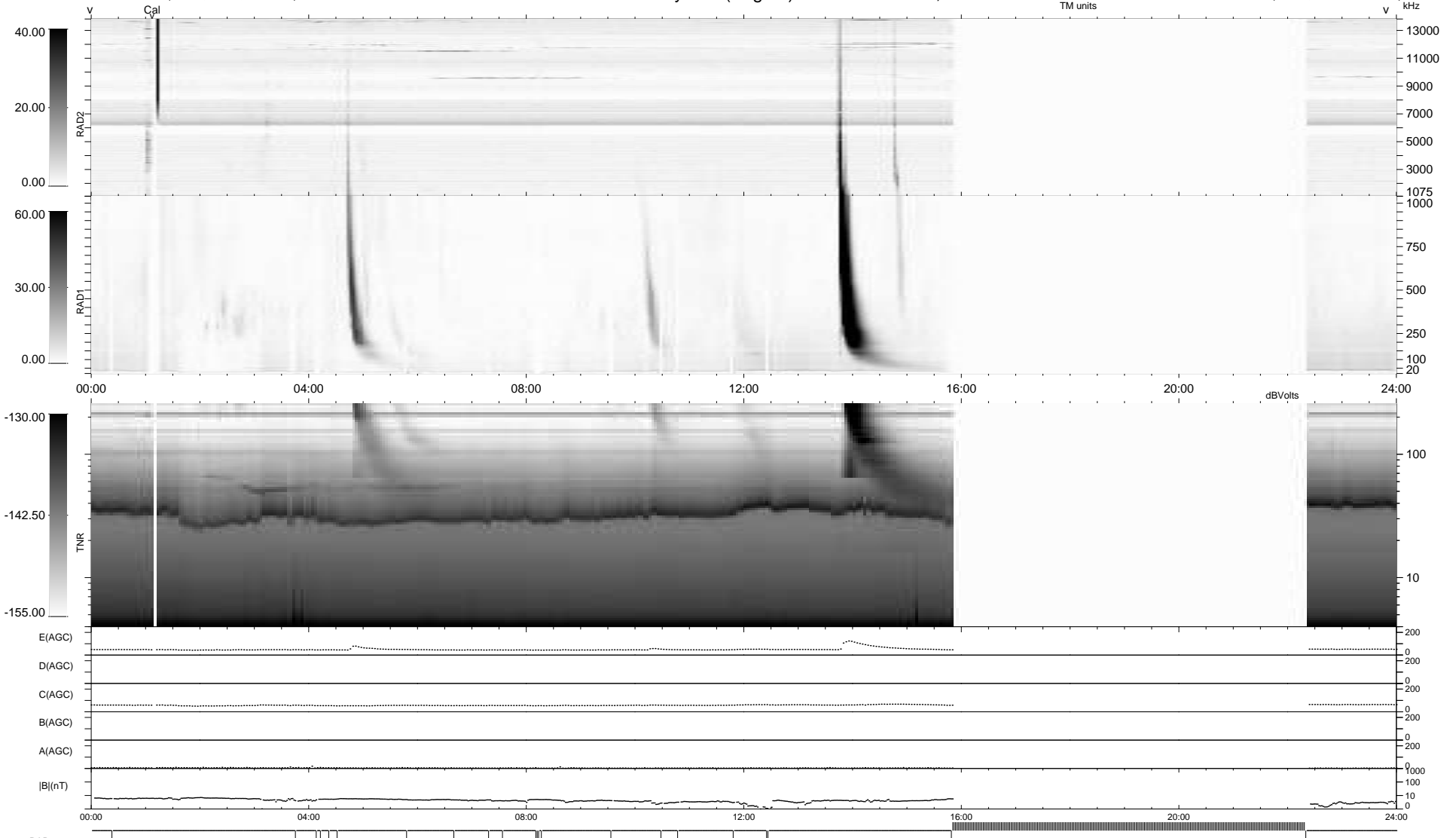
22 bad + 663 good MF/939MF projected (70%) - 254 missing MFs
 Avg interval = 180 secs
 Re = -240.22 (219.00, -98.46, 7.25 GSE)

windlib 2.0b

LZ version = v01

WIND/WAVES Summary Plot (Page 1) for 13-DEC-2012, DOY = 348

DAILY 2012-12-14 21:46:07
 Re = 239.07 (217.82, -98.30, 6.57 GSE)



RAD2
 Antenna Ey
 Mode LIN(1)
 SUM/SEP SEP
 Toggle OFF

RAD1
 Antenna Ex
 Mode LIS(2,4)
 SUM/SEP SUM
 Toggle OFF

TNR
 Antenna ExEy
 Mode A-32
 Sweep ACE