

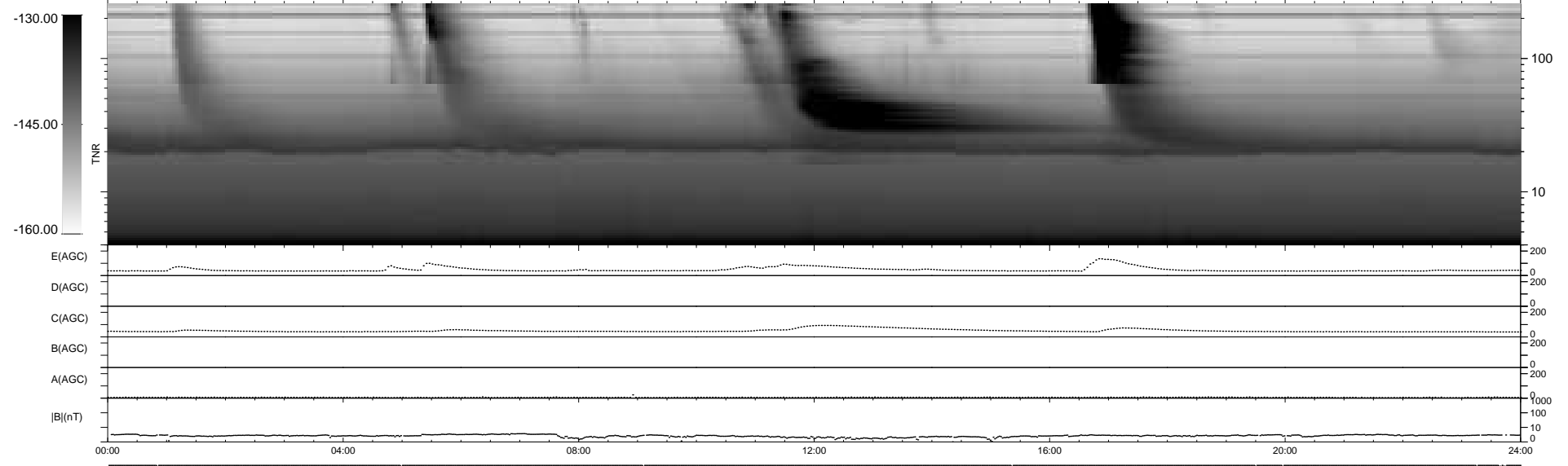
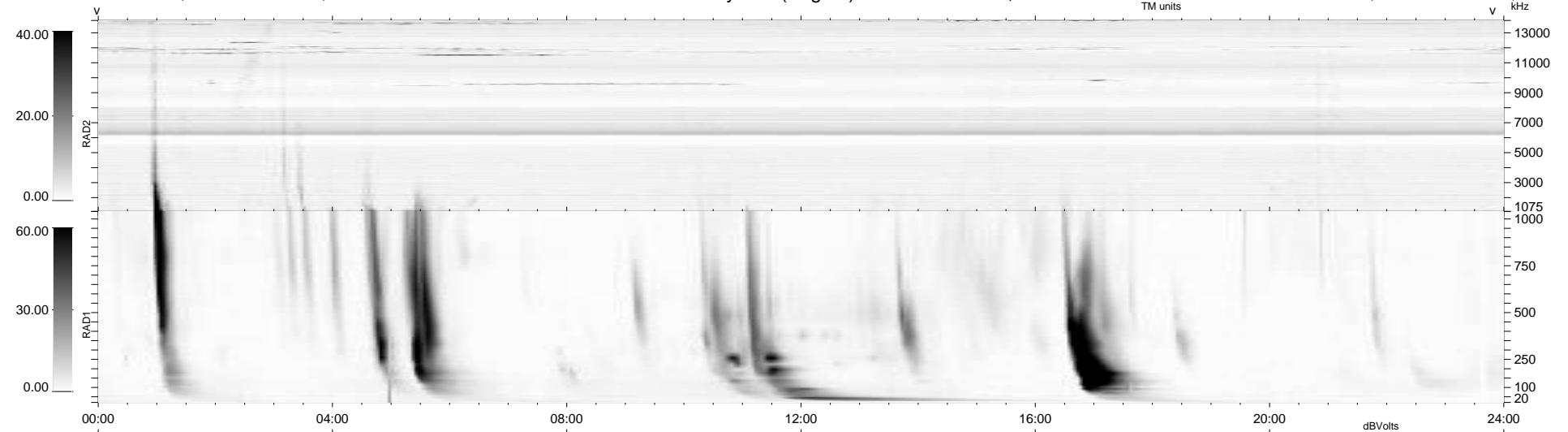
11 bad + 928 good MF/939MF projected (98%) - 0 missing MFs
 Avg interval = 180 secs
 Re = 246.50 (226.89, -95.63, 11.78 GSE)

windlib 2.0b

LZ version = v01

WIND/WAVES Summary Plot (Page 1) for 06-DEC-2012, DOY = 341

DAILY 2012-12-07 10:46:08
 Re = 245.79 (225.78, -96.48, 11.17 GSE)



RAD2 Antenna Ey
 Mode LIN(1)
 SUM/SEP SEP
 Toggle OFF
 RAD1 Antenna Ex
 Mode LIS(2,4)
 SUM/SEP SUM
 Toggle OFF
 TNR Antenna ExEy
 Mode A-32
 Sweep ACE