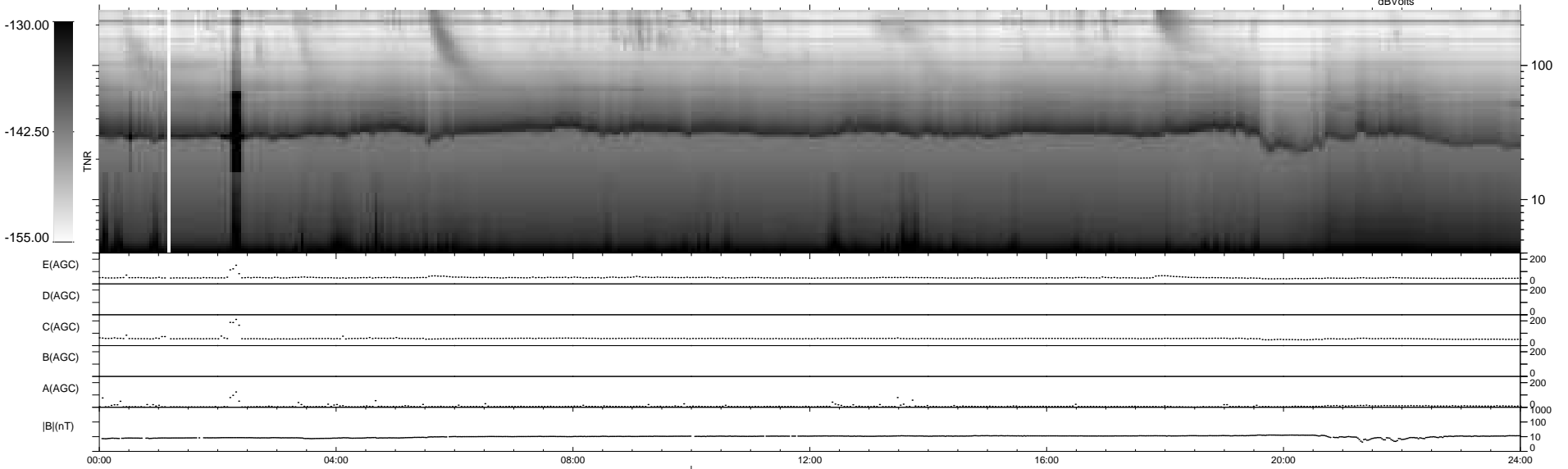
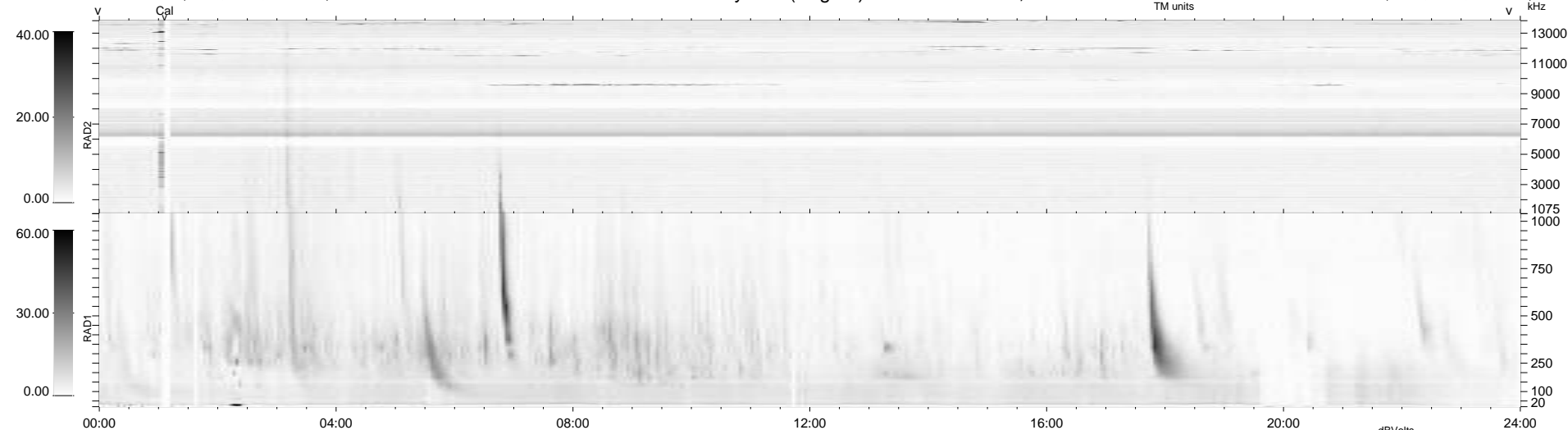


14 bad + 924 good MF/939MF projected (98%) - 1 missing MF
 Avg interval = 180 secs
 Re = 248.42 (230.29, -92.17, 13.56 GSE)

windlib 2.0b LZ version = v01
 DAILY 2012-12-04 17:46:07
 Re = 247.81 (229.14, -93.46, 12.98 GSE)

WIND/WAVES Summary Plot (Page 1) for 03-DEC-2012, DOY = 338



```

RAD2
Antenna Ey .....
Mode LIN(1) .....
SUM/SEP SEP .....
Toggle OFF .....

RAD1
Antenna Ex .....
Mode LIS(2,4) .....
SUM/SEP SUM .....
Toggle OFF .....

TNR
Antenna ExEy .....
Mode A-32 .....
Sweep ACE .....
  
```