

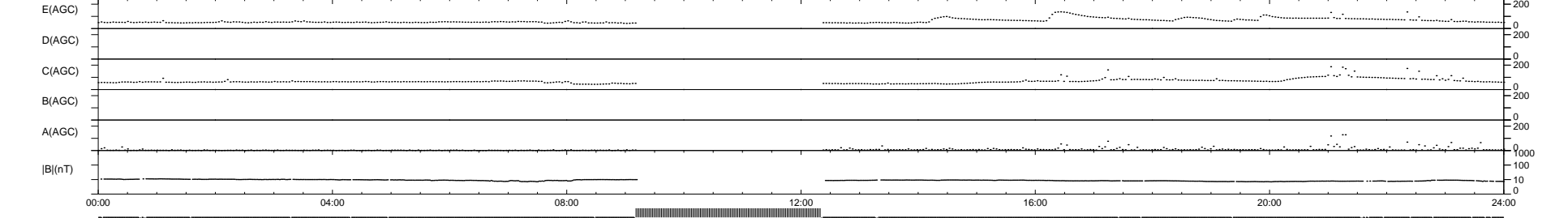
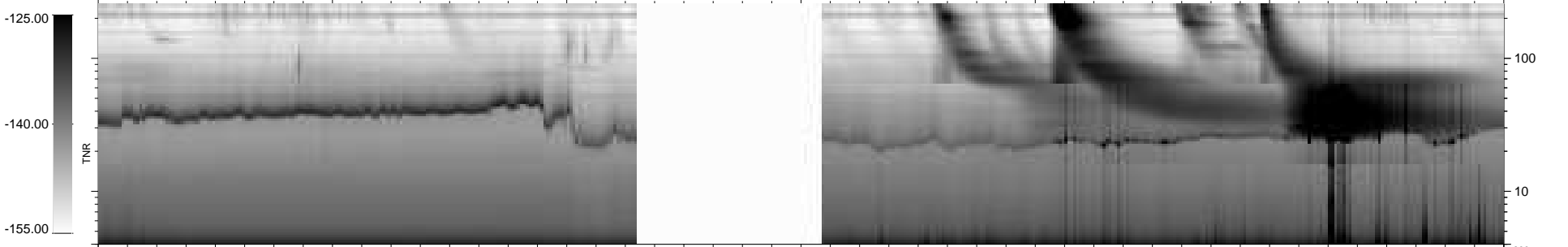
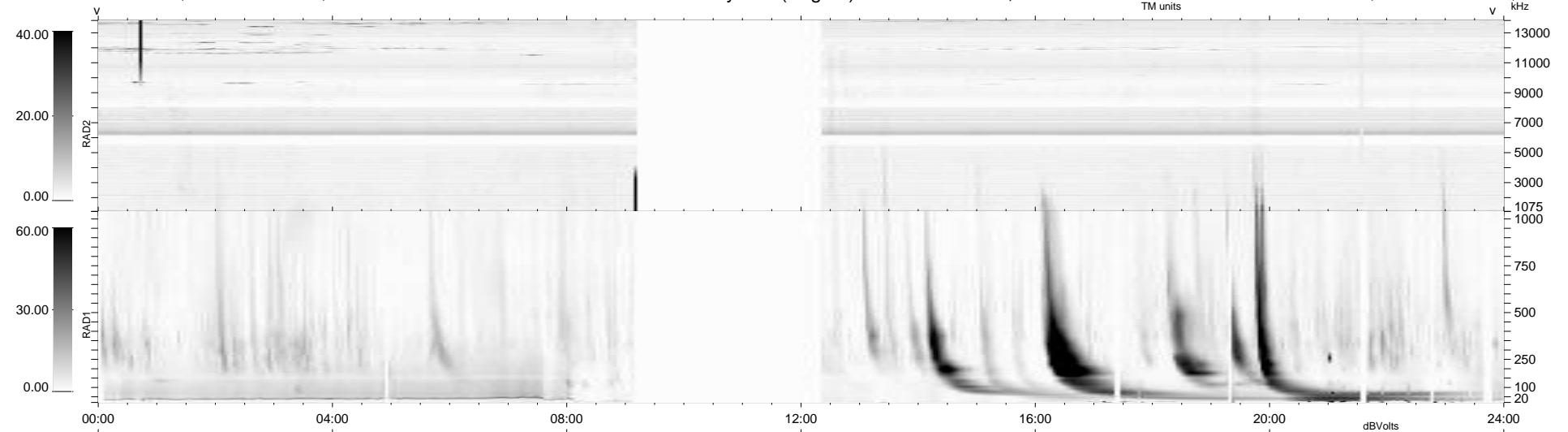
27 bad + 788 good MF/939MF projected (83%) - 124 missing MFs
 Avg interval = 180 secs
 Re = 249.01 (231.45, -90.74, 14.14 GSE)

windlib 2.0b

LZ version = v01

WIND/WAVES Summary Plot (Page 1) for 02-DEC-2012, DOY = 337

DAILY 2012-12-03 18:46:06
 Re = 248.42 (230.29, -92.16, 13.57 GSE)



RAD2
 Antenna Ey
 Mode LIN(1)
 SUM/SEP SEP
 Toggle OFF

RAD1
 Antenna
 Mode
 SUM/SEP
 Toggle

TNR
 Antenna ExEy
 Mode A-32
 Sweep ACE