

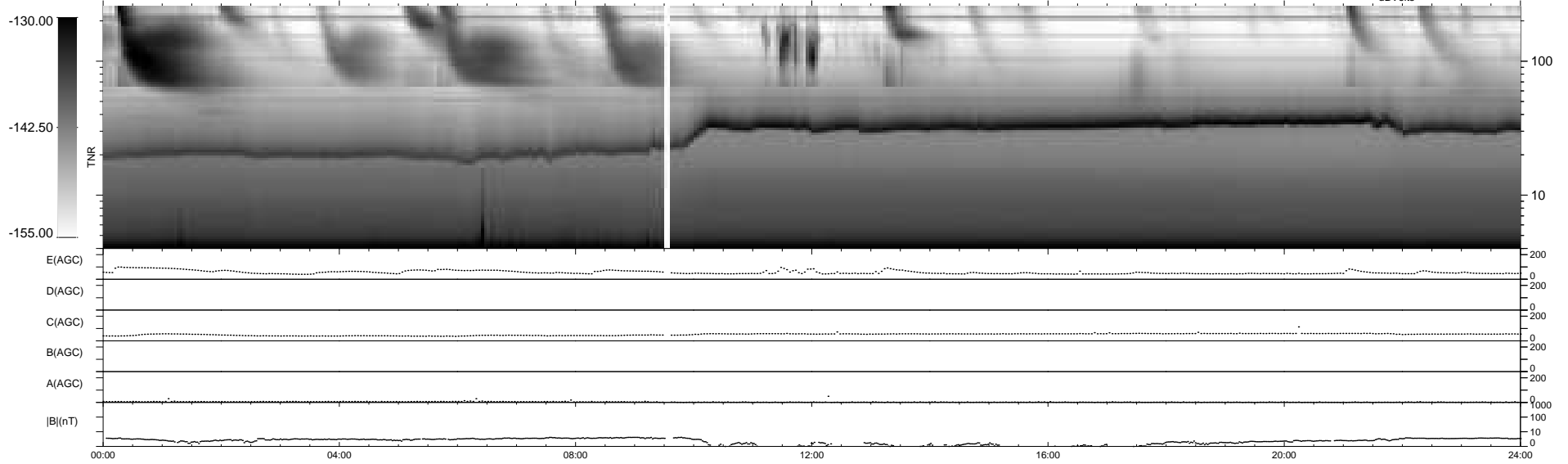
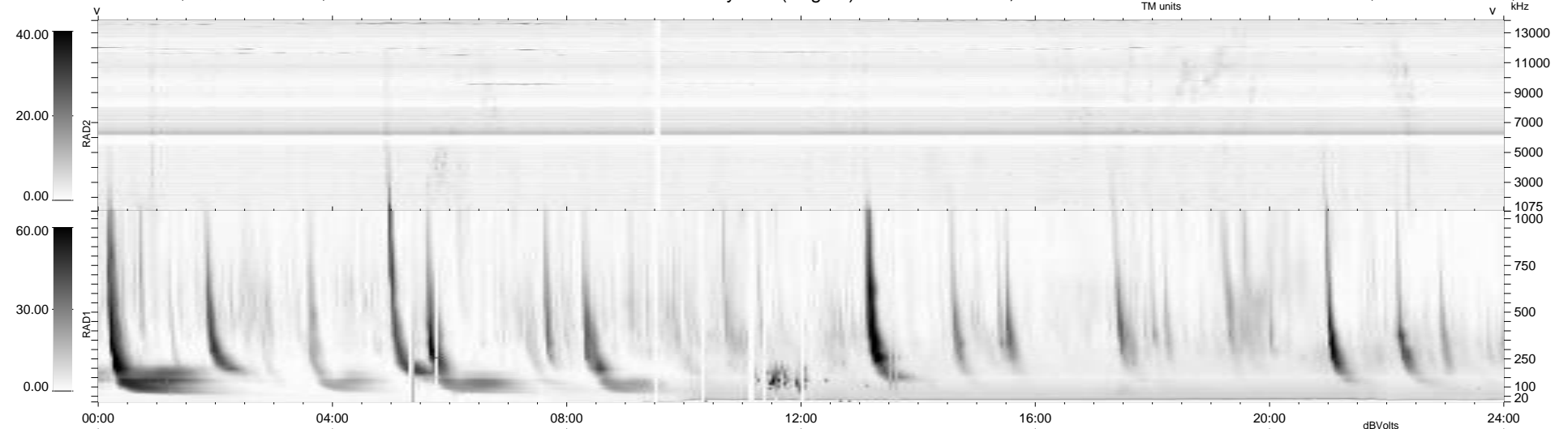
22 bad + 917 good MF/939MF projected (97%) - 0 missing MFs  
 Avg interval = 180 secs  
 Re = 250.14 (233.84, -87.50, 15.26 GSE)

windlib 2.0b

LZ version = v01

WIND/WAVES Summary Plot (Page 1) for 30-NOV-2012, DOY = 335

DAILY 2012-12-01 10:46:07  
 Re = 249.59 (232.65, -89.17, 14.71 GSE)



RAD2  
 Antenna Ey .....  
 Mode LIN(1) .....  
 SUM/SEP SEP .....  
 Toggle OFF .....  
 RAD1  
 Antenna Ex .....  
 Mode LIS(2,4) .....  
 SUM/SEP SUM .....  
 Toggle OFF .....  
 TNR  
 Antenna ExEy .....  
 Mode A-32 .....  
 Sweep ACE .....