

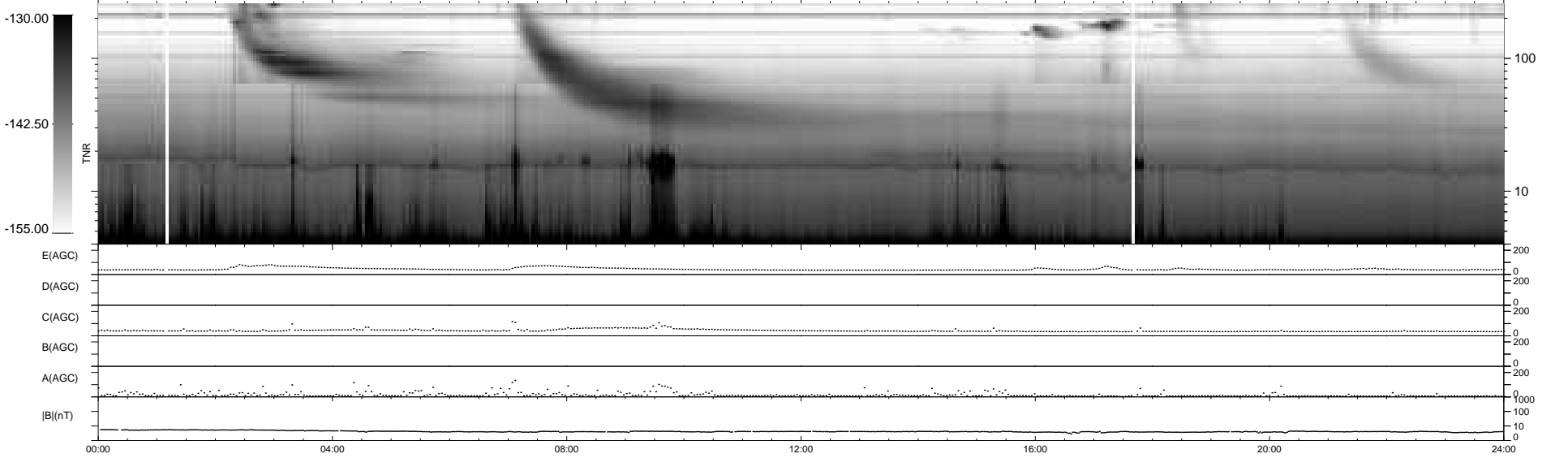
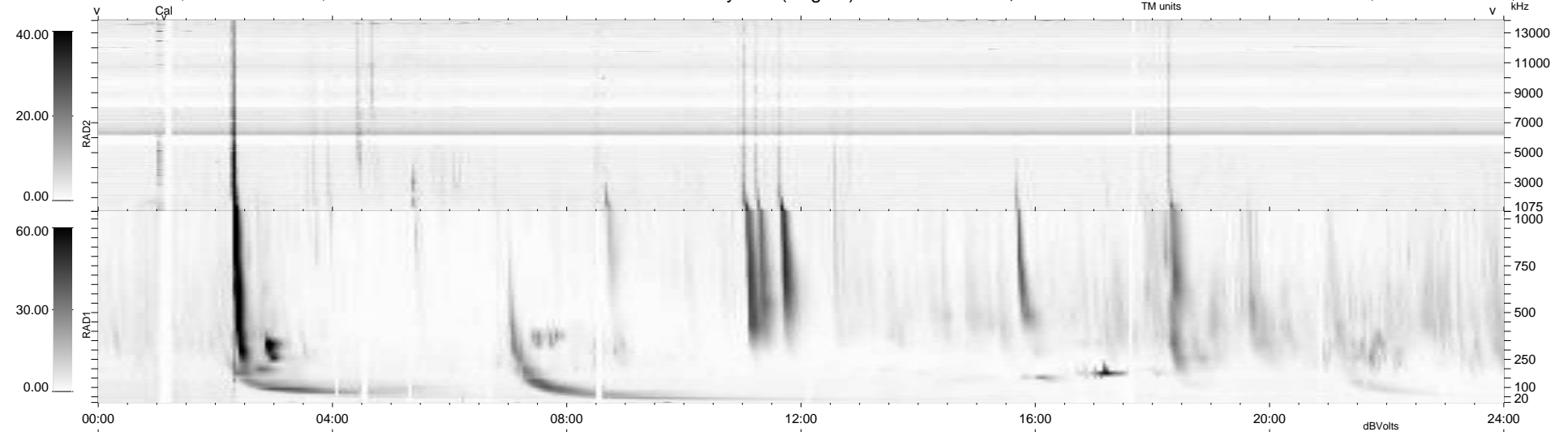
26 bad + 914 good MF/940MF projected (97%) - 0 missing MFs
 Avg interval = 180 secs
 Re = -251.81 (237.56, -81.80, 16.83 GSE)

windlib 2.0b

LZ version = v01

WIND/WAVES Summary Plot (Page 1) for 27-NOV-2012, DOY = 332

DAILY 2012-11-28 10:46:06
 Re = 251.26 (236.31, -83.79, 16.32 GSE)



```

RAD2
Antenna Ey .....
Mode LIN(1) .....
SUM/SEP SEP .....
Toggle OFF .....

RAD1
Antenna Ex .....
Mode LIS(2,4) .....
SUM/SEP SUM .....
Toggle OFF .....

TNR
Antenna ExEy .....
Mode A-32 .....
Sweep ACE .....
  
```