

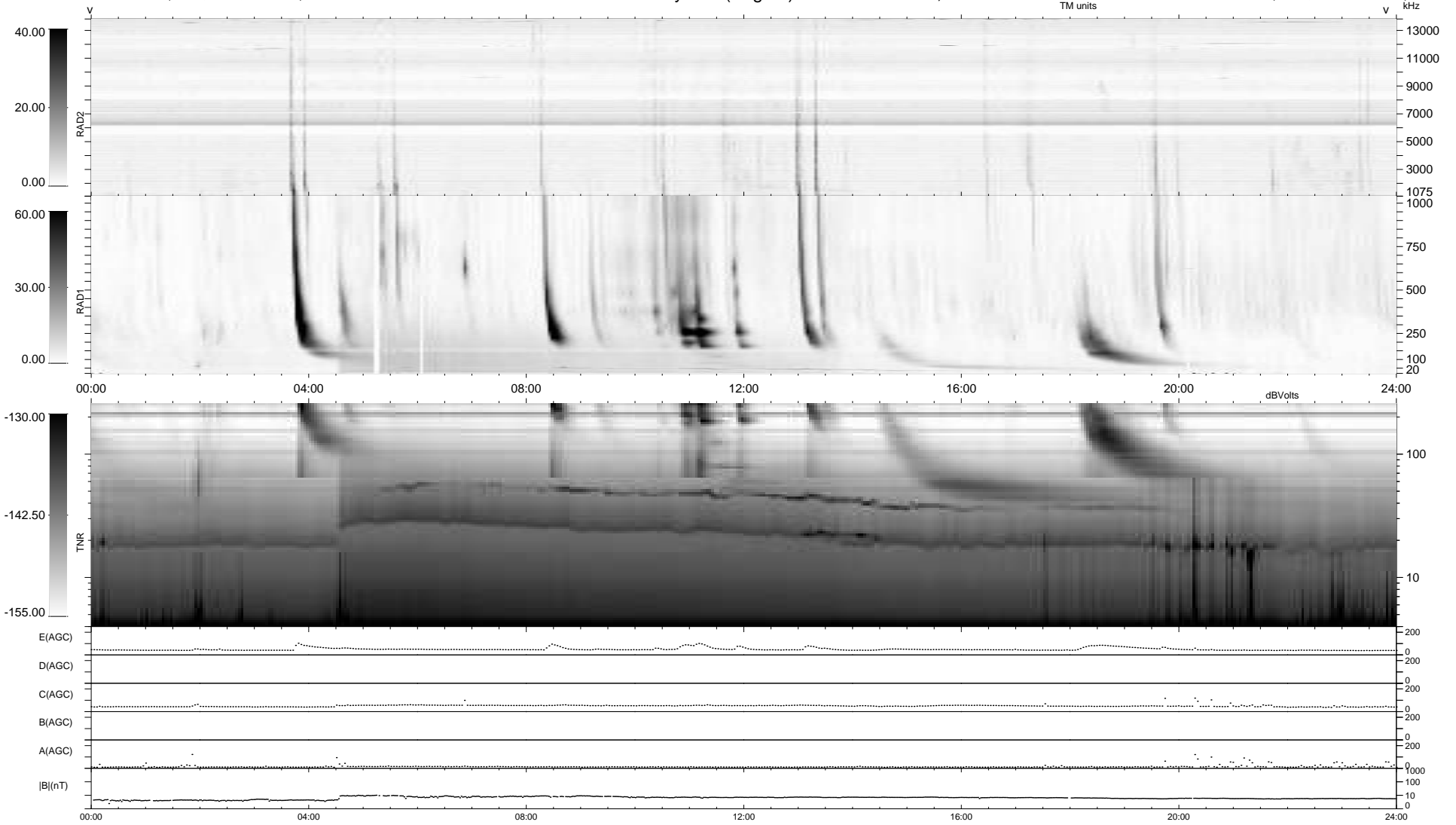
18 bad + 921 good MF/939MF projected (98%) - 0 missing MFs  
 Avg interval = 180 secs  
 Re = 252.36 (238.82, -79.70, 17.31 GSE)

windlib 2.0b

LZ version = v02

### WIND/WAVES Summary Plot (Page 1) for 26-NOV-2012, DOY = 331

DAILY 2012-11-29 15:46:06  
 Re = 251.81 (237.56, -81.79, 16.83 GSE)



RAD2 Antenna Ey .....  
 Mode LIN(1) .....  
 SUM/SEP SEP .....  
 Toggle OFF .....  
 RAD1 Antenna Ex .....  
 Mode LIS(2,4) .....  
 SUM/SEP SUM .....  
 Toggle OFF .....  
 TNR Antenna ExEy .....  
 Mode A-32 .....  
 Sweep ACE .....