

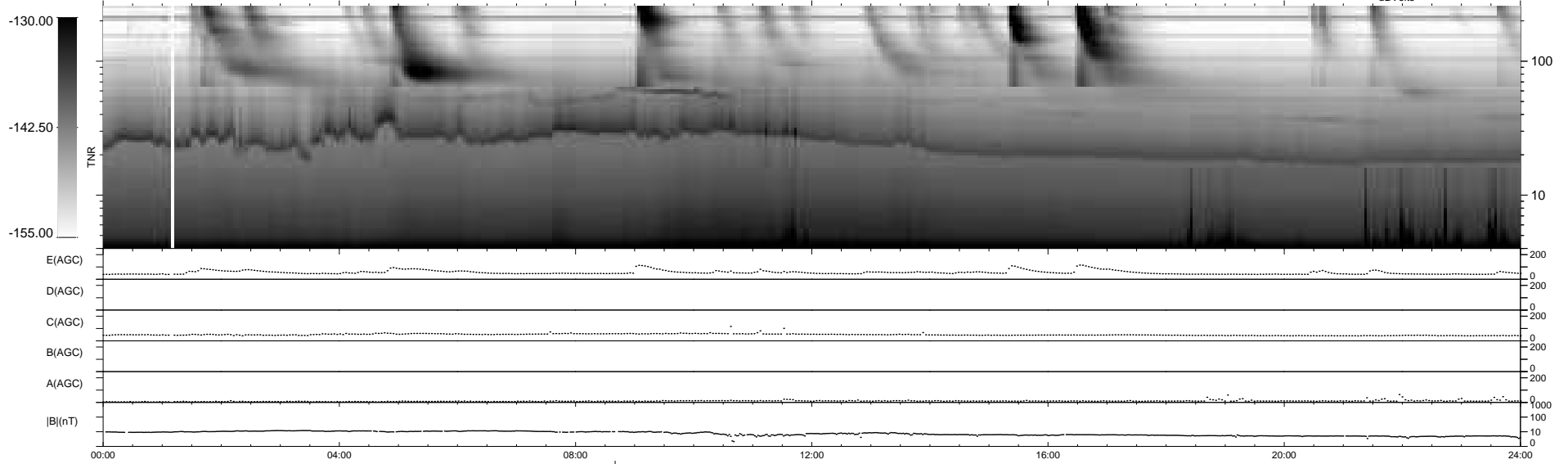
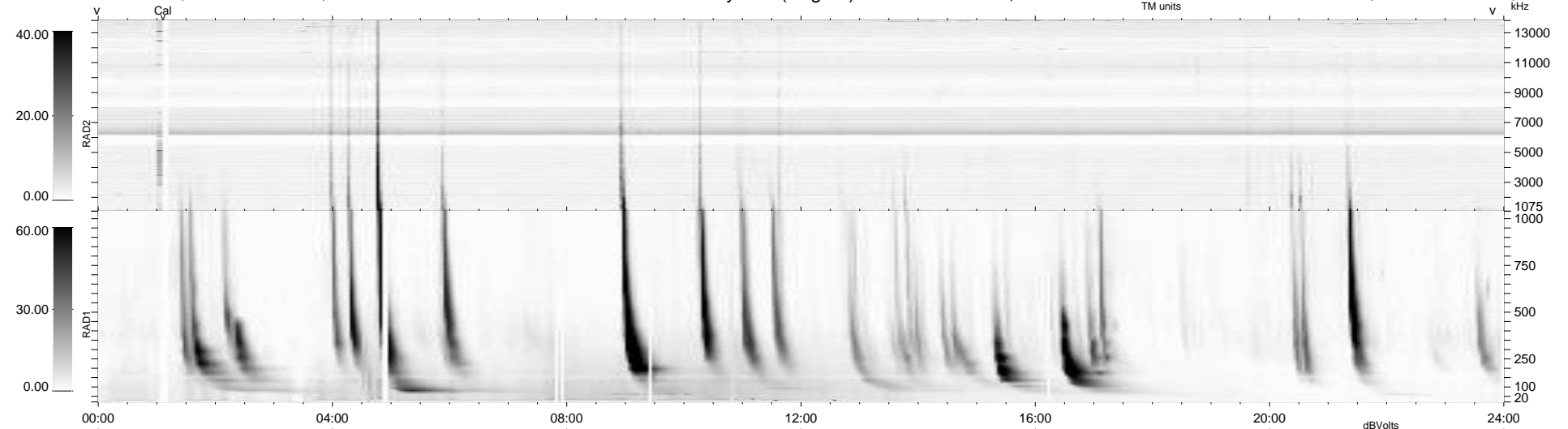
18 bad + 920 good MF/939MF projected (97%) - 1 missing MF  
 Avg interval = 180 secs  
 Re = -252.92 (240.09, -77.52, 17.78 GSE)

windlib 2.0b

LZ version = v01

### WIND/WAVES Summary Plot (Page 1) for 25-NOV-2012, DOY = 330

DAILY 2012-11-26 17:46:05  
 Re = 252.37 (238.83, -79.69, 17.32 GSE)



RAD2  
 Antenna Ey  
 Mode LIN(1)  
 SUM/SEP SEP  
 Toggle OFF

RAD1  
 Antenna Ex  
 Mode LIS(2,4)  
 SUM/SEP SUM  
 Toggle OFF

TNR  
 Antenna ExEy  
 Mode A-32  
 Sweep ACE