

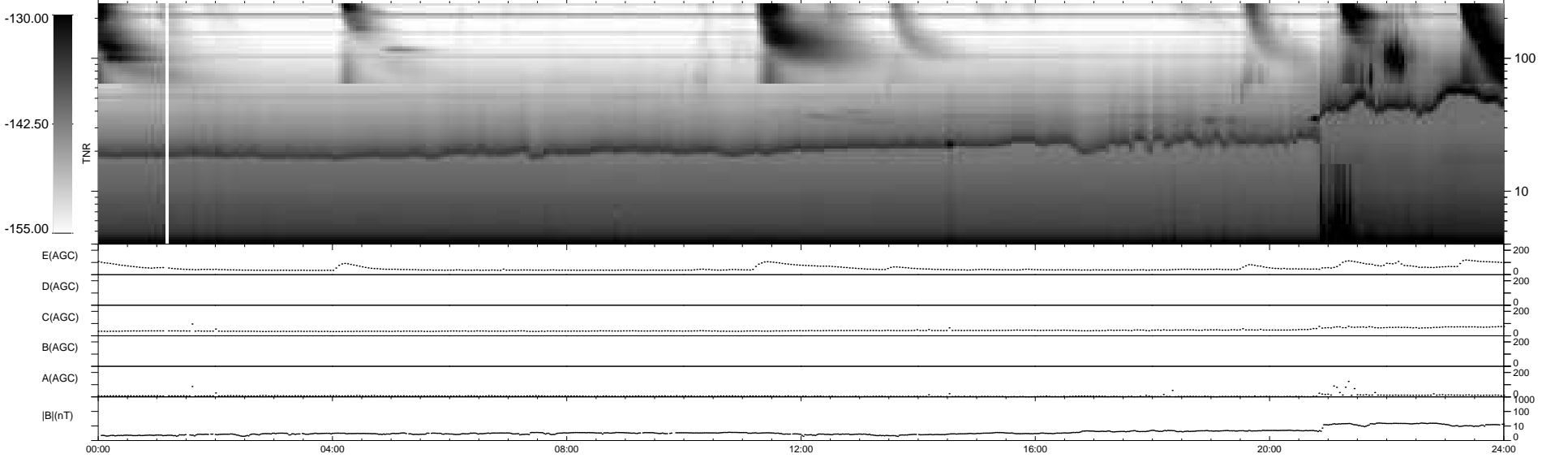
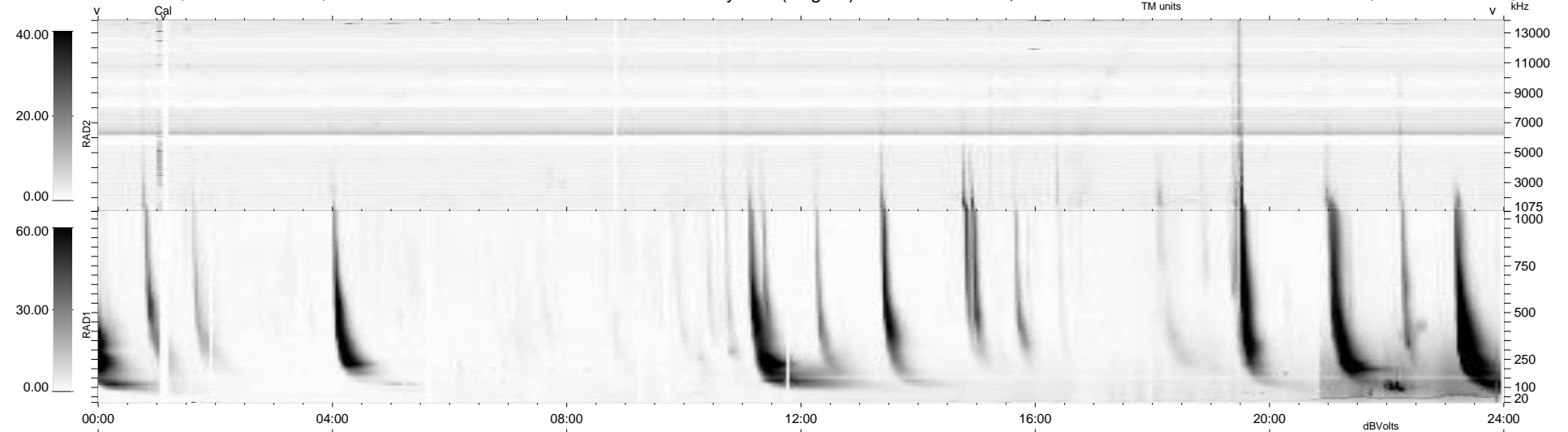
21 bad + 918 good MF/939MF projected (97%) - 0 missing MFs  
 Avg interval = 180 secs  
 Re = -254.04 (242.63, -72.94, 18.66 GSE)

windlib 2.0b

LZ version = v01

### WIND/WAVES Summary Plot (Page 1) for 23-NOV-2012, DOY = 328

DAILY 2012-11-24 19:46:06  
 Re = 253.49 (241.37, -75.25, 18.23 GSE)



RAD2 Antenna Ey .....  
 Mode LIN(1) .....  
 SUM/SEP SEP .....  
 Toggle OFF .....  
 RAD1 Antenna Ex .....  
 Mode LIS(2,4) .....  
 SUM/SEP SUM .....  
 Toggle OFF .....  
 TNR Antenna ExEy .....  
 Mode A-32 .....  
 Sweep ACE .....