

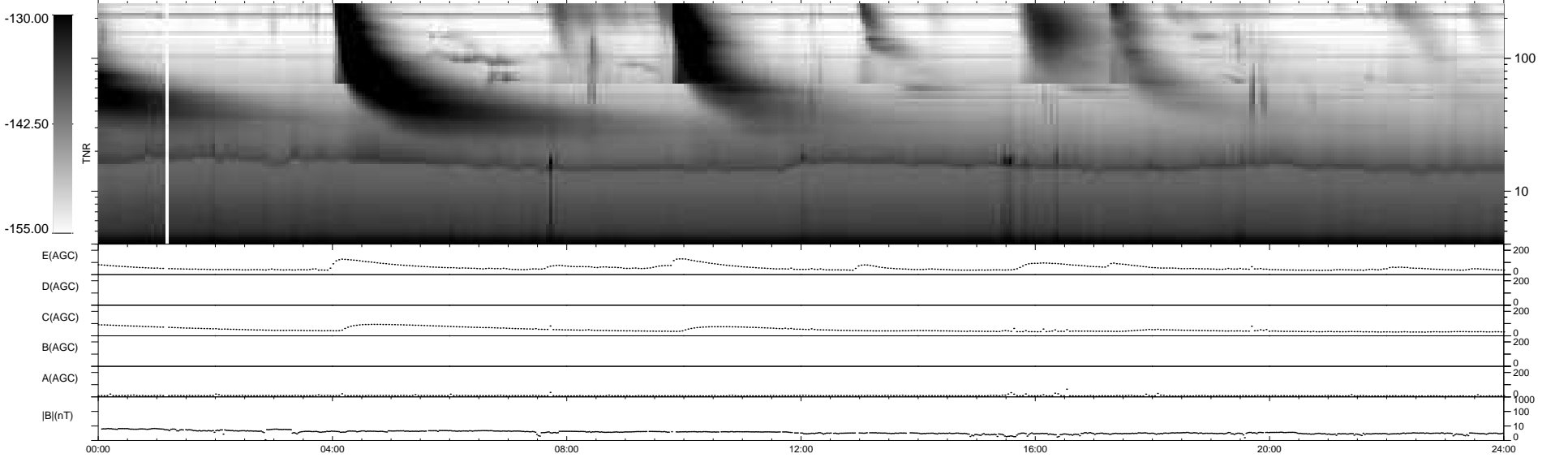
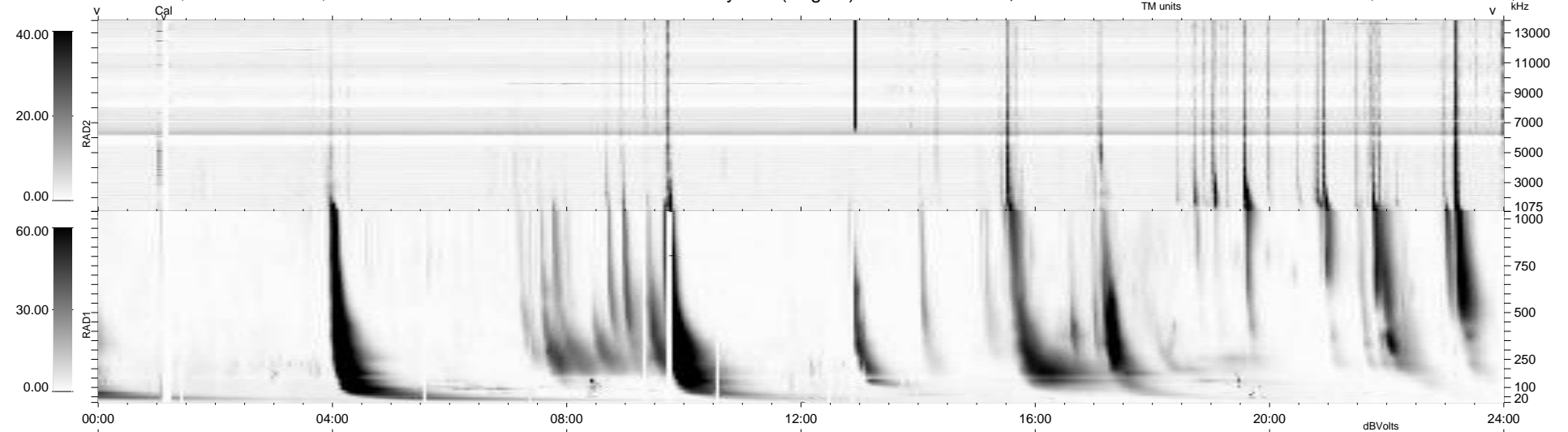
20 bad + 919 good MF/939MF projected (97%) - 0 missing MFs  
 Avg interval = 180 secs  
 Re = 255.15 (245.13, -68.10, 19.45 GSE)

windlib 2.0b

LZ version = v01

### WIND/WAVES Summary Plot (Page 1) for 21-NOV-2012, DOY = 326

DAILY 2012-11-22 18:46:08  
 Re = 254.60 (243.90, -70.53, 19.07 GSE)



```

RAD2
Antenna Ey .....
Mode LIN(1) .....
SUM/SEP SEP .....
Toggle OFF .....

RAD1
Antenna Ex .....
Mode LIS(2,4) .....
SUM/SEP SUM .....
Toggle OFF .....

TNR
Antenna ExEy .....
Mode A-32 .....
Sweep ACE .....
  
```