

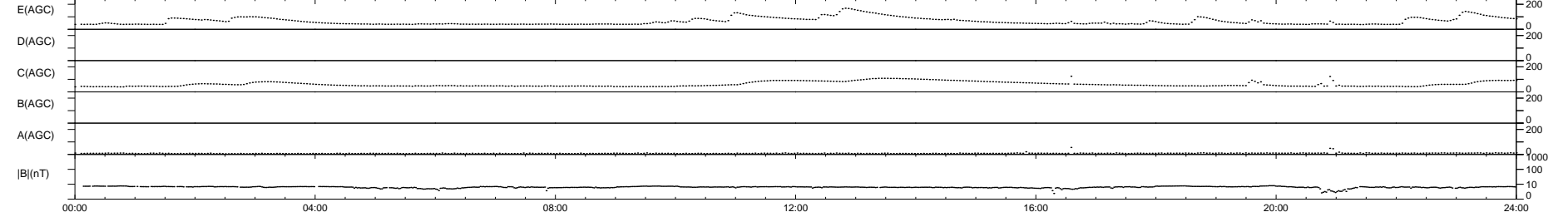
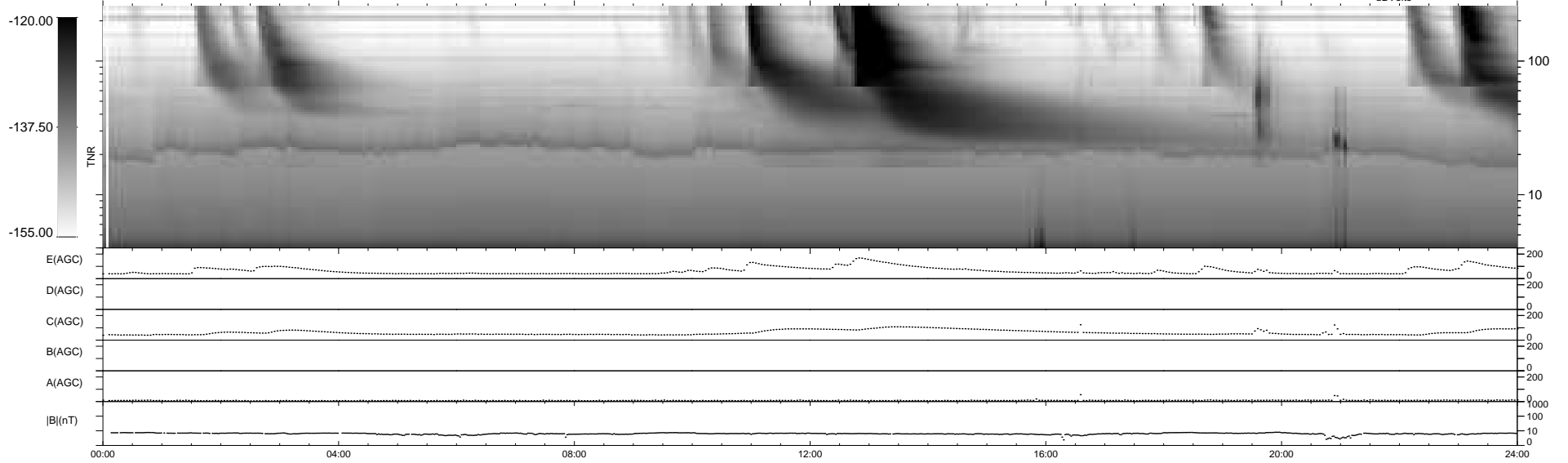
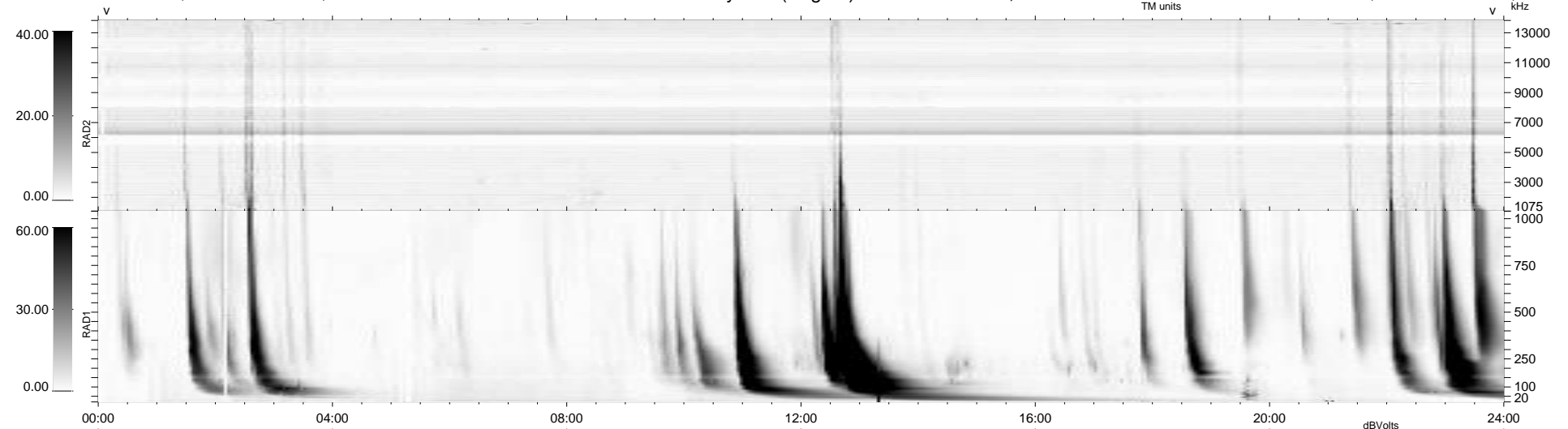
20 bad + 919 good MF/939MF projected (97%) - 0 missing MFs  
 Avg interval = 180 secs  
 Re = 255.69 (246.33, -65.62, 19.80 GSE)

windlib 2.0b

LZ version = v02

### WIND/WAVES Summary Plot (Page 1) for 20-NOV-2012, DOY = 325

DAILY 2012-11-26 15:46:08  
 Re = 255.16 (245.14, -68.08, 19.45 GSE)



RAD2  
 Antenna Ey  
 Mode LIN(1)  
 SUM/SEP SEP  
 Toggle OFF

RAD1  
 Antenna  
 Mode  
 SUM/SEP  
 Toggle

TNR  
 Antenna ExEy  
 Mode A-32  
 Sweep ACE