

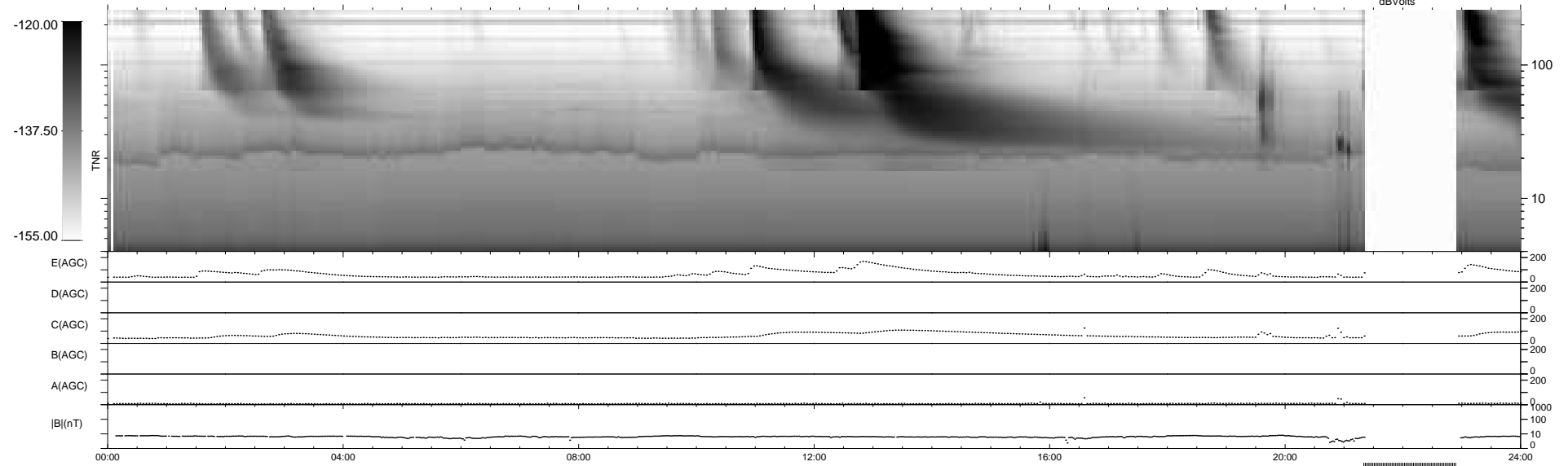
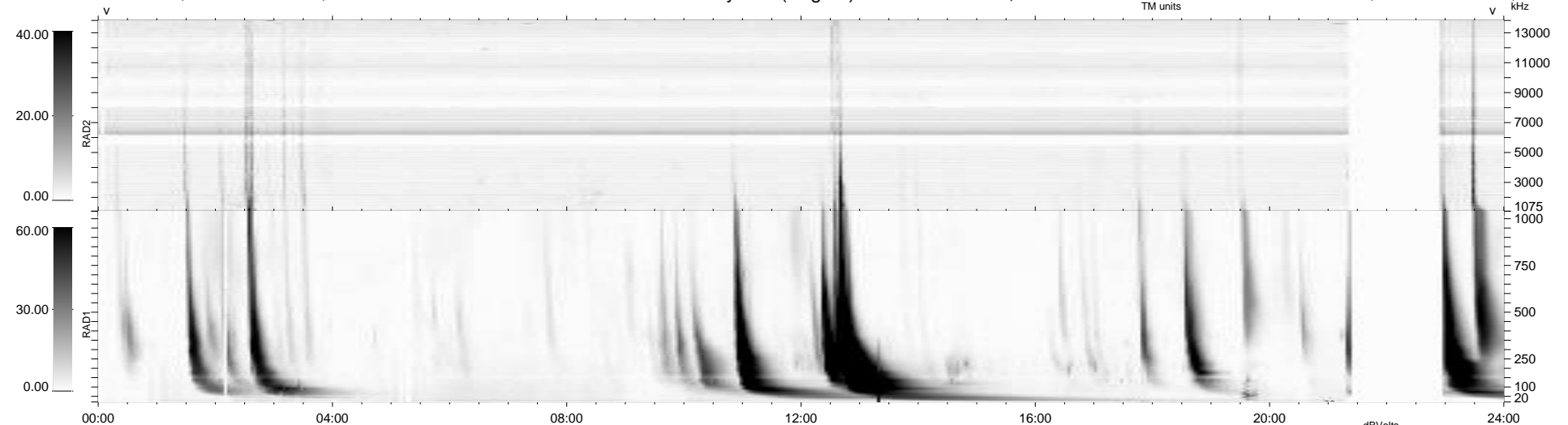
19 bad + 858 good MF/939MF projected (91%) - 62 missing MFs
 Avg interval = 180 secs
 Re = 255.69 (246.33, -65.62, 19.80 GSE)

windlib 2.0b

LZ version = v01

WIND/WAVES Summary Plot (Page 1) for 20-NOV-2012, DOY = 325

DAILY 2012-11-21 17:46:06
 Re = 255.16 (245.14, -68.08, 19.45 GSE)



RAD2
 Antenna Ey
 Mode LIN(1)
 SUM/SEP SEP
 Toggle OFF
 RAD1
 Antenna
 Mode
 SUM/SEP
 Toggle
 TNR
 Antenna ExEy
 Mode A-32
 Sweep ACE